



# PERFORMANCE REPORT

## 2025-2026 SEASON



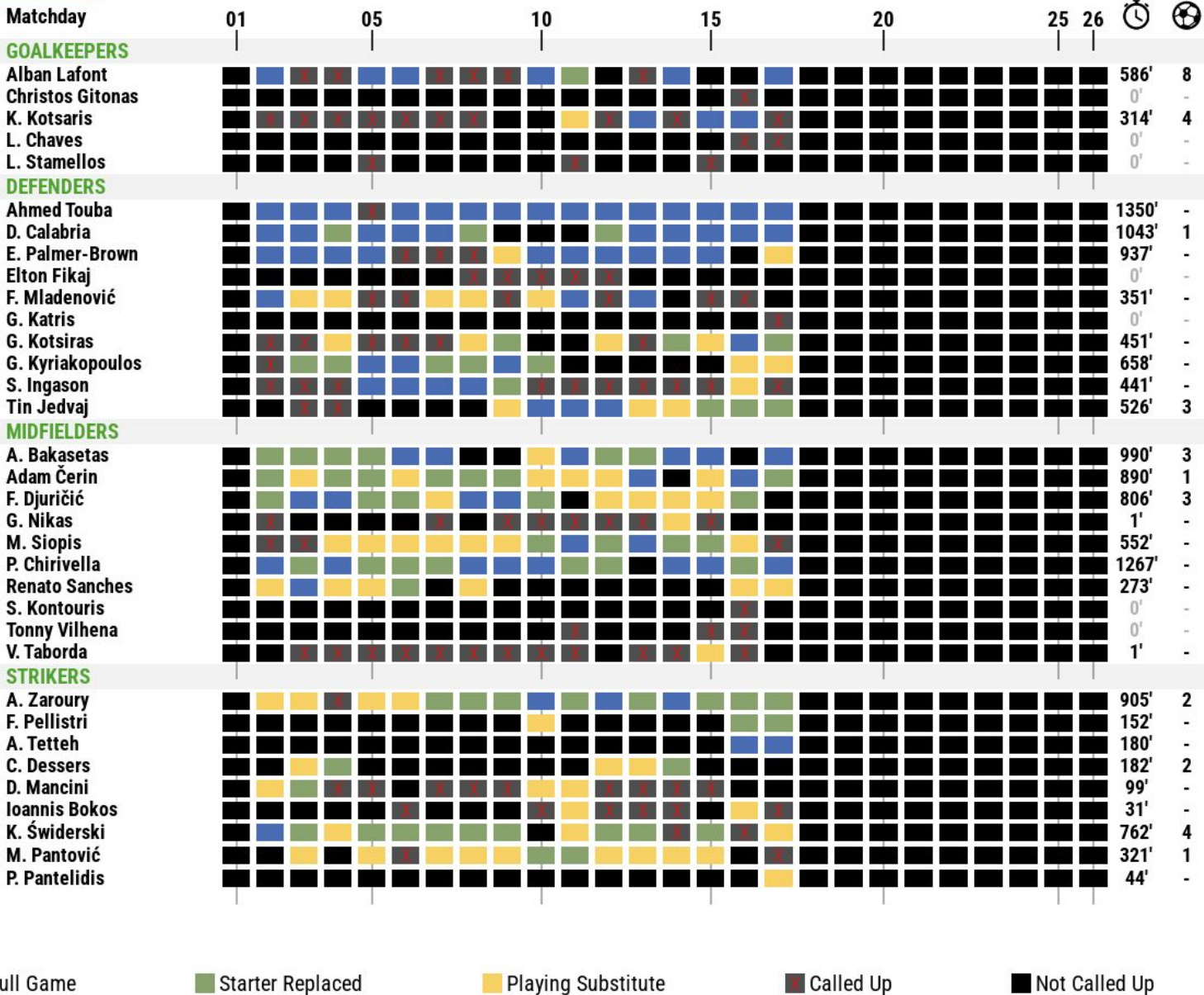
# SQUAD ANALYSIS

## EVOLUTION PER MATCHDAY



# PANATHINAIKOS

25/26 season



█ Full Game     
 █ Starter Replaced     
 █ Playing Substitute     
 █ Called Up     
 █ Not Called Up



# SQUAD ANALYSIS

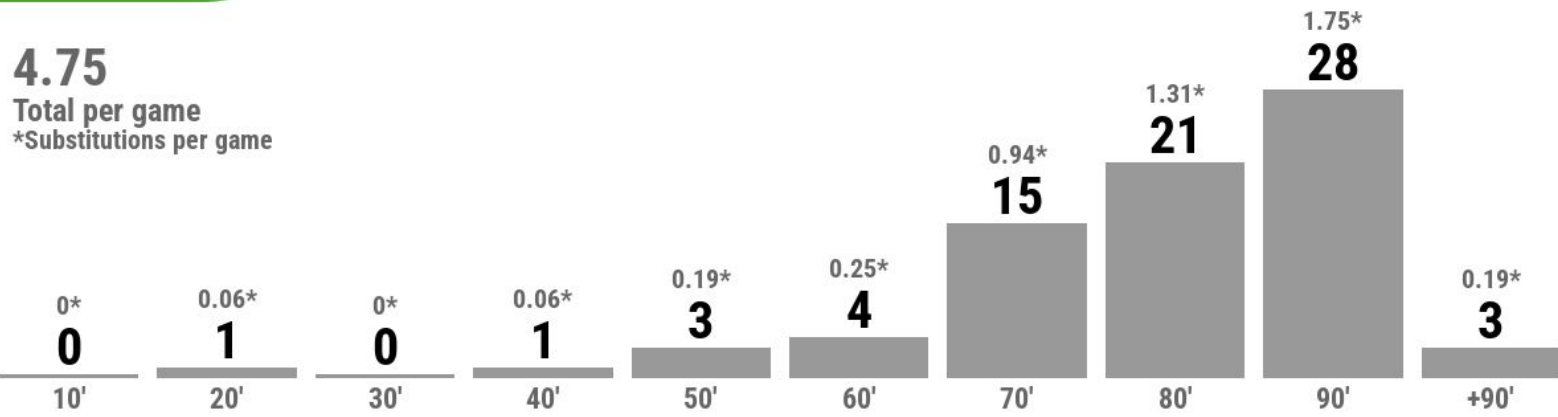
## SUBSTITUTION ANALYSIS



# PANATHINAIKOS

25/26 season

**4.75**  
Total per game  
\*Substitutions per game



FW 30    MID 30    DF 15    GK 1    GK 1    DF 17    MID 28    FW 30

### SUBSTITUTES

### REPLACEMENTS



Super League Griega

\*Top 15 are shown

█ Starter Replaced   
 █ Injured   
 █ Substitutes who came on



# PANATHINAIKOS

25/26 season

## X-RAY

### PLAYERS

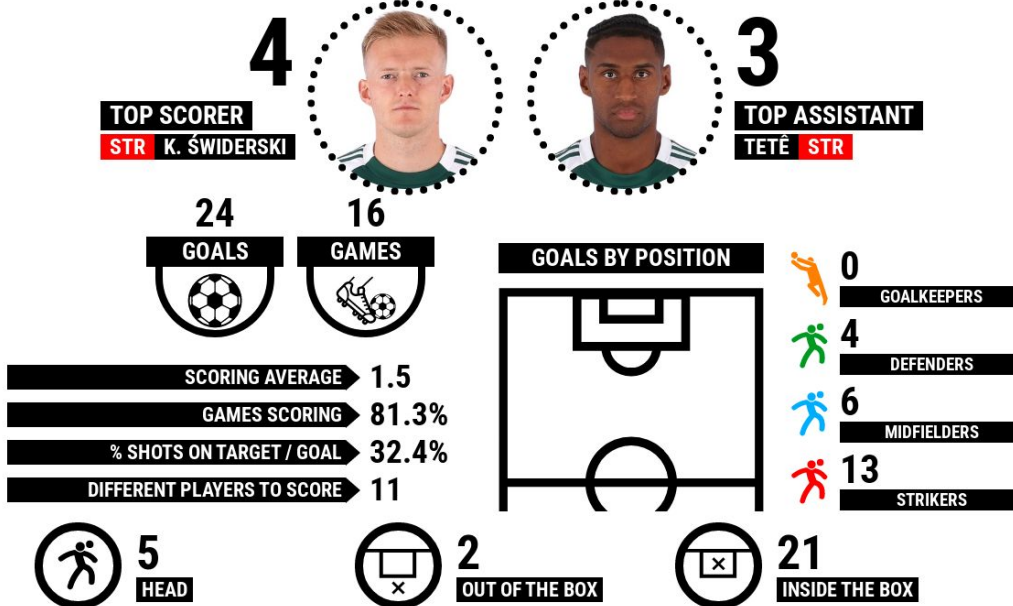
- + GOALS**  
K. Świdorski **4**
- + PENALTY GOALS**  
K. Świdorski  
Drawn with: A. Bakasetas **2**
- + FOULS WON**  
M. Siopis **20**
- + SUCC. DRIBBLES**  
Tetê **38**
- + AERIAL DUELS WON**  
Ahmed Touba **36**

- + GAMES PLAYED**  
Adam Ćerin  
Drawn with: Ahmed Touba and 2 more **15**
- + SUBSTITUTE APPEARANCES**  
M. Pantović **9**
- + DUELS WON**  
Ahmed Touba **115**
- + KEY PASSES**  
A. Zaroury  
Drawn with: Tetê **7**
- + INTERCEPTIONS**  
D. Calabria **65**

### OVERALL PERFORMANCE

|                |    |
|----------------|----|
| Games Played   | 16 |
| Won            | 7  |
| Drawn          | 4  |
| Lost           | 5  |
| Goals for      | 24 |
| Goals Conceded | 21 |
| Clean Sheets   | 4  |
| Scores a goal  | 13 |

## TYPE OF GOAL





# OVERALL ANALYSIS

## PERFORMANCE vs TOP10 LEAGUE



### POINTS EARNED AGAINST TOP-10 TEAMS

\* Average Points at Home & Away

(1°) 30/36 Pts.



(2°) 28/36 Pts.



(3°) 27/36 Pts.



(4°) 15/30 Pts.



(7°) 13/33 Pts.



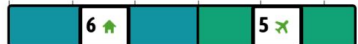
(8°) 11/30 Pts.



(5°) 12/33 Pts.



(12°) 11/39 Pts.



(9°) 10/36 Pts.



(6°) 10/36 Pts.



(13°) 9/42 Pts.



(11°) 8/42 Pts.



(14°) 5/42 Pts.



(10°) 3/30 Pts.



Points Earned



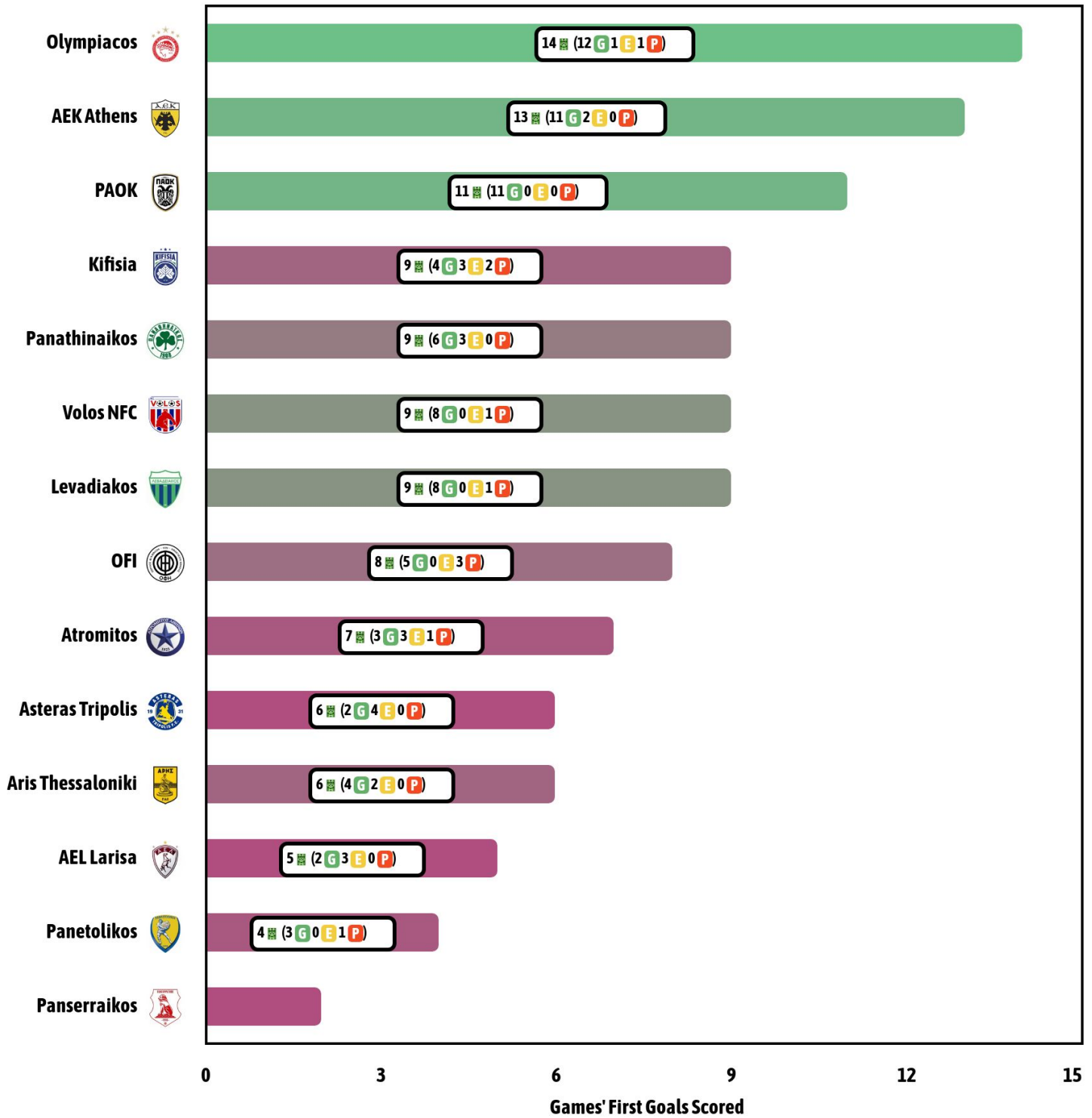
# OVERALL ANALYSIS

## PERFORMANCE AFTER FIRST GOAL



### HOW DOES WINNING AFFECT PERFORMANCE?

Full-Time Results When Scoring the First Goal of the Game



PANATHINAIKOS

# DEFENSIVE ANALYSIS



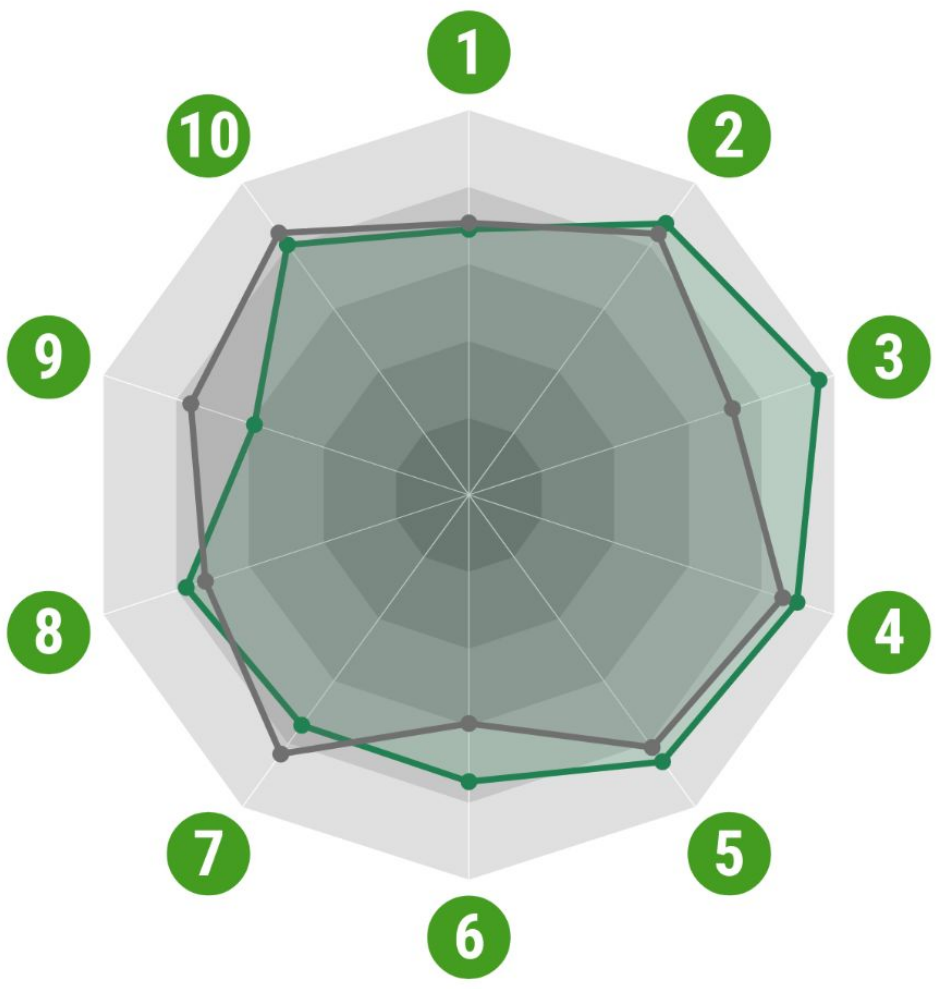


# CONTEXTUAL COMPARISON DEFENSIVE STATS



## Panathinaikos

25/26 season



|                             | 1            | 2            | 3           | 4            | 5           | 6            | 7            | 8            | 9            | 10           |
|-----------------------------|--------------|--------------|-------------|--------------|-------------|--------------|--------------|--------------|--------------|--------------|
| Aerial Duels Won            | 14.5 (7°)    |              |             |              |             |              |              |              |              |              |
| Defensive Duels Won         |              | 30.75 (4°)   |             |              |             |              |              |              |              |              |
| Succ. Defensive 1v1s        |              |              | 3.44 (3°)   |              |             |              |              |              |              |              |
| Duels Won                   |              |              |             | 79.31 (3°)   |             |              |              |              |              |              |
| Recoveries                  |              |              |             |              | 78.06 (3°)  |              |              |              |              |              |
| Opp. Half Recoveries        |              |              |             |              |             | 29.63 (3°)   |              |              |              |              |
| Interceptions               |              |              |             |              |             |              | 32.44 (13°)  |              |              |              |
| Counter-Pressing Recoveries |              |              |             |              |             |              |              | 37.81 (5°)   |              |              |
| Clearances                  |              |              |             |              |             |              |              |              | 11.56 (12°)  |              |
| Fouls                       |              |              |             |              |             |              |              |              |              | 14.75 (8°)   |
| <b>Average</b>              | <b>14.85</b> | <b>29.57</b> | <b>2.59</b> | <b>75.88</b> | <b>73.9</b> | <b>23.62</b> | <b>36.49</b> | <b>35.26</b> | <b>14.99</b> | <b>14.28</b> |

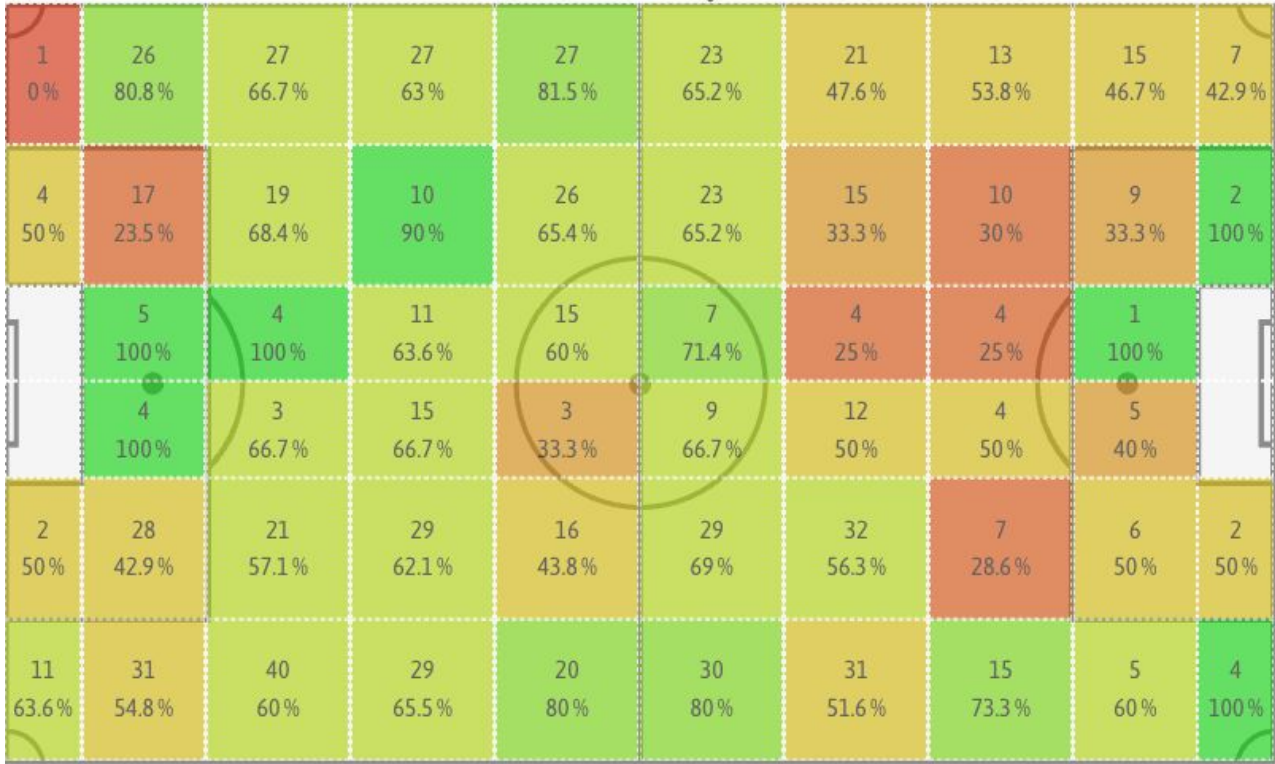
\* Greek Super League  
Comparison with the average of the teams of the selected competition



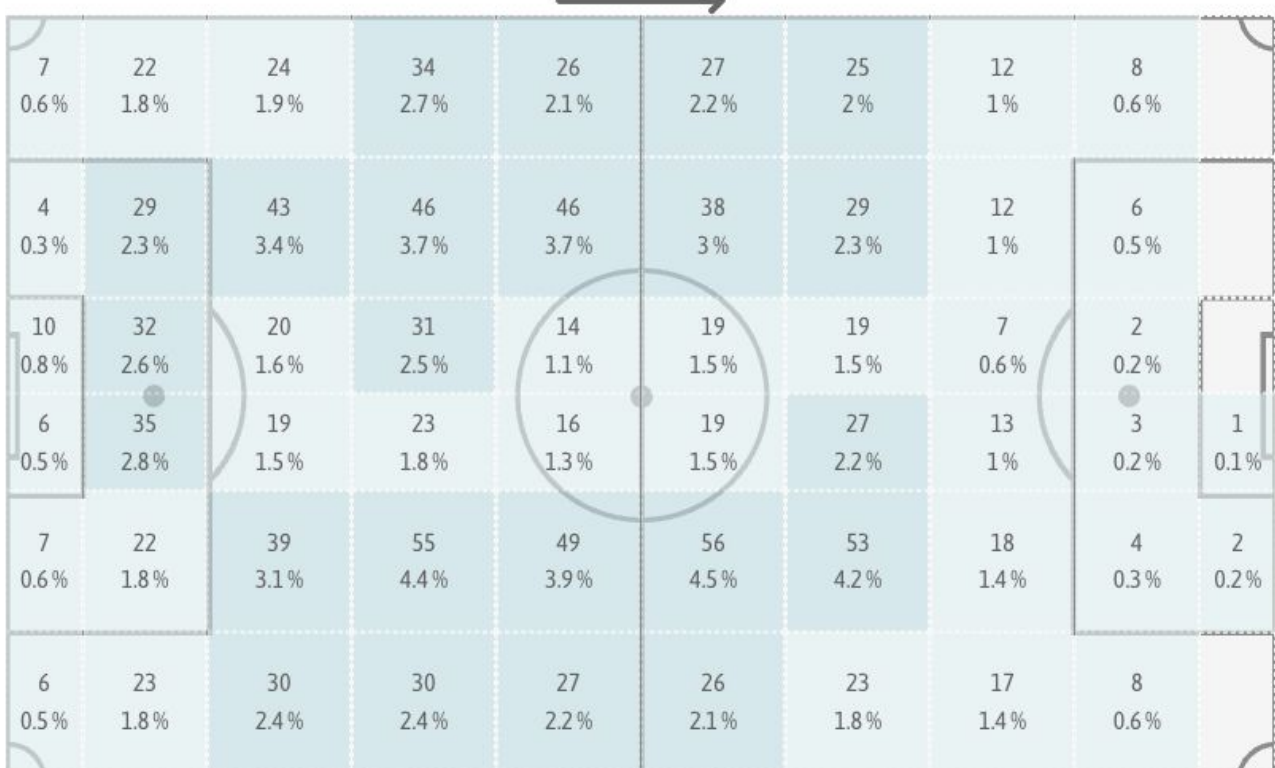
# Defensive KPIs

## Greek Super League 2025-2026

### % Defensive Duels Won



### Recoveries





# DEFENSIVE DUELS

Defensive Duels Won



12.65%  
31

D. Calabria



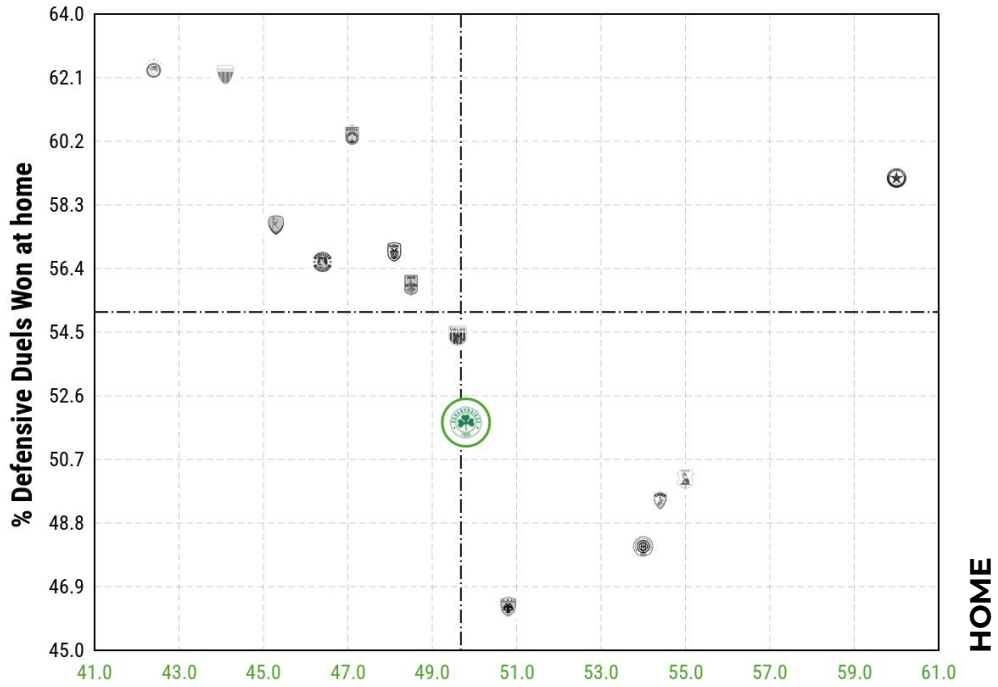
9.8%  
24

A. Zaroury



8.16%  
20

Ahmed Touba



Defensive Duels at home

Defensive Duels Won



10.93%  
27

D. Calabria



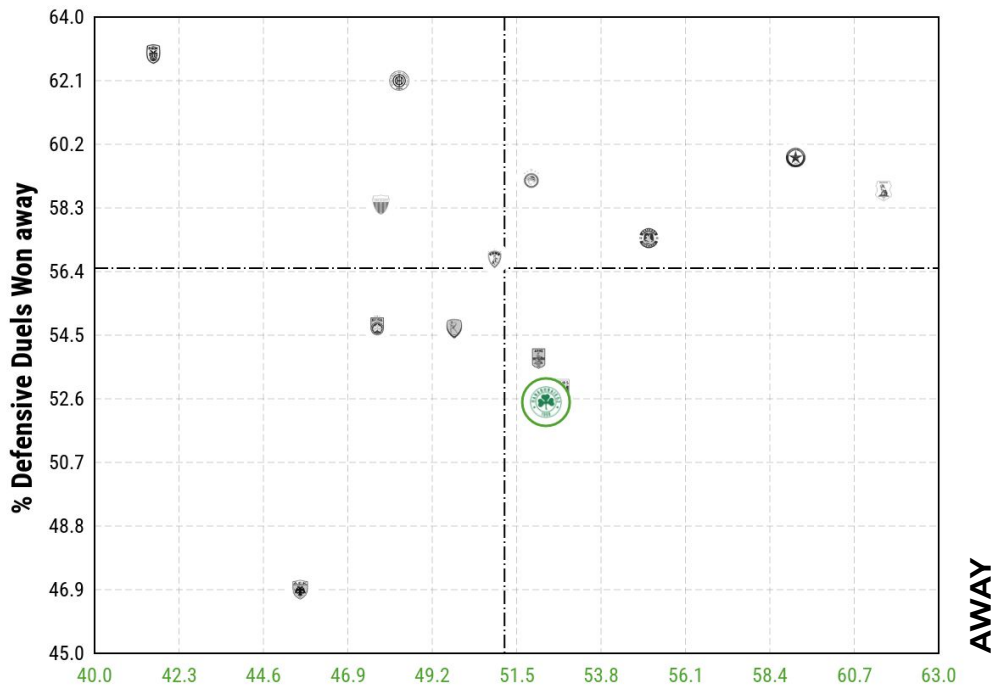
9.31%  
23

Adam Cerin



8.5%  
21

Ahmed Touba



Defensive Duels away



### AERIAL DUELS

Aerial Duels Won



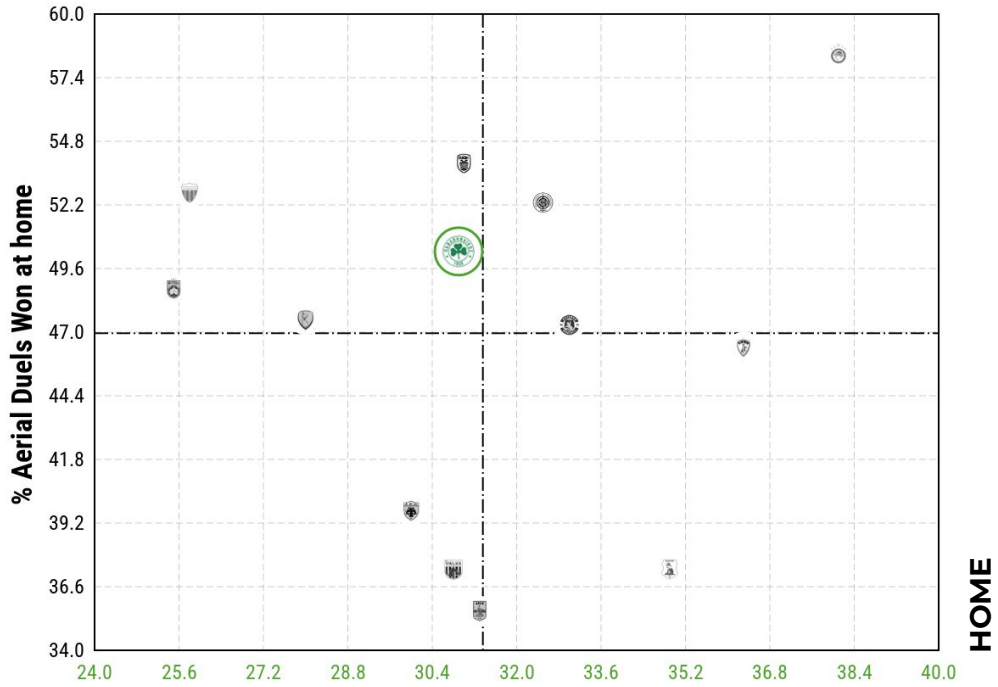
Ahmed Touba



P. Chirivella



E. Palmer-Brown



#### Aerial Duels at home

Aerial Duels Won



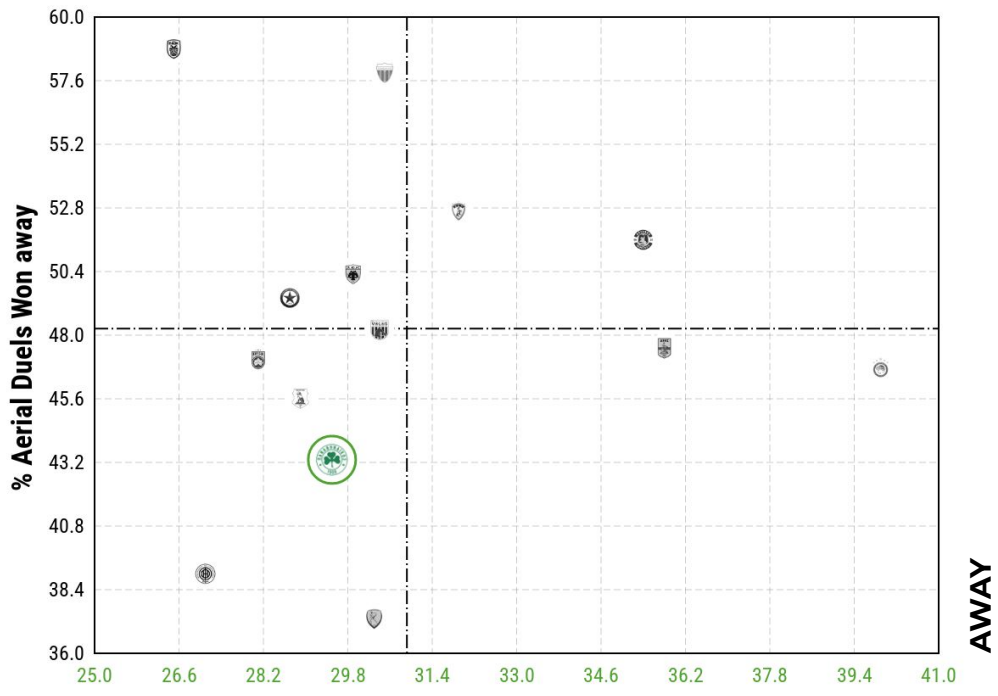
Ahmed Touba



Tin Jedvaj



Adam Ćerin



#### Aerial Duels away

The following report was developed on January 22nd 2026



# RECOVERIES

Opp. Half Recoveries



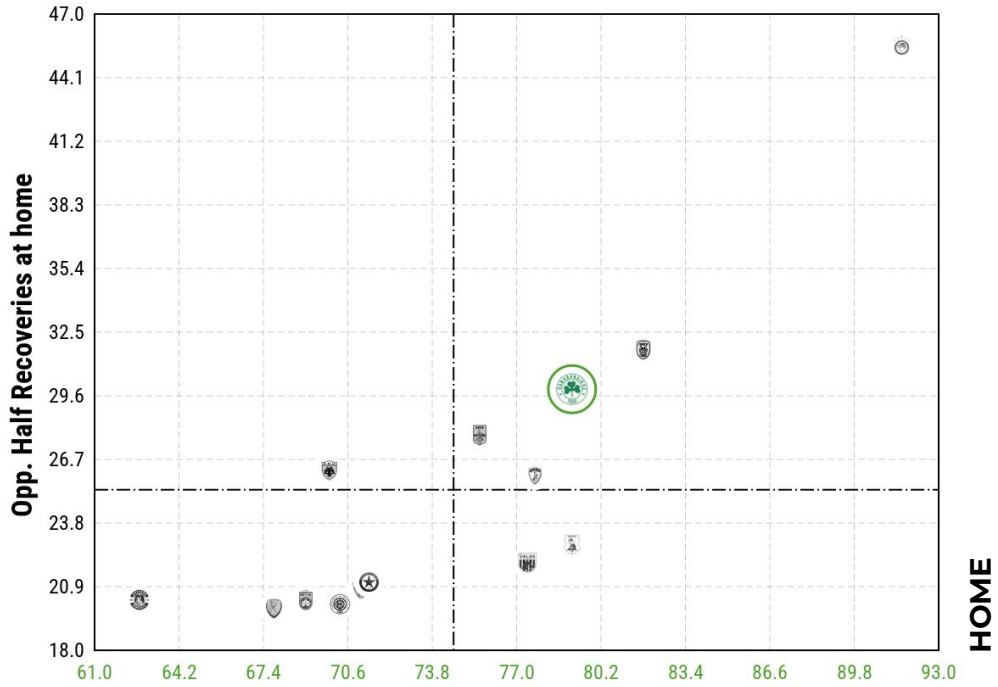
P. Chirivella



Adam Ćerin



D. Calabria



Recoveries at home

Opp. Half Recoveries



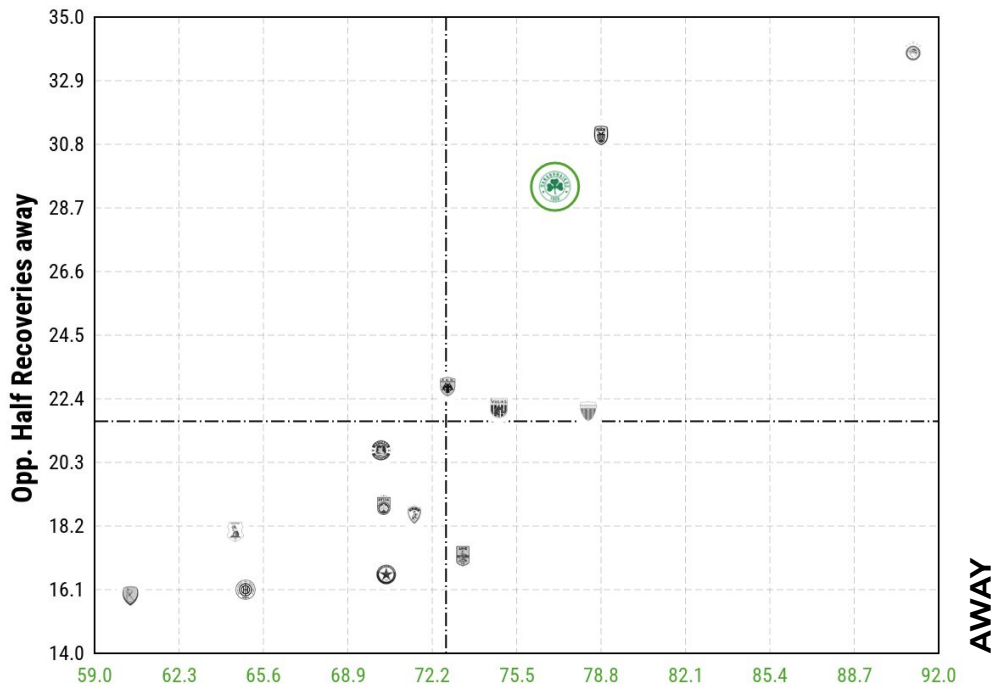
Adam Ćerin



P. Chirivella



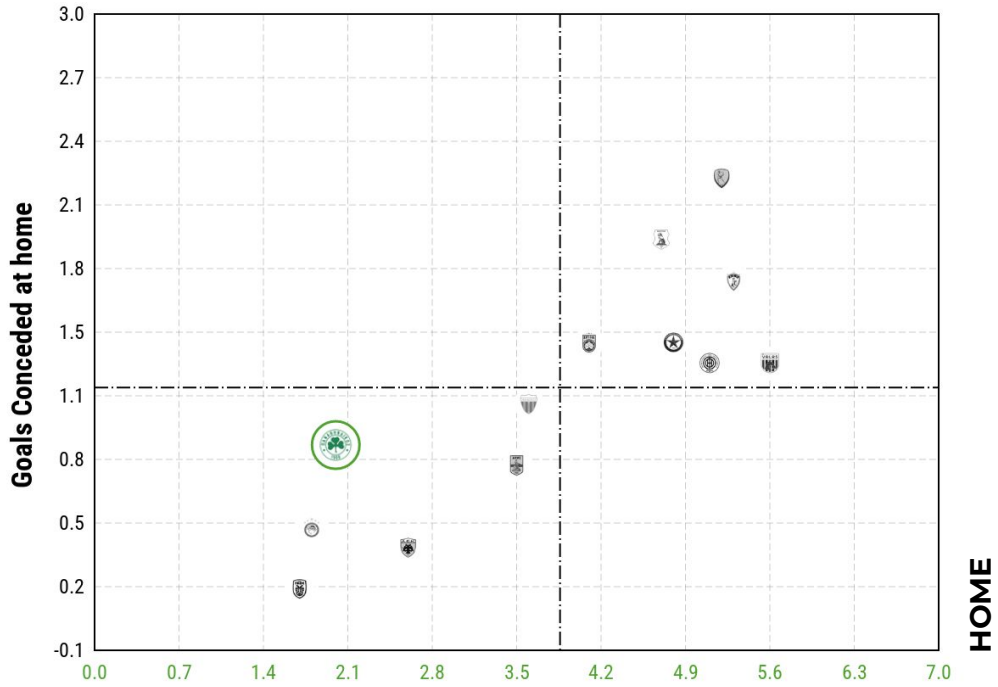
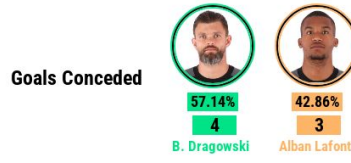
A. Bakasetas



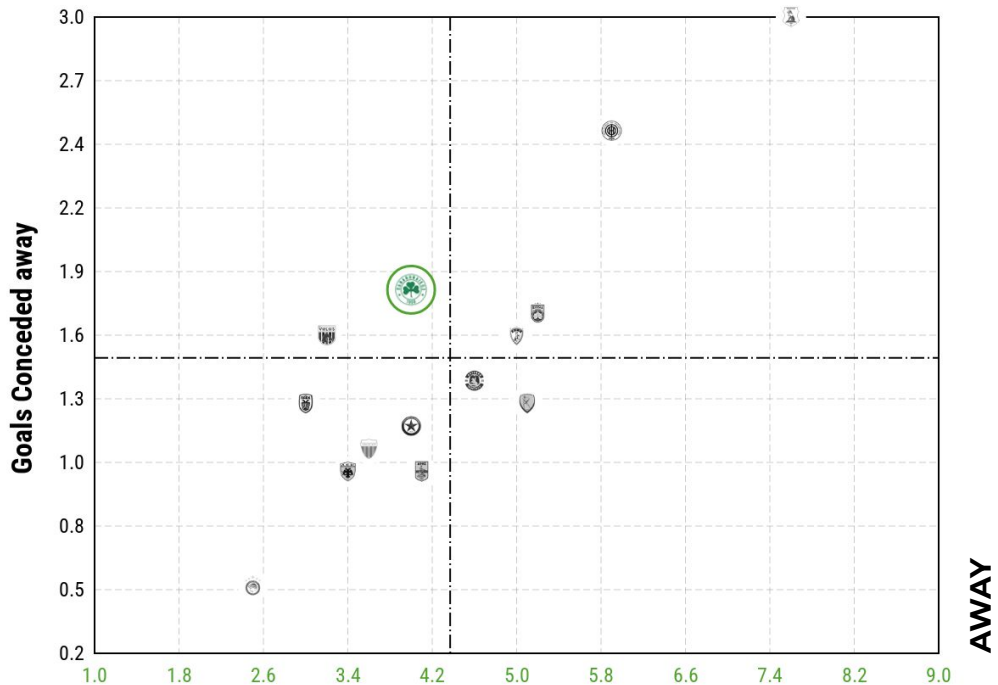
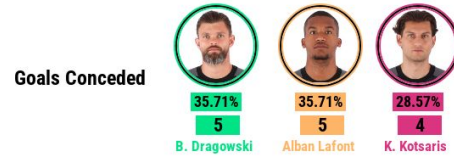
Recoveries away



### SHOTS FACED VS GOALS CONCEDED



Shots on Target Faced at home



Shots on Target Faced away

# PANATHINAIKOS DISTRIBUTION ANALYSIS



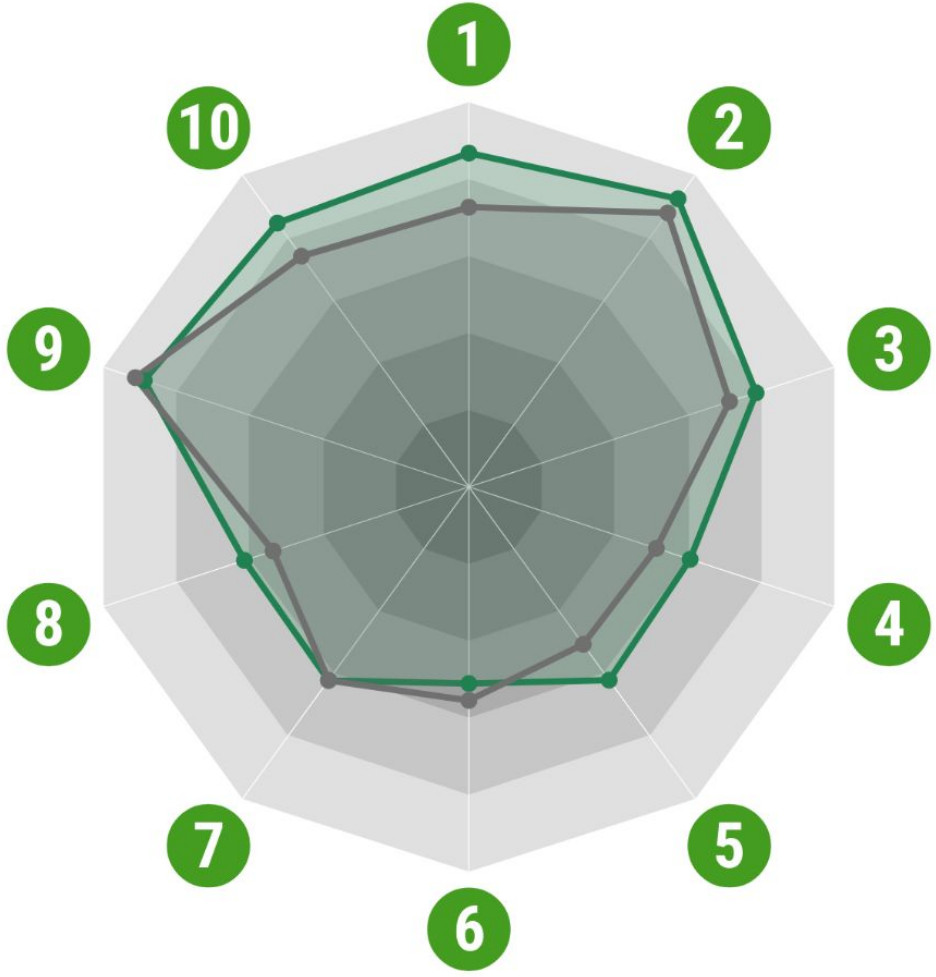


# CONTEXTUAL COMPARISON DISTRIBUTION STATS



## Panathinaikos

25/26 season



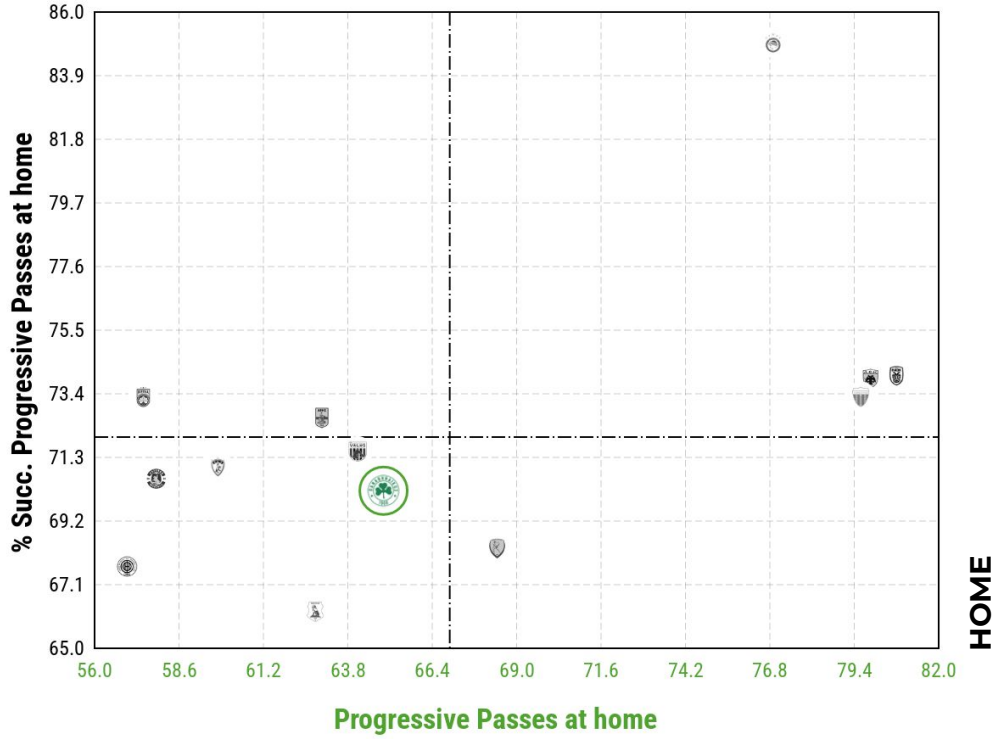
|         | 1            | 2                 | 3                        | 4                         | 5             | 6          | 7         | 8         | 9            | 10                       |
|---------|--------------|-------------------|--------------------------|---------------------------|---------------|------------|-----------|-----------|--------------|--------------------------|
|         | Succ. Passes | Succ. Long Passes | Succ. Progressive Passes | Succ. Passes into the Box | Succ. Crosses | Key Passes | xA        | Assists   | Dispossessed | Dispossessed in Own Half |
|         | 384.5 (5°)   | 24.44 (4°)        | 50.94 (5°)               | 10.63 (4°)                | 6 (3°)        | 2.56 (7°)  | 0.73 (5°) | 0.94 (5°) | 105.5 (10°)  | 30.75 (4°)               |
| Average | 322.2        | 23.24             | 46.25                    | 9.01                      | 4.89          | 2.78       | 0.73      | 0.82      | 103.11       | 35.91                    |

\* Greek Super League  
Comparison with the average of the teams of the selected competition

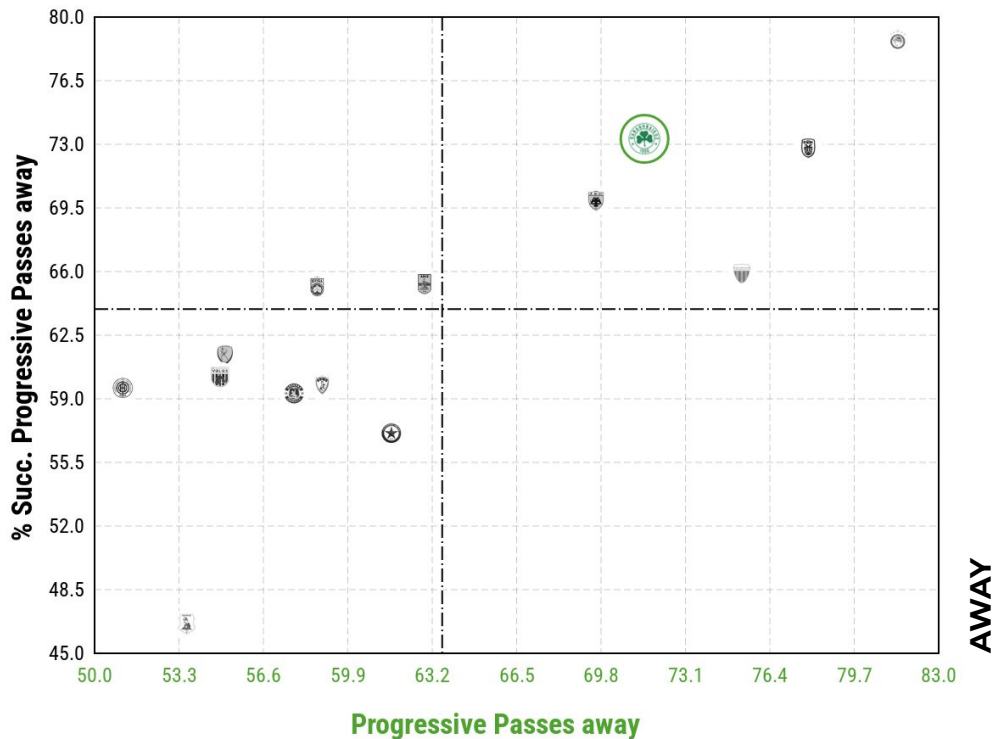
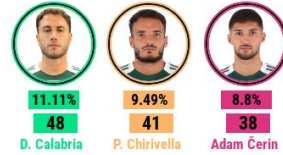


# PROGRESSIVE PASSES

Succ. Progressive Passes



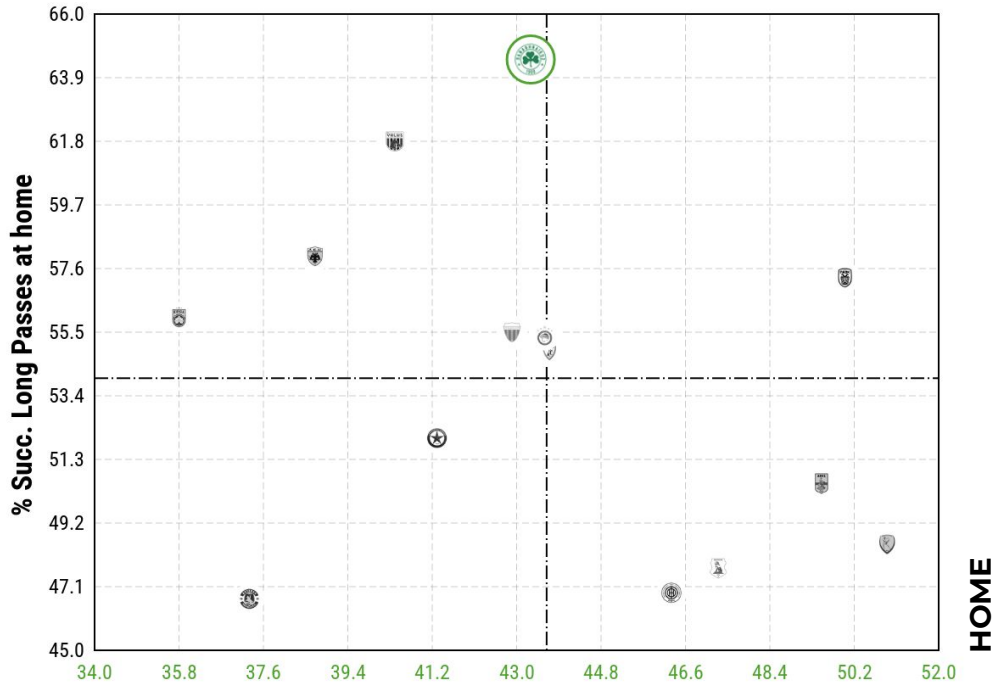
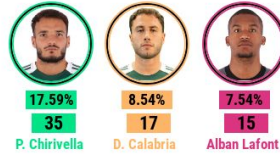
Succ. Progressive Passes





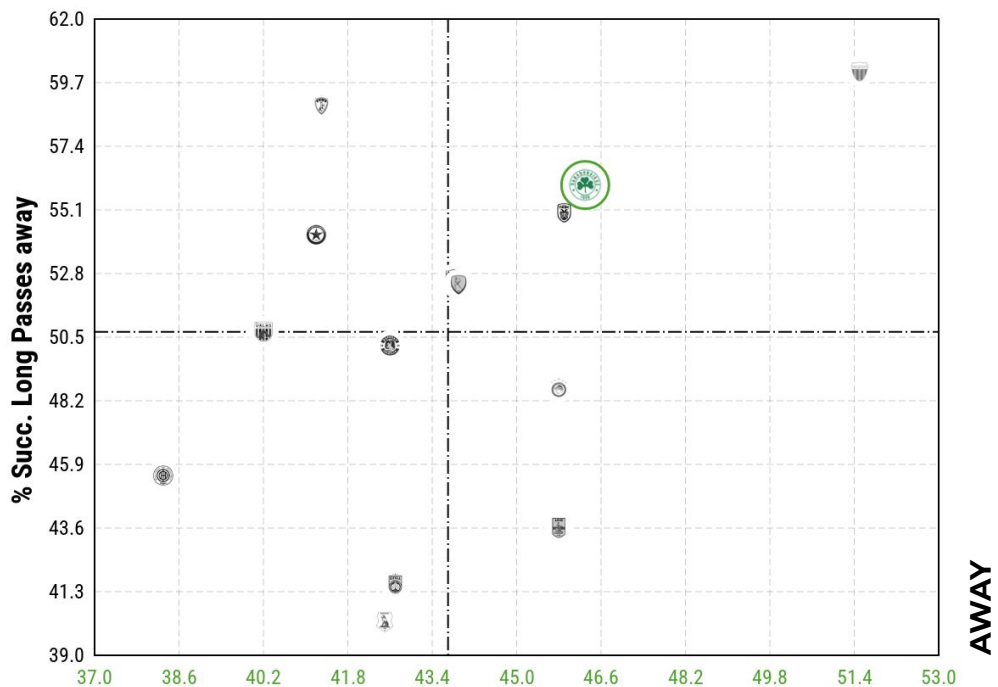
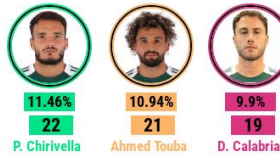
### LONG PASSES

Succ. Long Passes



### Long Passes at home

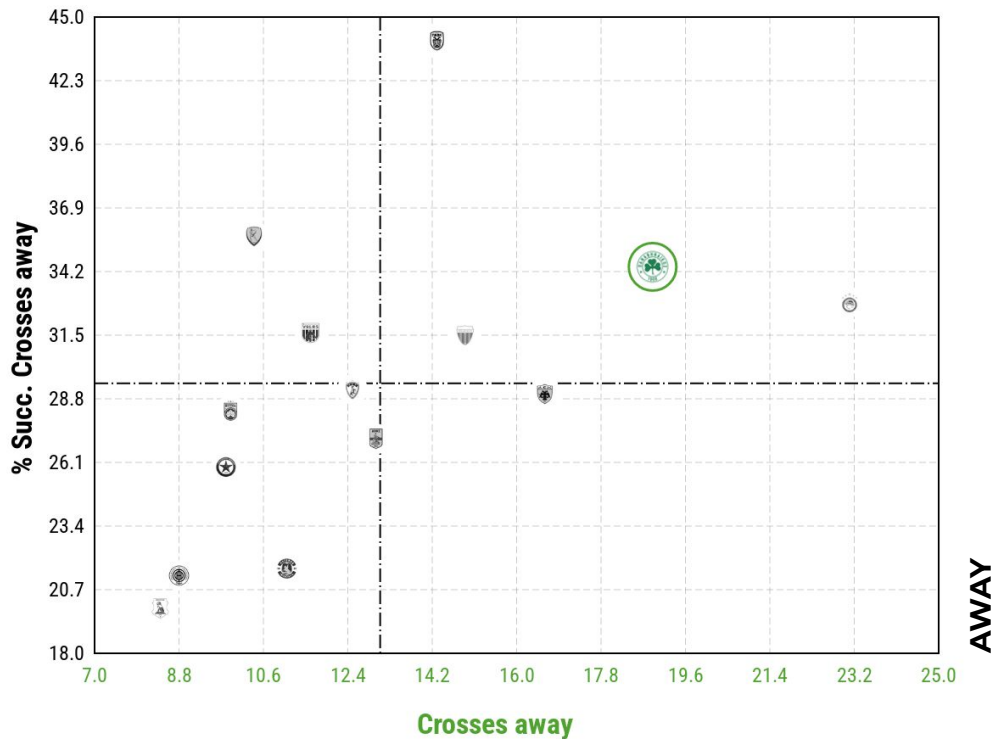
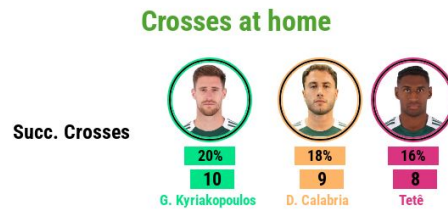
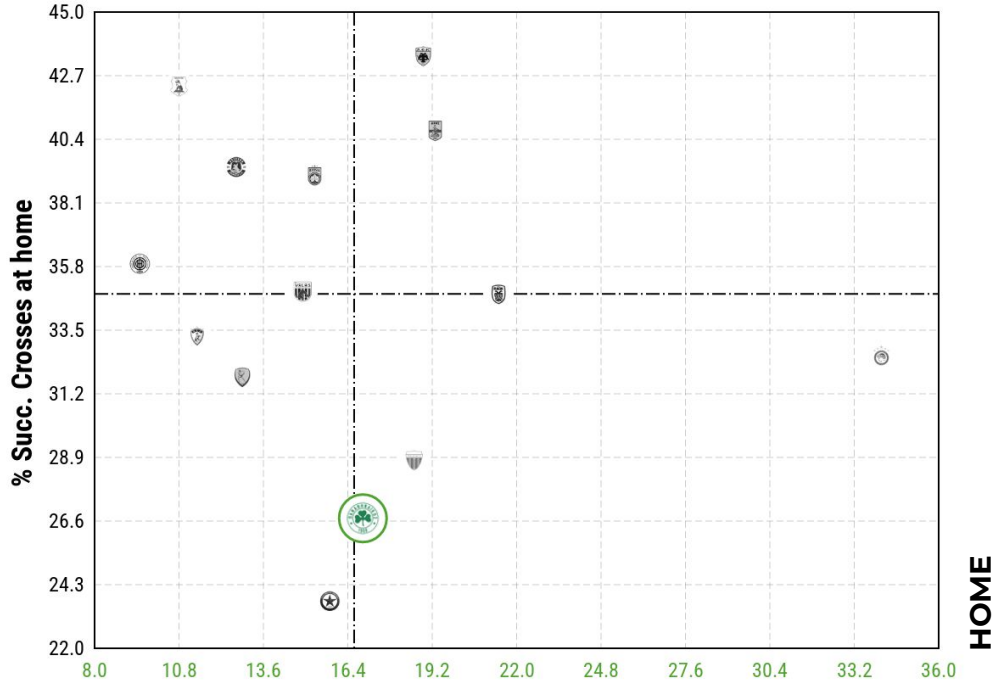
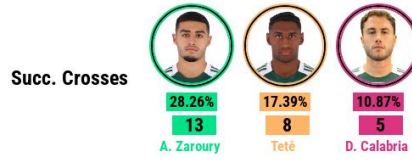
Succ. Long Passes



### Long Passes away



### CROSSES



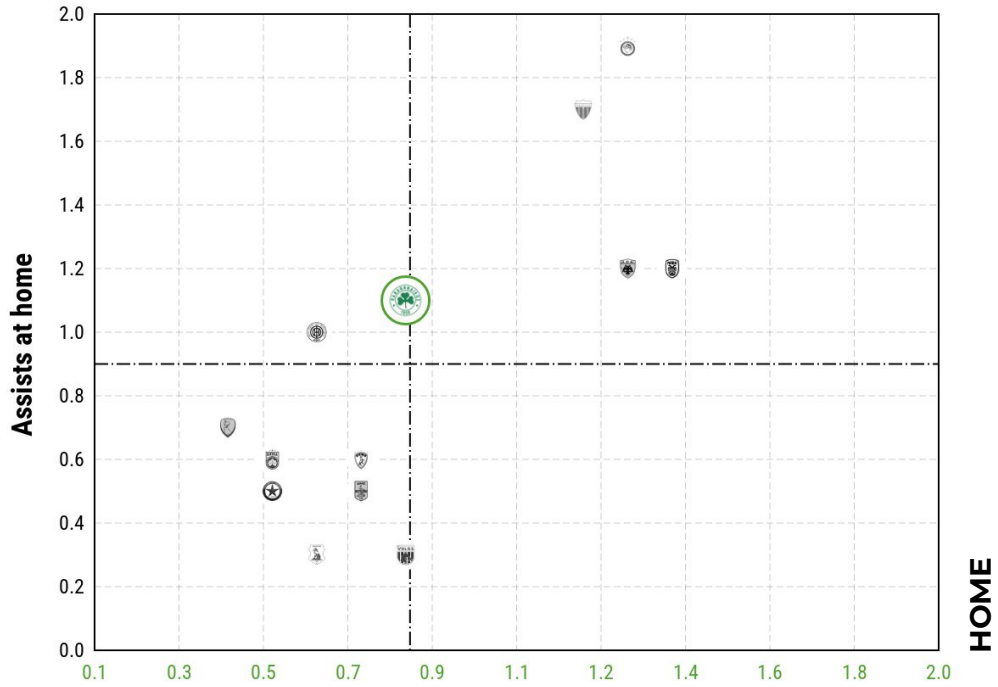
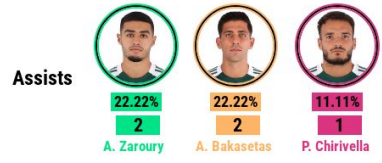


# DISTRIBUTION ANALYSIS

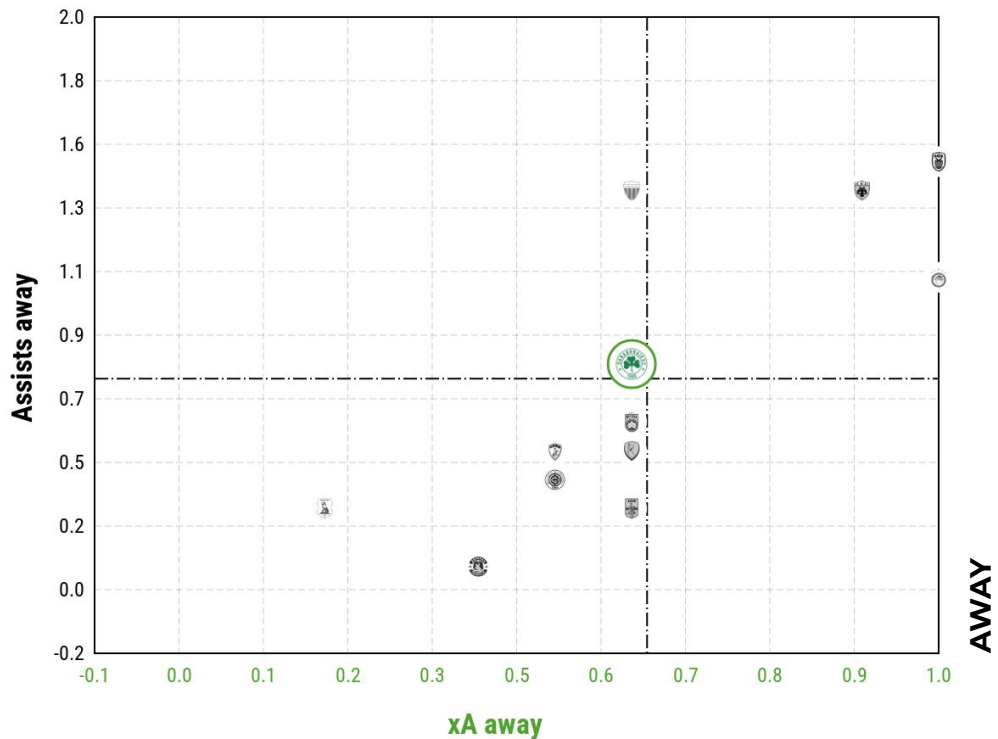
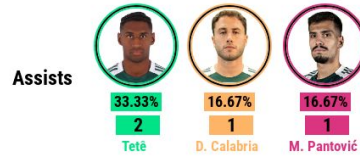
## GREEK SUPER LEAGUE 2025-2026



### xA VS ASSISTS



#### xA at home



PANATHINAIKOS

**OFFENSIVE  
ANALYSIS**



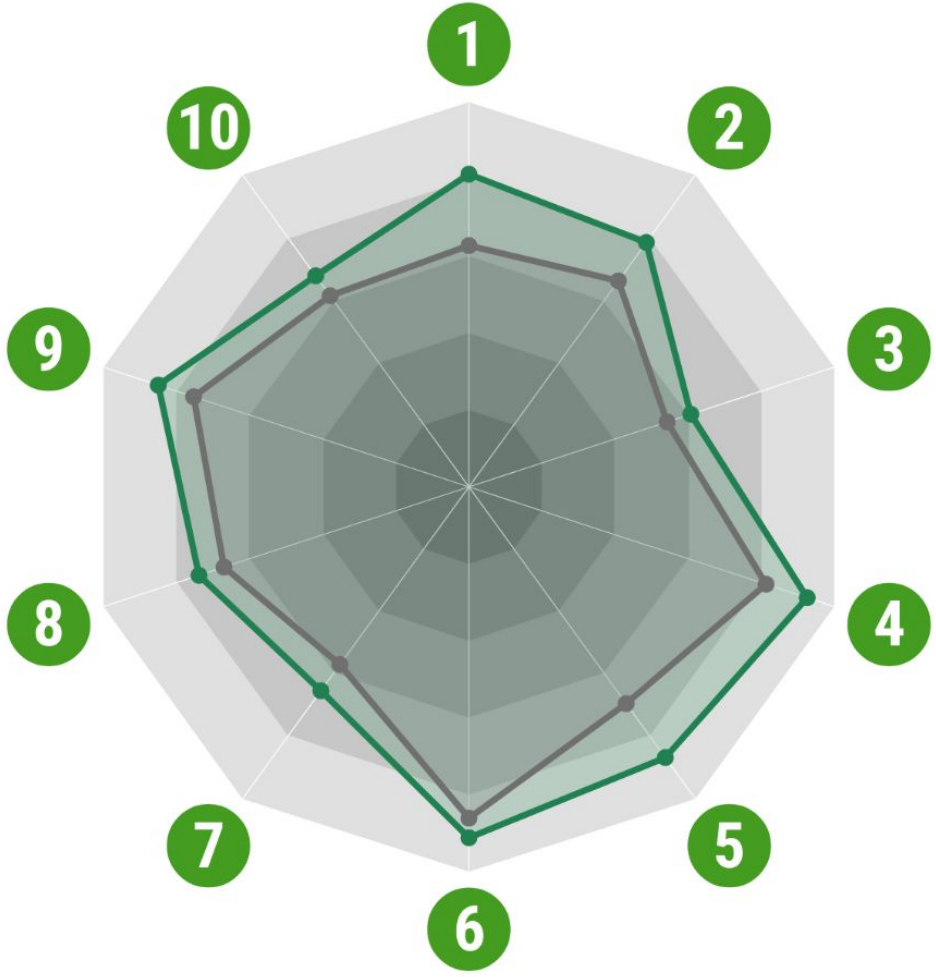


# CONTEXTUAL COMPARISON OFFENSIVE STATS



## Panathinaikos

25/26 season



|                        | 1                       | 2                      | 3                     | 4                       | 5                       | 6                       | 7                       | 8                       | 9                   | 10                     |
|------------------------|-------------------------|------------------------|-----------------------|-------------------------|-------------------------|-------------------------|-------------------------|-------------------------|---------------------|------------------------|
| Succ. Dribbles         | 11.69 (2 <sup>o</sup> ) |                        |                       |                         |                         |                         |                         |                         |                     |                        |
| xG                     |                         | 1.59 (5 <sup>o</sup> ) |                       |                         |                         |                         |                         |                         |                     |                        |
| Goals                  |                         |                        | 1.5 (5 <sup>o</sup> ) |                         |                         |                         |                         |                         |                     |                        |
| Offensive Duels Won    |                         |                        |                       | 25.75 (2 <sup>o</sup> ) |                         |                         |                         |                         |                     |                        |
| Succ. Progressive Runs |                         |                        |                       |                         | 16.75 (3 <sup>o</sup> ) |                         |                         |                         |                     |                        |
| Fouls Won              |                         |                        |                       |                         |                         | 14.19 (6 <sup>o</sup> ) |                         |                         |                     |                        |
| Touches in the Box     |                         |                        |                       |                         |                         |                         | 19.44 (5 <sup>o</sup> ) |                         |                     |                        |
| Shots                  |                         |                        |                       |                         |                         |                         |                         | 12.19 (5 <sup>o</sup> ) |                     |                        |
| Outs. the Box Shots    |                         |                        |                       |                         |                         |                         |                         |                         | 5 (4 <sup>o</sup> ) |                        |
| Shots in the Box       |                         |                        |                       |                         |                         |                         |                         |                         |                     | 7.19 (5 <sup>o</sup> ) |
| Average                | 9.02                    | 1.34                   | 1.34                  | 22.62                   | 13.41                   | 13.4                    | 16.94                   | 11.06                   | 4.43                | 6.51                   |

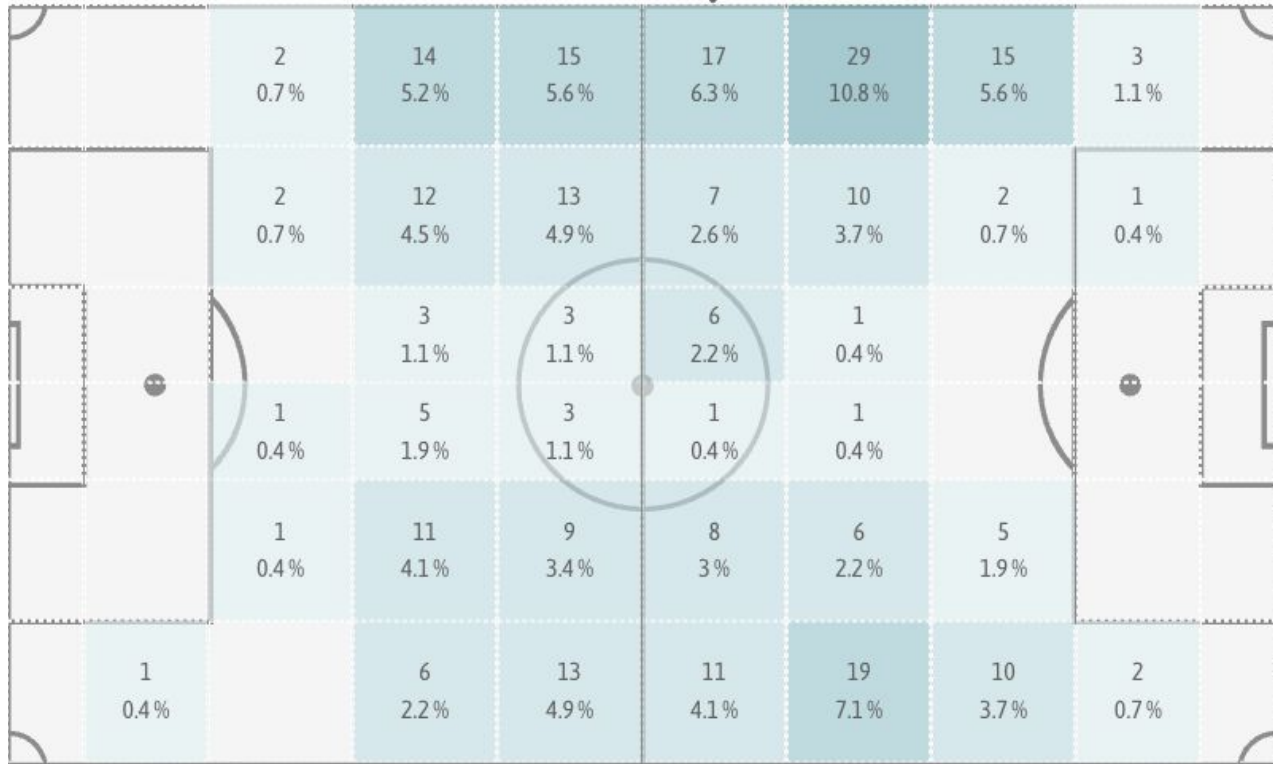
\* Greek Super League  
Comparison with the average of the teams of the selected competition



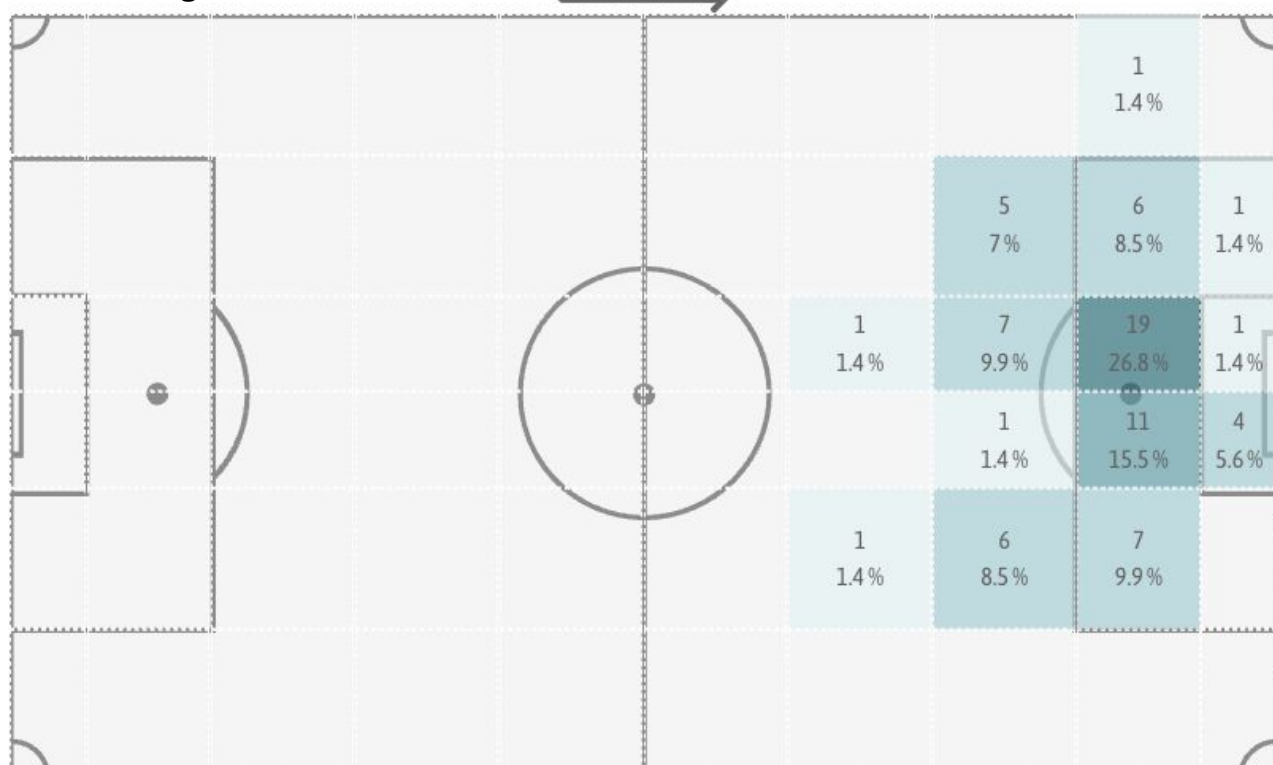
# Offensive KPIs

## Greek Super League 2025-2026

### Progressive runs

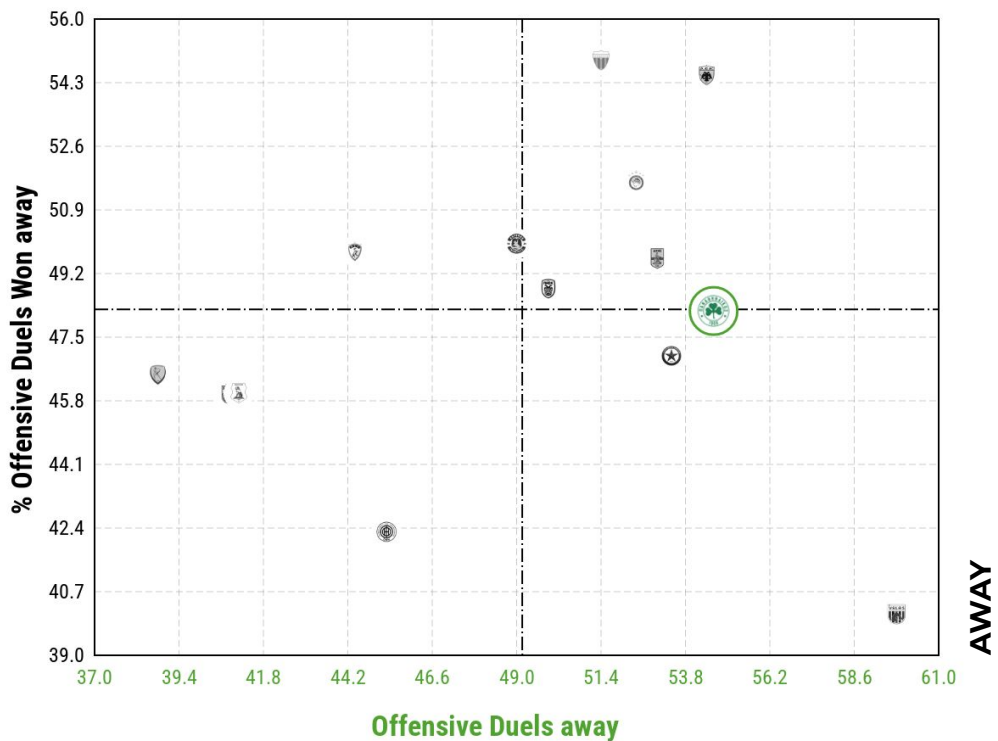
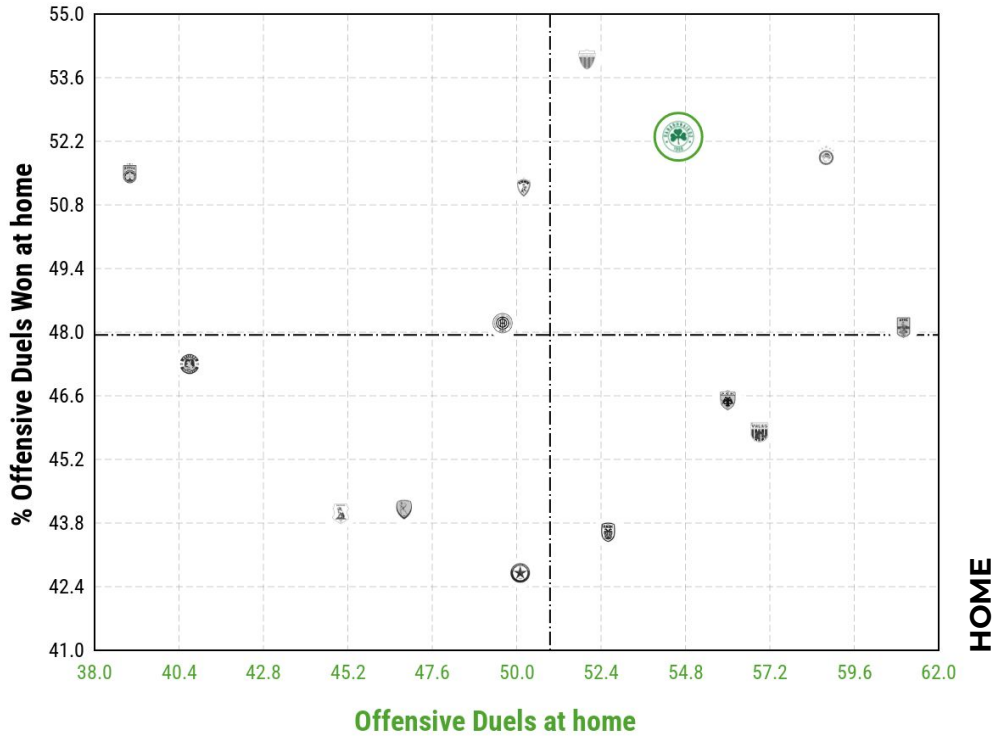
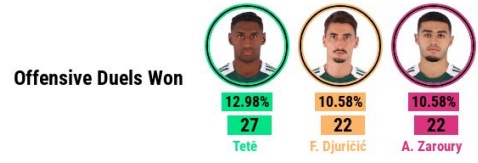


### Shots on Target





# OFFENSIVE DUELS

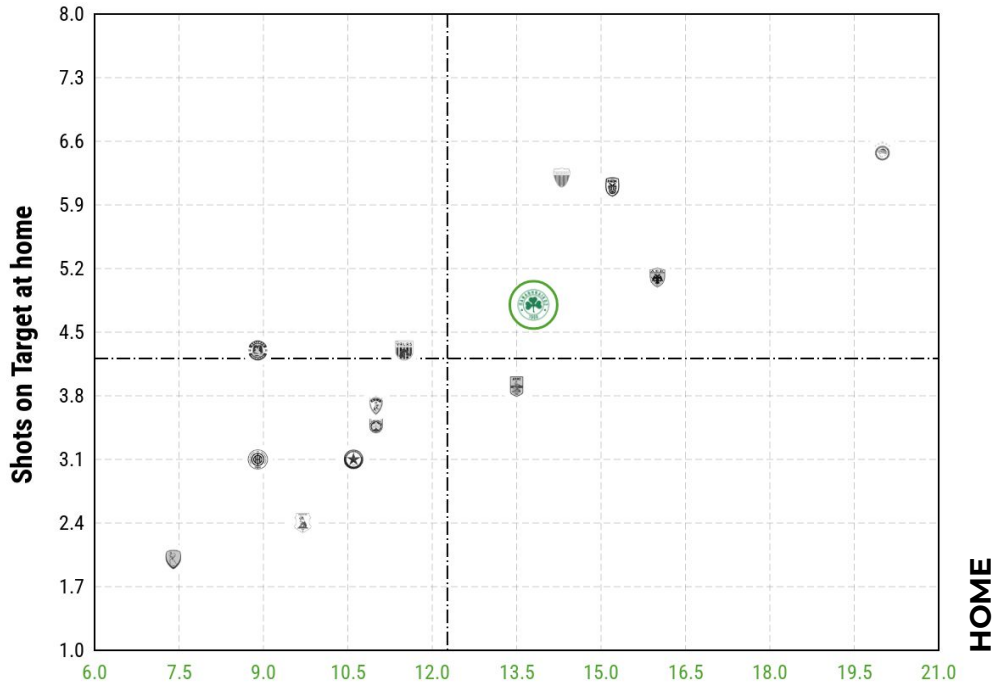
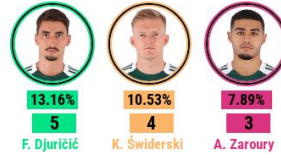






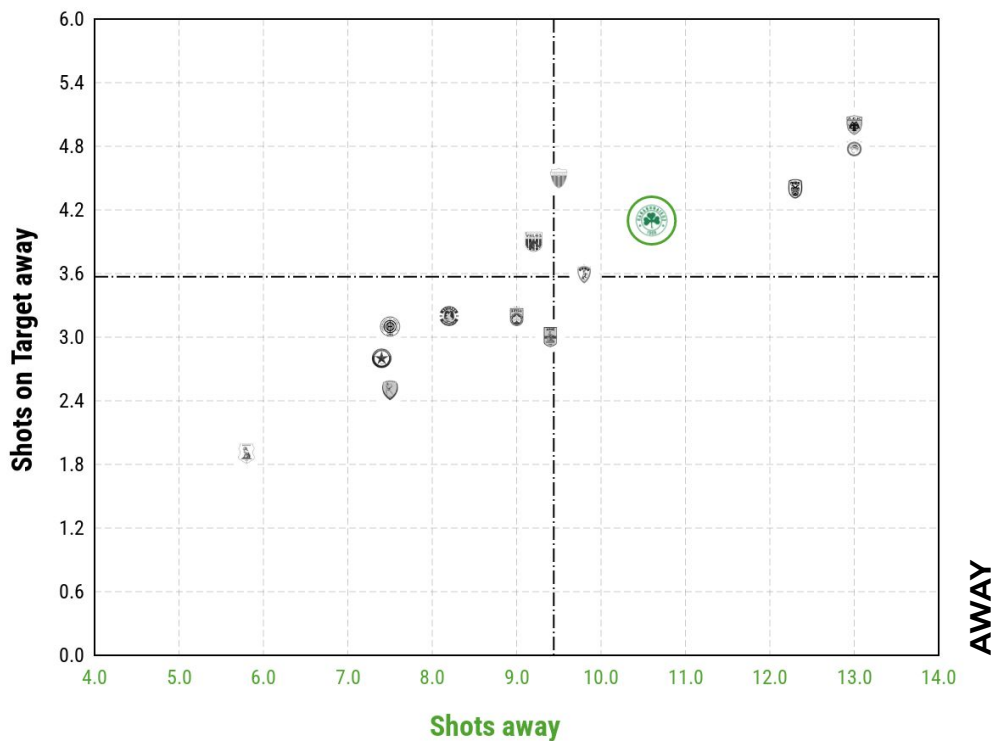
# SHOTS

Shots on Target



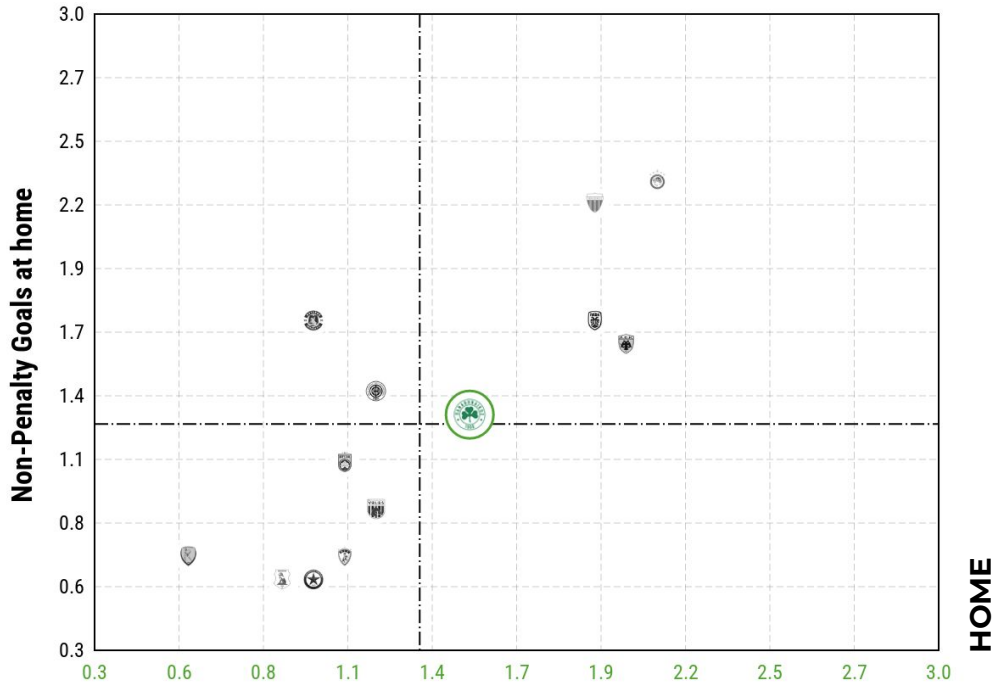
### Shots at home

Shots on Target

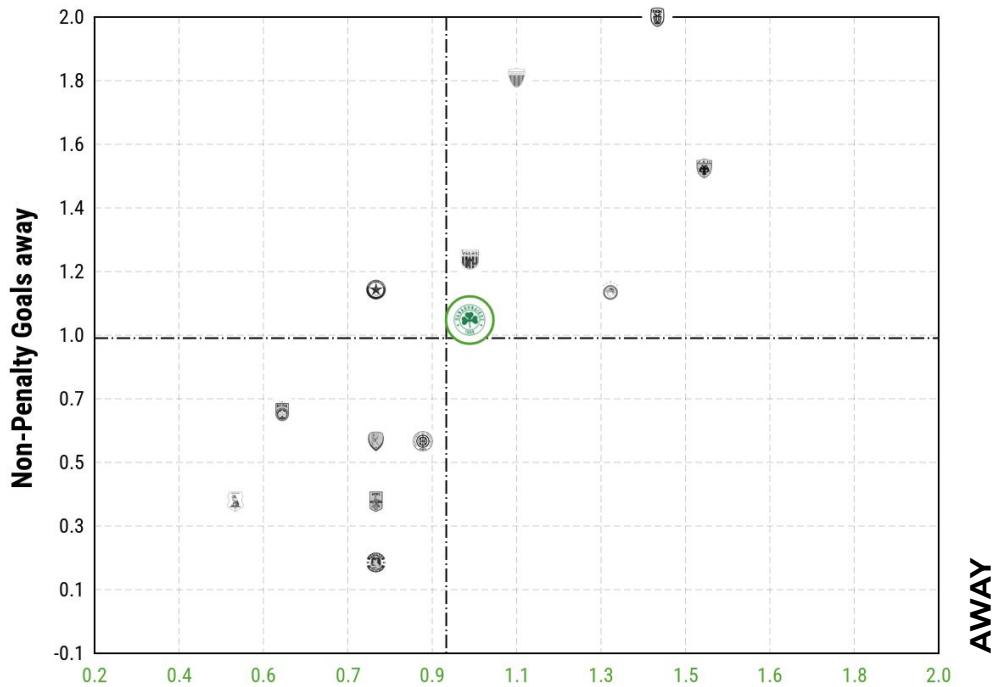
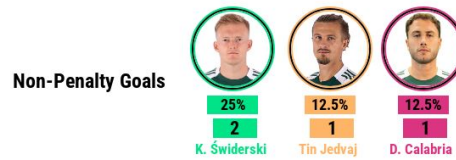




# NPxG vs NON-PENALTY GOALS



NPxG at home



NPxG away

PANATHINAIKOS

# SQUAD'S QUALITY AND PERFORMANCE



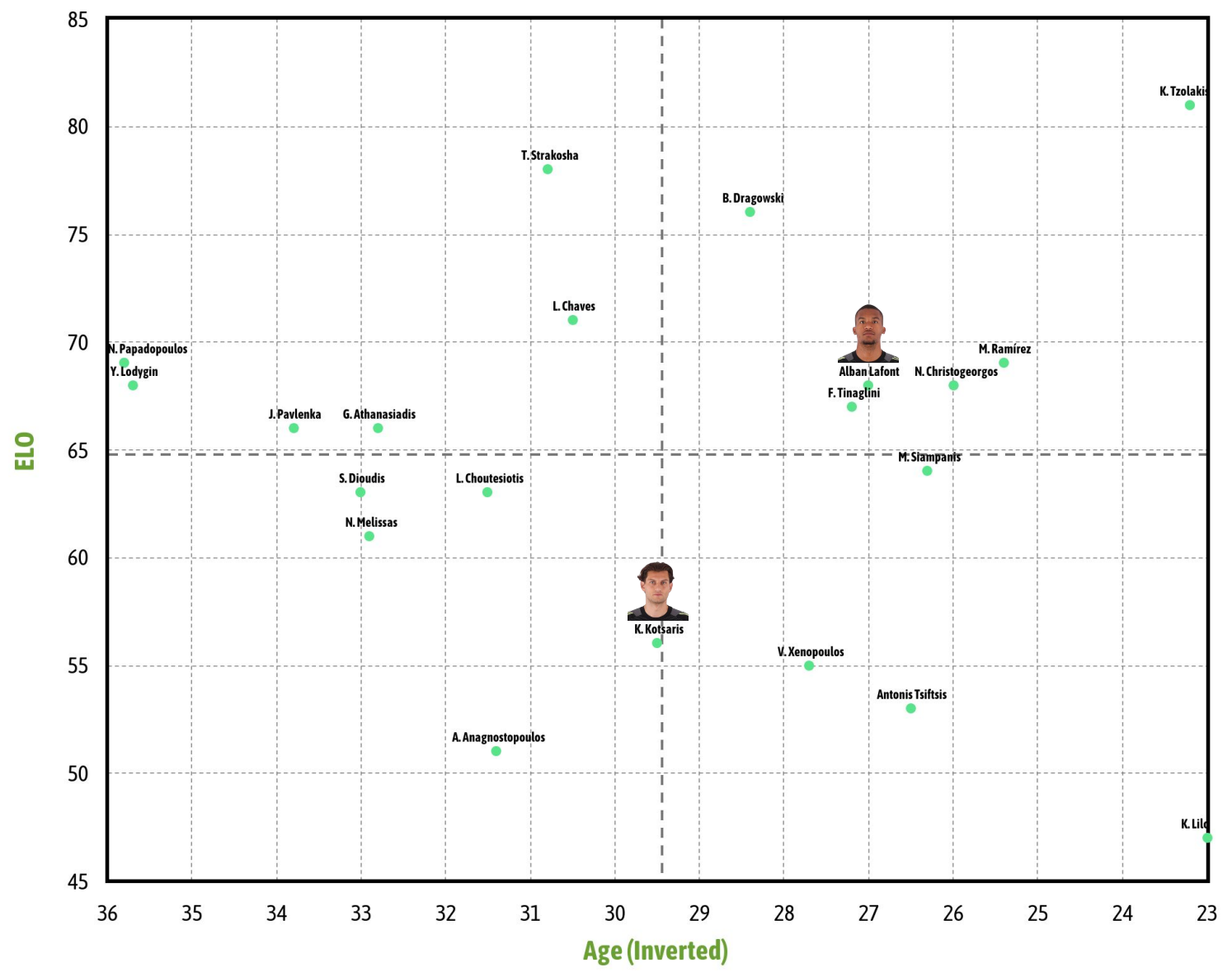


## AGE vs ELO

### AGE VS ELO

Competitions: Greek Super League. 2025/2026 Season.

\* Goalkeeper with +250 minutes played. Per 90 minutes stats, as long as they are greater than 0



Comparative analysis of the performance of Panathinaikos goalkeepers with a minimum of 250 minutes played during the 2025/26 season.



# PLAYERS' PERFORMANCE GOALKEEPERS

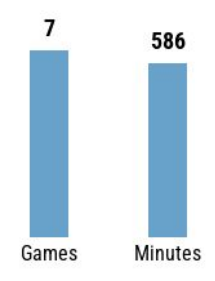
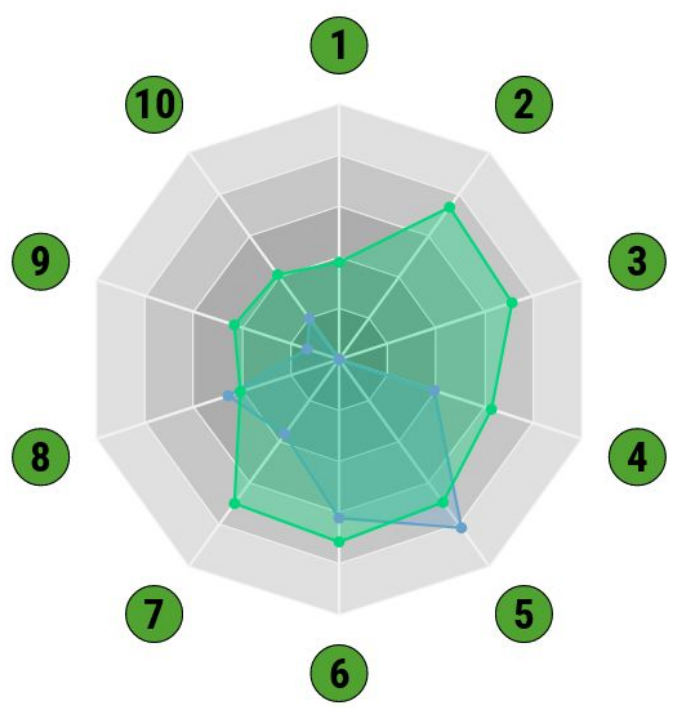


## ALBAN LAFONT

Goalkeeper  
Panathinaikos

AGE **26** CMS **196**

ELO **68** REAP **1.62**



| 1     | 2                               | 3                     | 4              | 5                            | 6              | 7               | 8            | 9                        | 10                |
|-------|---------------------------------|-----------------------|----------------|------------------------------|----------------|-----------------|--------------|--------------------------|-------------------|
| Saves | % Saves / Shots on Target Faced | Saves / Goal Conceded | % Clean Sheets | xG against (shots on target) | Goals Conceded | Goals Prevented | Succ. Passes | Succ. Progressive Passes | Succ. Long Passes |
| 0.85  | 42.86                           | 0.75                  | 28.57          | 0.81                         | 1.13           | -0.31           | 16.2         | 2.39                     | 3.24              |
| 2.12  | 67.56                           | 2.53                  | 41.75          | 0.97                         | 0.96           | 0               | 15.56        | 3.44                     | 3.91              |

Alban Lafont's Greek Super League Per 90' Stats  
Compared to same position players in the TOP 5 in Greek Super League  
Season player: 2025/2026 // Season sample: 2025/2026

*Comparative analysis of the performance of  
**Alban Lafont** against **Top 5**  
of Greek Super League **2025/26** season.*

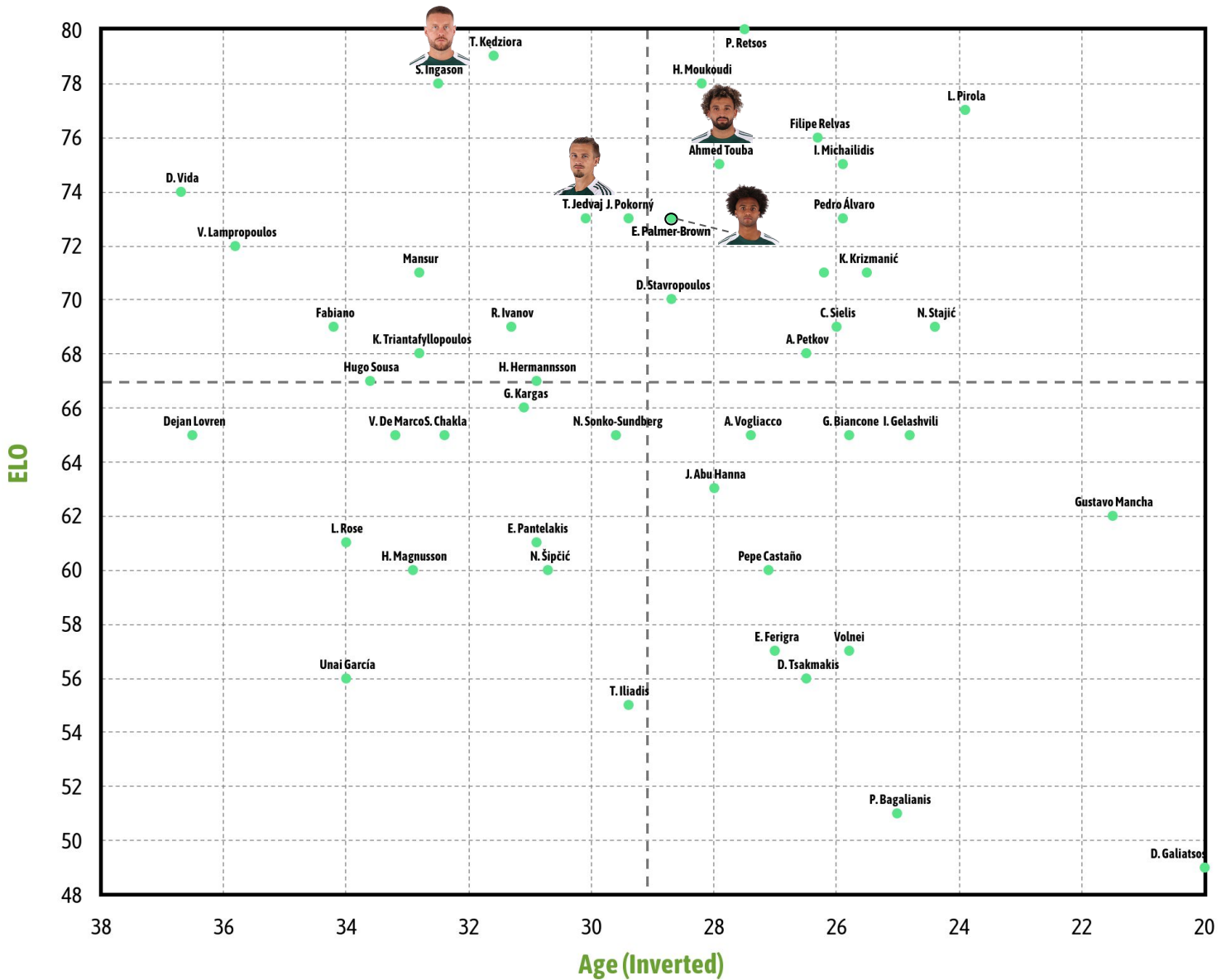


## AGE vs ELO

### AGE VS ELO

Competitions: Greek Super League. 2025/2026 Season.

\* Centre-Back with +250 minutes played. Per 90 minutes stats, as long as they are greater than 0



Comparative analysis of the performance of Panathinaikos centre-backs with a minimum of 250 minutes played during the 2025/26 season.



# PLAYERS' PERFORMANCE CENTRE-BACKS



**AHMED TOUBA**

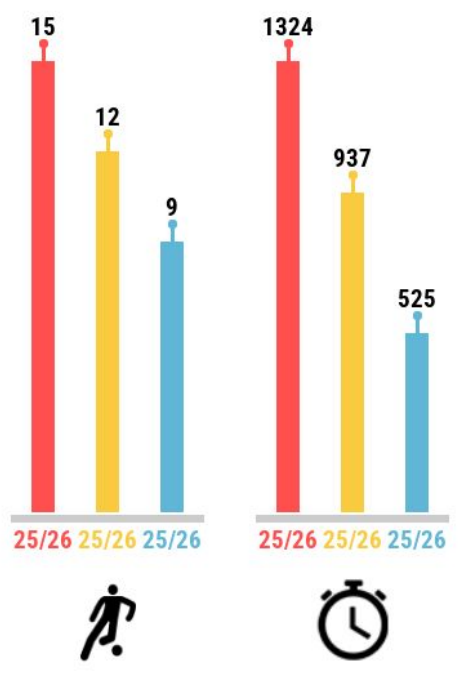
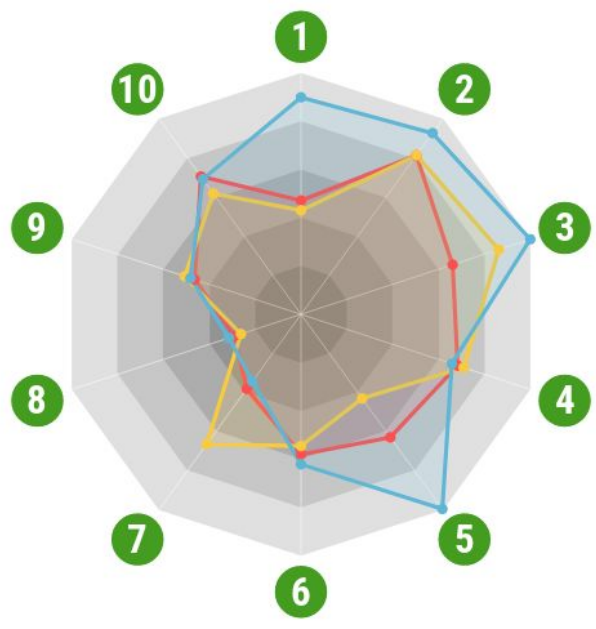
RATING **57**  
 ELO 75  
 REAP 1.57  
 AGE 27 (1998)

**E. PALMER-BROWN**

RATING **58**  
 ELO 73  
 REAP 1.51  
 AGE 28 (1997)

**TIN JEDVAJ**

RATING **69**  
 ELO 73  
 REAP 1.50  
 AGE 30 (1995)



\*Stats per 90, in the competitions: Greek Super League

|       | 1             | 2          | 3                   | 4                     | 5                | 6                  | 7                      | 8                 | 9                        | 10                         |
|-------|---------------|------------|---------------------|-----------------------|------------------|--------------------|------------------------|-------------------|--------------------------|----------------------------|
|       | Interceptions | Recoveries | Defensive Duels Won | % Defensive Duels Won | Aerial Duels Won | % Aerial Duels Won | Succ. Progressive Runs | Succ. Long Passes | Succ. Progressive Passes | % Succ. Progressive Passes |
| 25/26 | 3             | 9.49       | 2.56                | 68.33                 | 2.25             | 58.06              | 0.69                   | 2                 | 4.31                     | 70.41                      |
| 25/26 | 2.74          | 9.5        | 3.34                | 70.91                 | 1.54             | 54.55              | 1.2                    | 1.8               | 4.71                     | 61.8                       |
| 25/26 | 5.72          | 10.82      | 3.87                | 65.79                 | 3.56             | 62.16              | 0.62                   | 2.16              | 4.48                     | 69.05                      |

\* Ratings Averaged Regarding Chosen Metrics

*Comparative analysis of the performance of Panathinaikos centre-backs with a minimum of 500 minutes played during the 2025/26 season.*

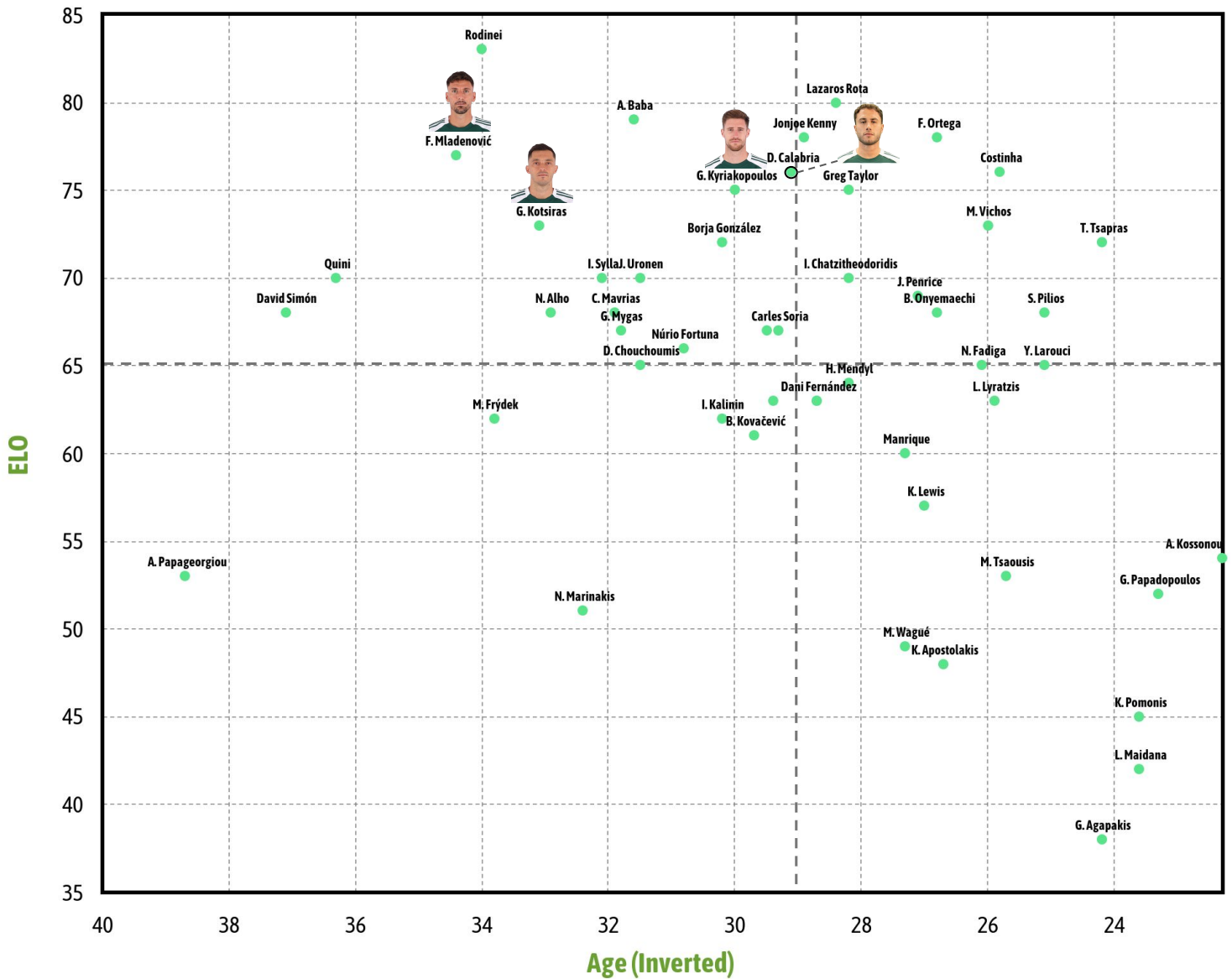


## AGE vs ELO

### AGE VS ELO

Competitions: Greek Super League. 2025/2026 Season.

\* Full-backs with +250 minutes played. Per 90 minutes stats, as long as they are greater than 0



Comparative analysis of the performance of Panathinaikos full-backs with a minimum of 250 minutes played during the 2025/26 season.



# PLAYERS' PERFORMANCE

## FULL-BACKS



### D. CALABRIA

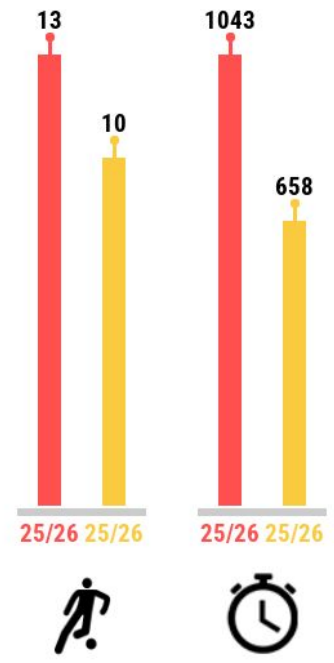
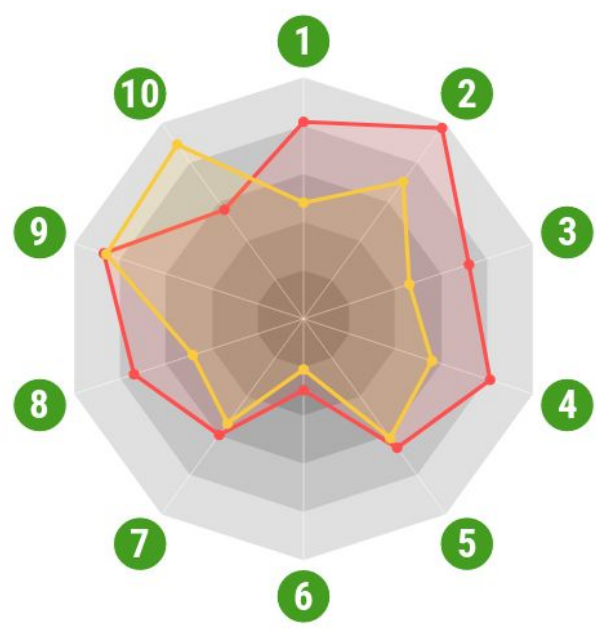


**RATING 70**  
 ELO 76  
 REAP 1.53  
 AGE 29 (1996)

### G. KYRIAKOPOULOS



**RATING 58**  
 ELO 75  
 REAP 1.50  
 AGE 29 (1996)

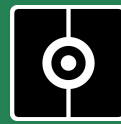


\*Stats per 90, in the competitions: Greek Super League

|       | 1             | 2          | 3                    | 4                   | 5                     | 6                | 7                   | 8                      | 9                        | 10            |
|-------|---------------|------------|----------------------|---------------------|-----------------------|------------------|---------------------|------------------------|--------------------------|---------------|
|       | Interceptions | Recoveries | Opp. Half Recoveries | Defensive Duels Won | % Defensive Duels Won | Aerial Duels Won | Offensive Duels Won | Succ. Progressive Runs | Succ. Progressive Passes | Succ. Crosses |
| 25/26 | 5.19          | 9.42       | 3.19                 | 4.63                | 65.91                 | 0.72             | 1.84                | 1.76                   | 7.11                     | 1.12          |
| 25/26 | 3.06          | 6.77       | 2.04                 | 3.19                | 60.98                 | 0.51             | 1.66                | 1.15                   | 7.02                     | 1.79          |

\* Ratings Averaged Regarding Chosen Metrics

*Comparative analysis of the performance of Panathinaikos full-backs with a minimum of 500 minutes played during the 2025/26 season.*

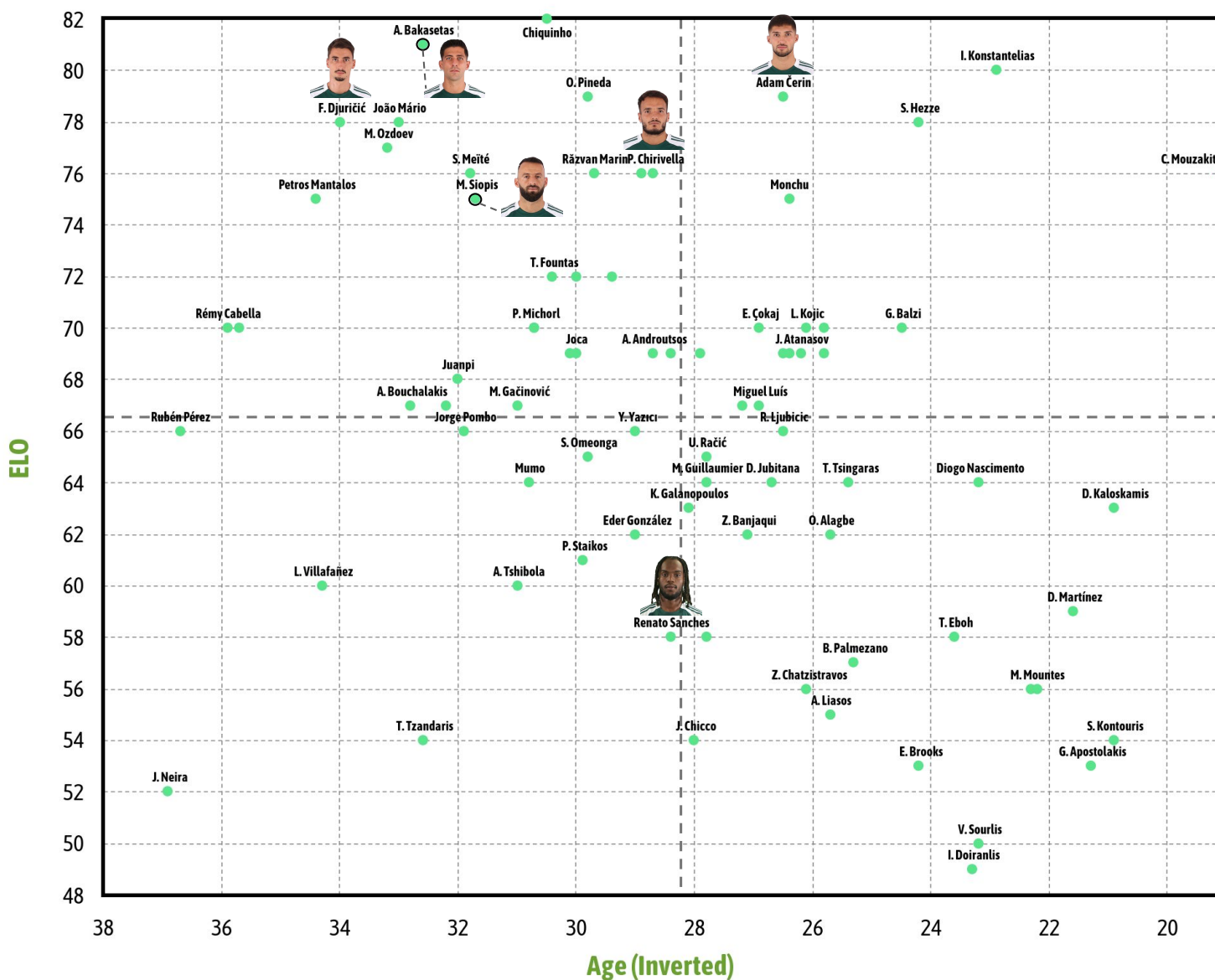


## AGE vs ELO

### AGE VS ELO

Competitions: Greek Super League. 2025/2026 Season.

\* Midfielders with +250 minutes played. Per 90 minutes stats, as long as they are greater than 0



Comparative analysis of the performance of **Panathinaikos midfielders** with a minimum of **250 minutes** played during the **2025/26 season**.



# PLAYERS' PERFORMANCE MIDFIELDERS



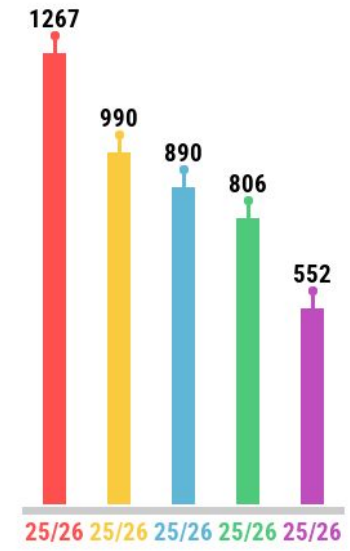
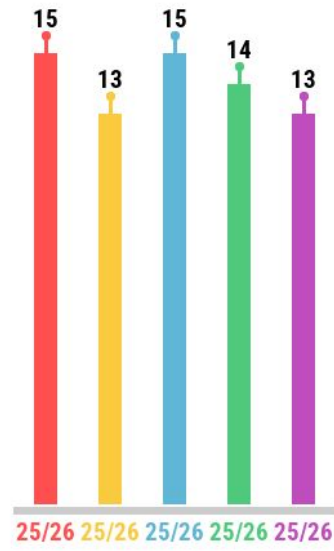
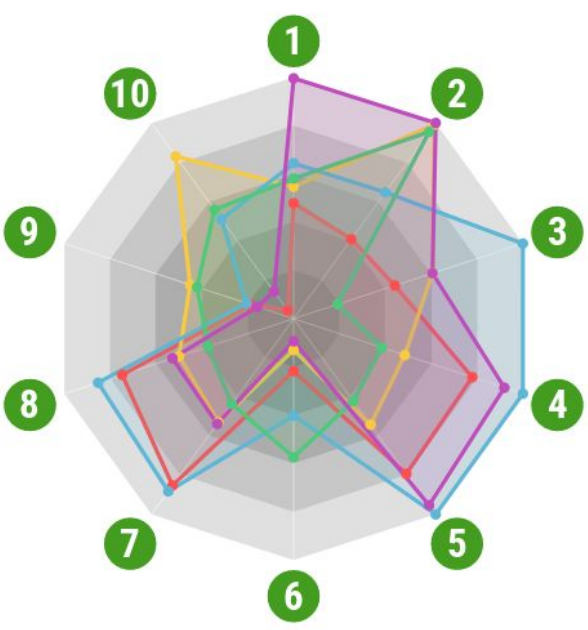
**P. CHIRIVELLA**  
 RATING 49  
 ELO 76  
 REAP 1.60  
 AGE 28 (1997)

**A. BAKASSETAS**  
 RATING 56  
 ELO 81  
 REAP 1.75  
 AGE 32 (1993)

**ADAM CERIN**  
 RATING 71  
 ELO 79  
 REAP 1.72  
 AGE 26 (1999)

**F. DJURICIC**  
 RATING 49  
 ELO 78  
 REAP 1.56  
 AGE 33 (1992)

**M. SIOPIIS**  
 RATING 59  
 ELO 75  
 REAP 1.55  
 AGE 31 (1994)



\*Stats per 90, in the competitions: Greek Super League

|                           | 1    | 2    | 3    | 4     | 5    | 6    | 7     | 8    | 9    | 10   |
|---------------------------|------|------|------|-------|------|------|-------|------|------|------|
| Offensive Duels Won       |      |      |      |       |      |      |       |      |      |      |
| Defensive Duels Won       |      |      |      |       |      |      |       |      |      |      |
| Aerial Duels Won          |      |      |      |       |      |      |       |      |      |      |
| Recoveries                |      |      |      |       |      |      |       |      |      |      |
| Opp. Half Recoveries      |      |      |      |       |      |      |       |      |      |      |
| Succ. Progressive Runs    |      |      |      |       |      |      |       |      |      |      |
| Succ. Passes              |      |      |      |       |      |      |       |      |      |      |
| Succ. Progressive Passes  |      |      |      |       |      |      |       |      |      |      |
| Succ. Passes into the Box |      |      |      |       |      |      |       |      |      |      |
| Shots                     |      |      |      |       |      |      |       |      |      |      |
| 25/26                     | 2.34 | 1.34 | 0.94 | 8.02  | 4.41 | 1    | 47.27 | 5.28 | 0.67 | 0.13 |
| 25/26                     | 2.67 | 3.27 | 1.29 | 4.99  | 3.01 | 0.6  | 29.34 | 3.53 | 1.63 | 2.58 |
| 25/26                     | 3.15 | 2.13 | 2.13 | 10.29 | 5.56 | 1.85 | 48.94 | 6.02 | 0.74 | 1.58 |
| 25/26                     | 2.84 | 3.15 | 0.41 | 3.96  | 2.34 | 2.64 | 24.18 | 2.64 | 1.52 | 1.73 |
| 25/26                     | 4.87 | 3.3  | 1.29 | 9.46  | 5.3  | 0.43 | 29.81 | 3.73 | 0.57 | 0.43 |

\* Ratings Averaged Regarding Chosen Metrics

Comparative analysis of the performance of Panathinaikos midfielders with a minimum of 500 minutes played during the 2025/26 season.

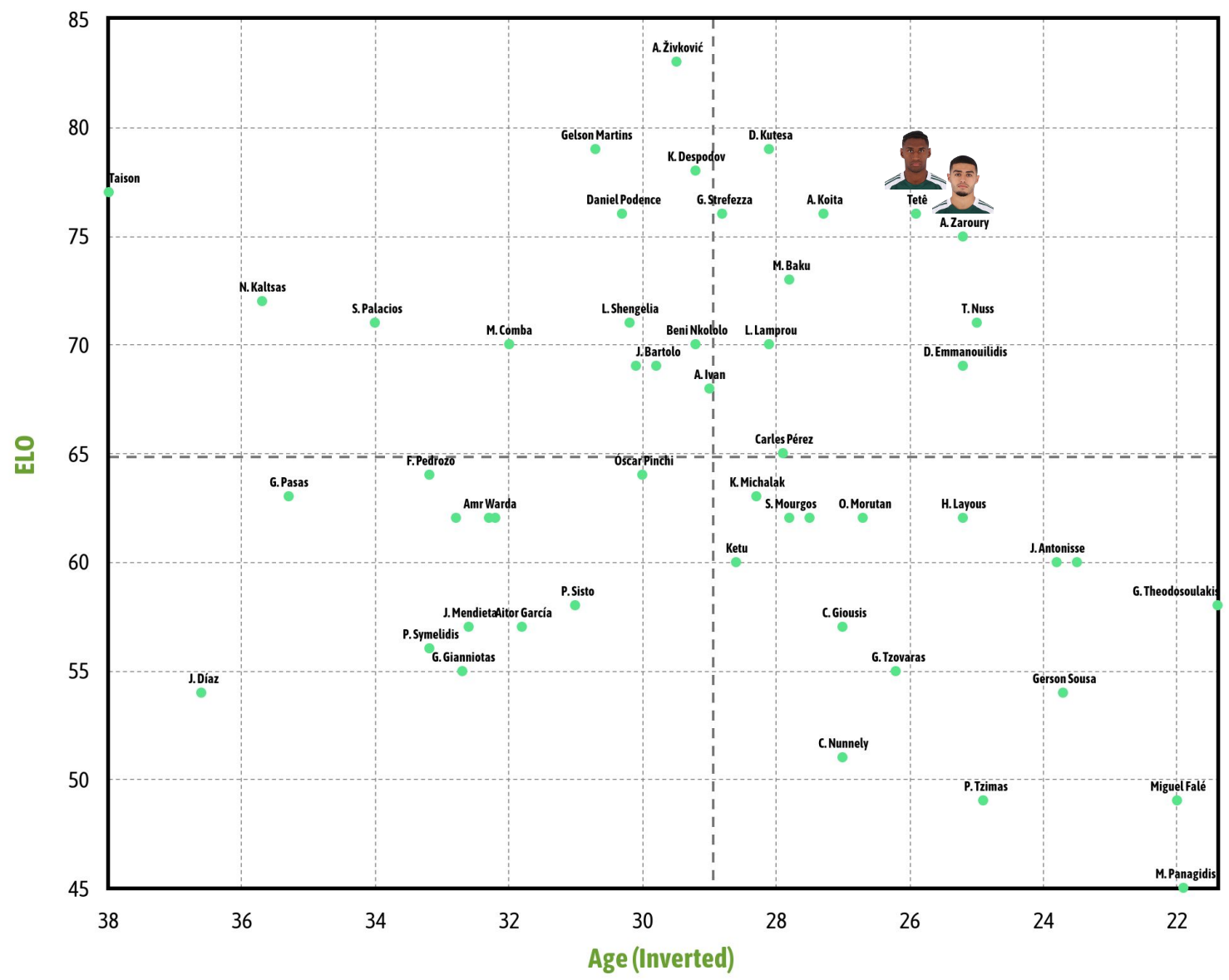


## AGE vs ELO

### AGE VS ELO

Competitions: Greek Super League. 2025/2026 Season.

\*Wingers with +250 minutes played. Per 90 minutes stats, as long as they are greater than 0



Comparative analysis of the performance of Panathinaikos wingers with a minimum of 250 minutes played during the 2025/26 season.



# PLAYERS' PERFORMANCE

## WINGERS



### TETE

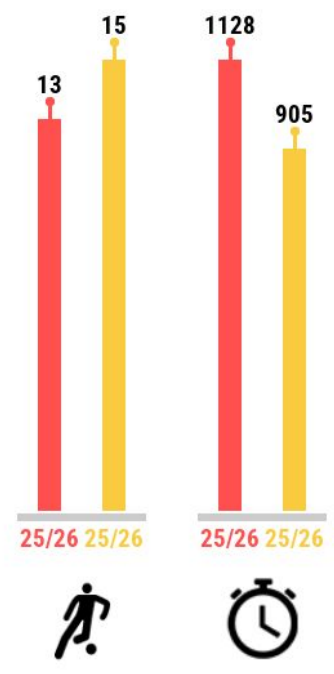
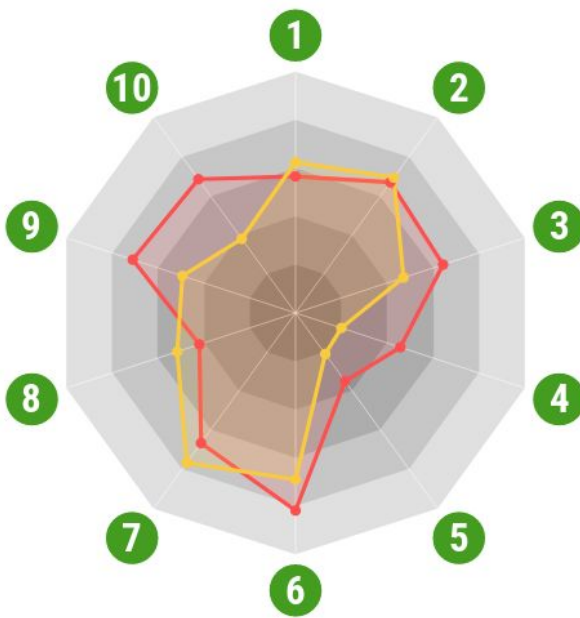


**RATING 60**  
 ELO 76  
 REAP 1.61  
 AGE 25 (2000)

### A. ZAROURY



**RATING 50**  
 ELO 75  
 REAP 1.54  
 AGE 25 (2000)



**\*Stats per 90, in the competitions: Greek Super League**

|                             | 1            | 2                 | 3    | 4    | 5    | 6     | 7    | 8    | 9    | 10   |
|-----------------------------|--------------|-------------------|------|------|------|-------|------|------|------|------|
| <b>Offensive Duels Won</b>  |              |                   |      |      |      |       |      |      |      |      |
| Succ. Progressive Runs      | 3.05         | 3.87              |      |      |      |       |      |      |      |      |
| Shots in the Box            |              |                   | 1.12 | 0.16 | 0.15 | 81.86 |      |      |      |      |
| NPxG                        |              |                   |      | 0.07 | 0.09 |       |      |      |      |      |
| % Succ. Passes              |              |                   |      |      |      | 69.06 |      |      |      |      |
| Succ. Crosses               |              |                   |      |      |      |       | 1.37 |      |      |      |
| Key Passes                  |              |                   |      |      |      |       |      | 0.52 |      |      |
| Counter-Pressing Recoveries |              |                   |      |      |      |       |      |      | 2.23 | 2.31 |
| Opp. Half Recoveries        |              |                   |      |      |      |       |      |      | 1.55 | 1.28 |
| <b>Player</b>               | <b>Tete</b>  | <b>A. Zaroury</b> |      |      |      |       |      |      |      |      |
| <b>Season</b>               | <b>25/26</b> | <b>25/26</b>      |      |      |      |       |      |      |      |      |

\* Ratings Averaged Regarding Chosen Metrics

*Comparative analysis of the performance of Panathinaikos wingers with a minimum of 500 minutes played during the 2025/26 season.*

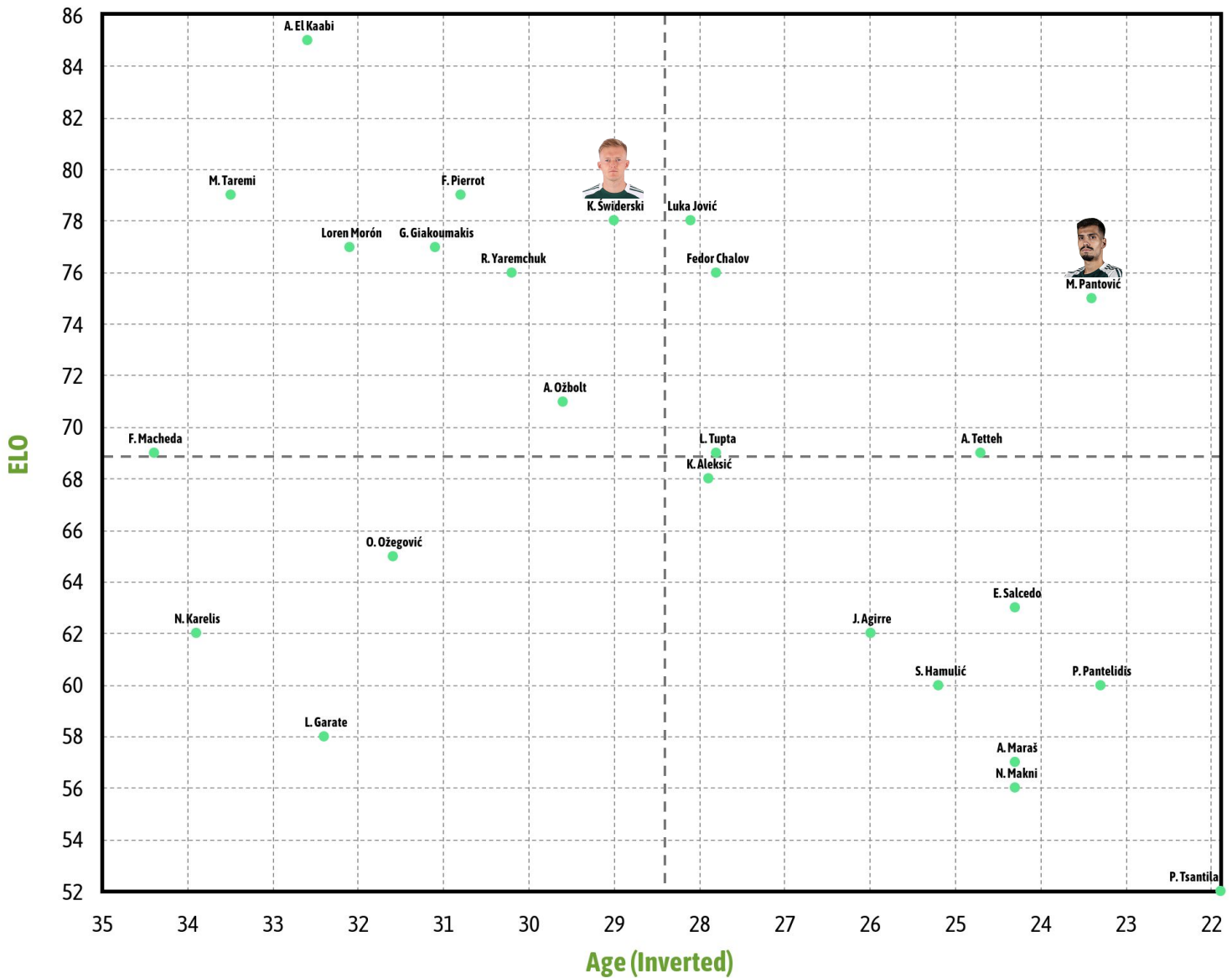


## AGE vs ELO

### AGE VS ELO

Competitions: Greek Super League. 2025/2026 Season.

\* Centre-Forwards with +250 minutes played. Per 90 minutes stats, as long as they are greater than 0



Comparative analysis of the performance of **Panathinaikos centre-forwards** with a minimum of **250 minutes** played during the **2025/26 season**.



# PLAYERS' PERFORMANCE CENTRE-FORWARDS



## KAROL ŚWIDERSKI



Striker  
Panathinaikos

AGE

28

CMS

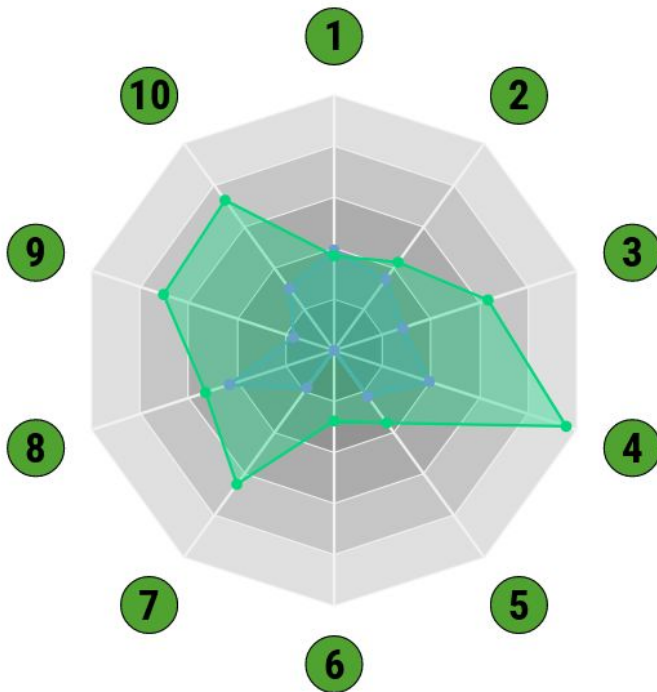
184

ELO

78

REAP

1.65



| Key Passes | Shots on Target | NPxG | Non-Penalty Goals | Offensive Duels Won | Succ. Progressive Runs | Aerial Duels Won | % Aerial Duels Won | Counter-Pressing Recoveries | Opp. Half Recoveries |
|------------|-----------------|------|-------------------|---------------------|------------------------|------------------|--------------------|-----------------------------|----------------------|
| 1          | 2               | 3    | 4                 | 5                   | 6                      | 7                | 8                  | 9                           | 10                   |
| 0.22       | 0.89            | 0.21 | 0.22              | 1.68                | 0.11                   | 1.12             | 32.26              | 0.78                        | 0.89                 |
| 0.21       | 1.02            | 0.37 | 0.54              | 2.38                | 0.72                   | 2.87             | 35.05              | 1.55                        | 1.47                 |

Karol Świderski's Greek Super League Per 90' Stats  
 Compared to same position players in the TOP 5 in Greek Super League  
 Season player: 2025/2026 // Season sample: 2025/2026

*Comparative analysis of the performance of  
**Karol Świderski** against **Top 5**  
 of Greek Super League **2025/26** season.*



## ELO

What is the ELO?

It is the value that determines the level of a player. It is calculated taking into account diverse variables: match difficulty, opponents, competitions, impact in high pressure moments, goals and decisive assists, states of form...



## REAP

What is the REAP?

It is a value that compares the performance of the player with others like him/her (players of similar , position and leagues). We thus find out the profiles that are above average than what is expected of a determined player at a specific .



## Market Value

What is the Market Value?

It is a mechanism that determines the value of a player in financial terms but after combining relative factors to sporting performance, transfer possibilities, good health/absence of injuries and business generation with sponsorship contracts.



## Potential

What is the Potential?

It is an estimation of the maximum ELO possible that a player can reach according to his/her particular performance in a precise moment of his/her career, and the years left that the player in question has ahead of him/her.



# **BESOCCER** **Pro**

**FOOTBALL TURNED INTO STATS**  
THE STATS TOOL

