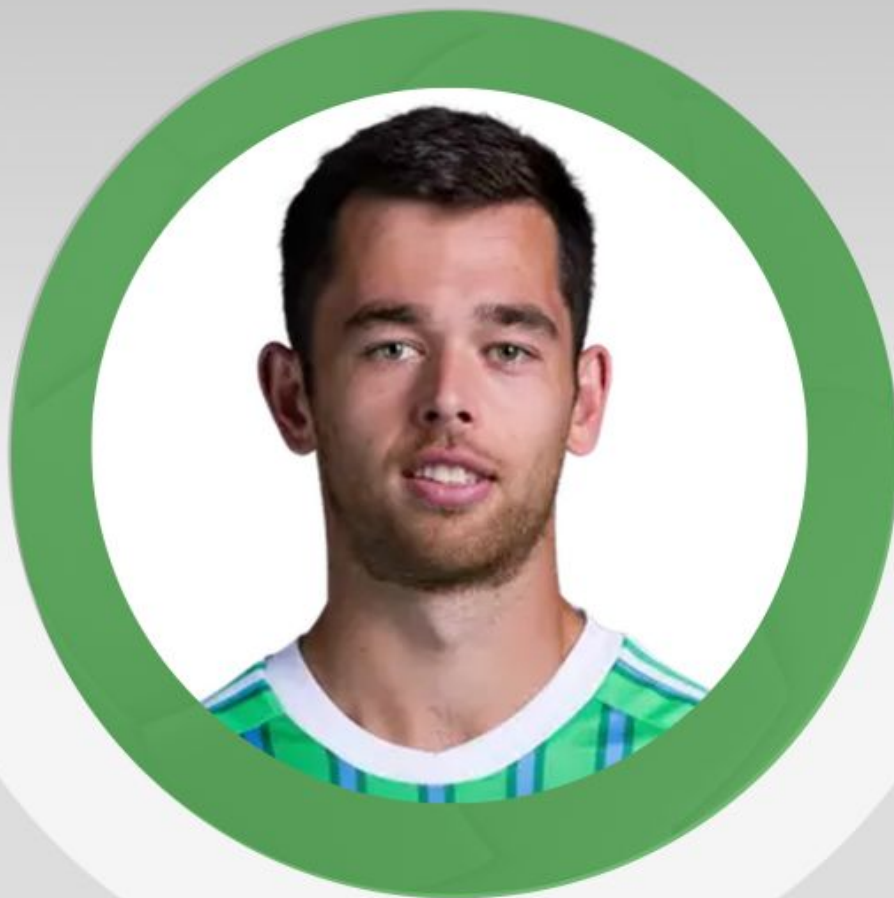


PLAYER ANALYSIS

# ADAPTABILITY REPORT

JACKSON RAGEN



# PROFILE OF THE PLAYER

## PERFORMANCE EVOLUTION



# J. RAGEN



Centre-Back  
Seattle Sounders



Position  
**Centre-Back**



Born in Seattle, US  
**24 September 1998**



198 centimeters  
**93 kilograms**



Preferred foot  
**Right**



Agent  
**Octagon**



Contract will expire on  
**31 December 2027**

## TOP PLAYER

ELO  
**81**

POT  
**84**

REAP  
**1.71**

€ MIL.  
**8.7**

## Stats 24/25 season

40

Games Played

2

Goals

1

Assists

8

Cards

3356

Minutes

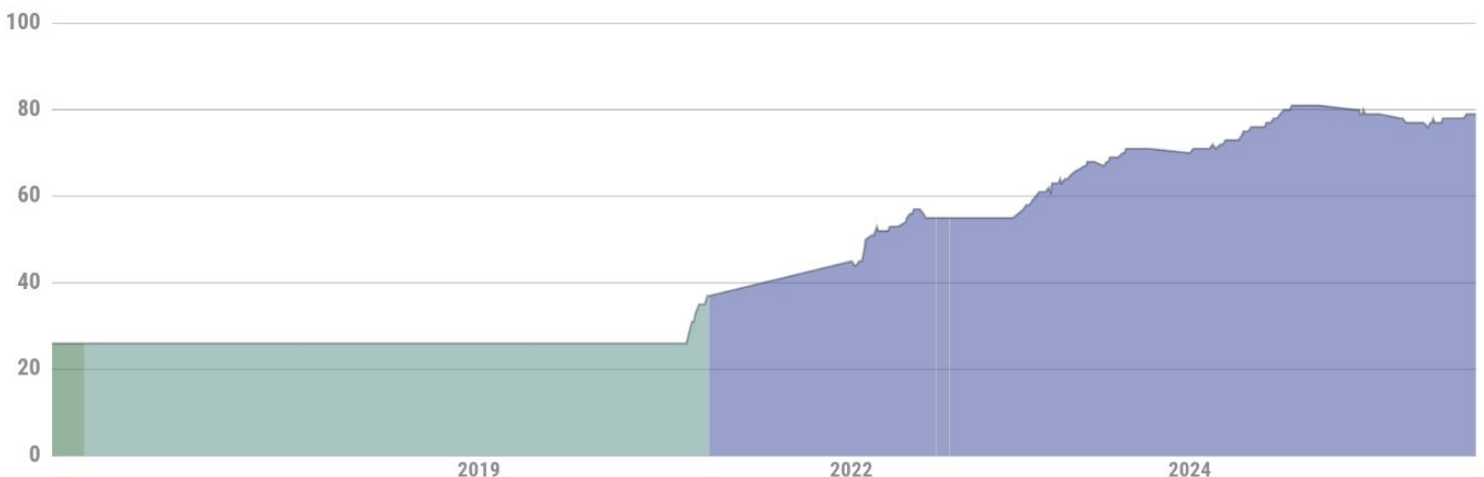
## ELO Evolution

▲ 4  
6 months ago

▲ 2  
1 year ago

▲ 11  
2 years ago

=  
Top. ELO



# CAREER ANALYSIS

## PERFORMANCE EVOLUTION



## JACKSON RAGEN



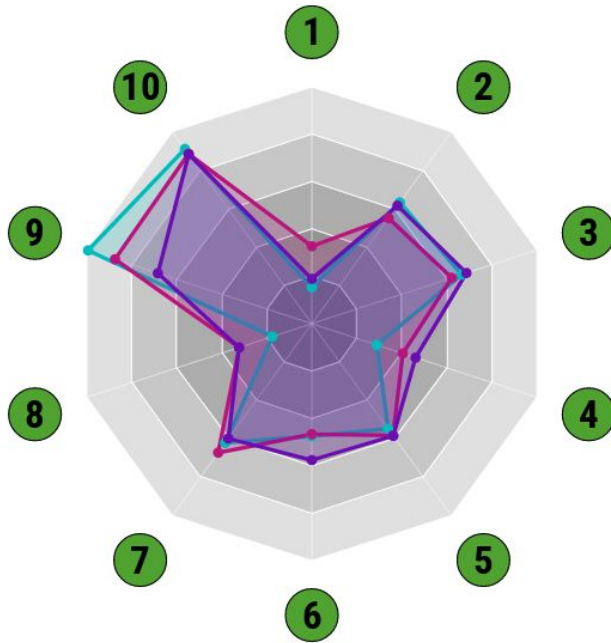
Centre-Back  
Seattle Sounders

AGE  
**27**

CMS  
**198**

ELO  
**81**

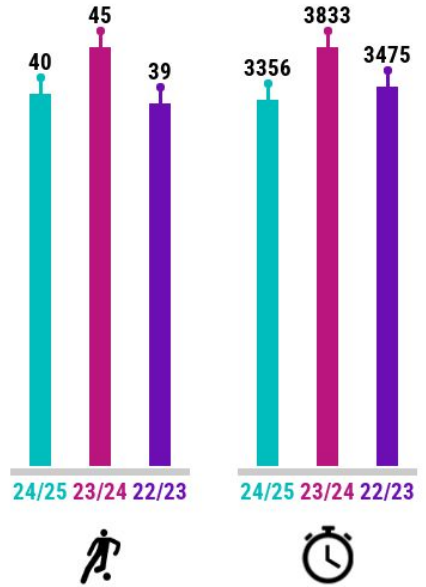
REAP  
**1.71**



55  
Rating

57  
Rating

56  
Rating



\*Stats per 90

	1	2	3	4	5	6	7	8	9	10
Succ. Progressive Runs	0.48	5.21								
Interceptions		5.21	10.69	2.04	65.63	2.25	62	1.89	8.46	81.35
Recoveries		4.54	9.99	2.85	69.84	2.21	67.11	3.48	7.44	79.08
Defensive Duels Won			11.03	3.25	70.05	2.73	59.79	3.49	5.82	78.91
% Defensive Duels Won										
Aerial Duels Won										
% Aerial Duels Won										
Succ. Long Passes										
Succ. Progressive Passes										
% Succ. Progressive Passes										

### CAREER

Seas.	Club	GP	S	⊕	Min.	Seas.	Club	GP	S	⊕	Min.
24/25	Seattle Sounders	40	37	2	3356	21/22	Seattle Sounders	30	18	0	1744
23/24	Seattle Sounders	45	43	4	3833	20/21	Tacoma Defiance	16	16	1	1440
22/23	Seattle Sounders	39	39	0	3475		Michigan Wolverines	11	11	5	943
21/22	Tacoma Defiance	2	2	0	136	18/19	Michigan Wolverines	1	1	0	90
						16/17	Seattle Sounders II	3	1	0	118



## JACKSON RAGEN



Centre-Back  
Seattle Sounders

AGE  
**27**

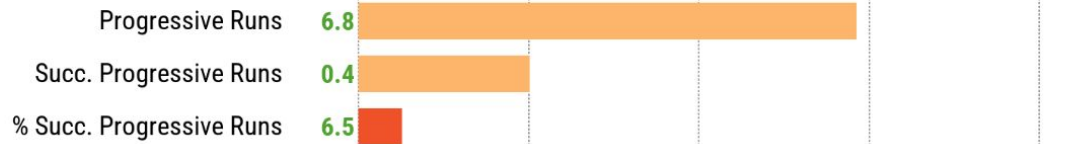
CMS  
**198**

ELO  
**81**

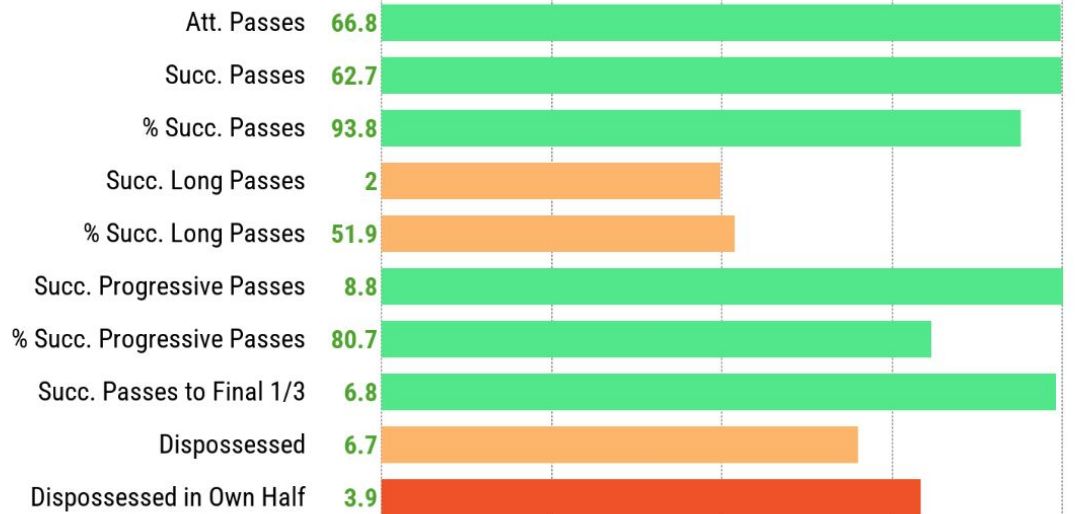
REAP  
**1.71**

### STATS PER 90'

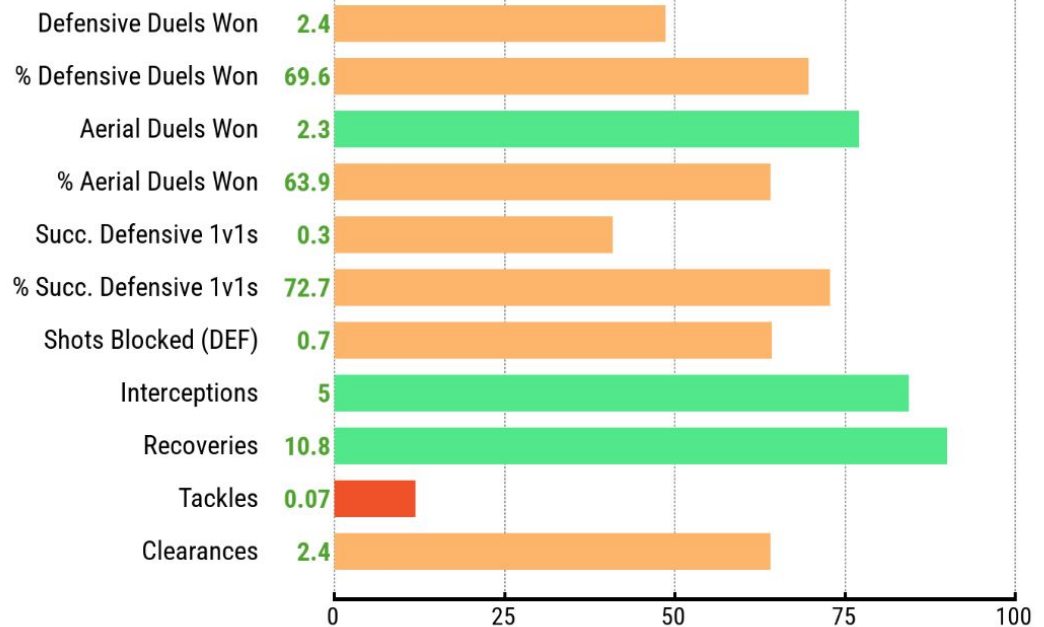
OFFENSIVE



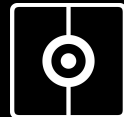
PASSING



DEFENSIVE



Competitions: MLS



# JACKSON RAGEN



Centre-Back  
Seattle Sounders

AGE

27

CMS

198

ELO

81

REAP

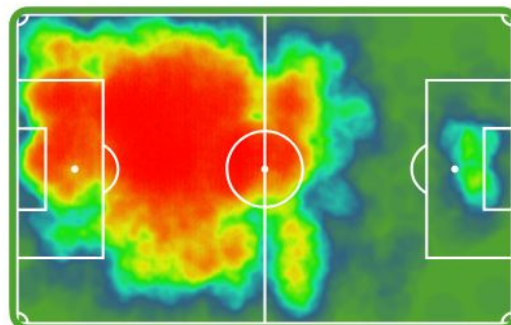
1.71



RATING PER POSITION

0.1%	1.1%	1.2%	0%
0.1%	0.5%	0.4%	0.2%
0.5%	1.4%	0.8%	0.4%
1.9%	5.6%	3.3%	2.3%
2.7%	8.9%	5.7%	2.4%
4.8%	15.7%	8.8%	2.5%
2.9%	9.7%	4%	1.2%
2.4%	5.7%	2.5%	0.5%

ACTION AREAS



POSITIONING ON THE PITCH

On the wings	9%	Own half	69%
Central	28%	Opposite half	10%
Inside	63%	Own box	9%
In midfield	21%	Opposition box	3%
In both boxes	11%	Left wing	6%
Midfield area	38%	Right wing	3%

## LAST YEAR STATS

### STRENGTHS

- ✓ Defensive duels
- ✓ Aerial dominance
- ✓ Progressive passing

### WEAKNESSES

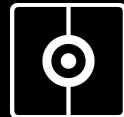
- ✗ Long-range passing
- ✗ Ball carries

## POSITIONS

CBC	Sweeper	77%
CBL	Left Centre-Back	62%
CBR	Right Centre-Back	60%
DM	Defensive Midfielder	50%

# PERFORMANCE ANALYSIS

## HEAT MAP EVOLUTION



# JACKSON RAGEN



Centre-Back  
Seattle Sounders

AGE **27** CMS **198**

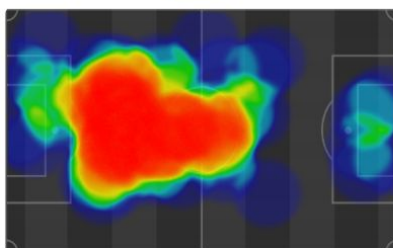
ELO **81** REAP **1.71**



22/09/2025

2-1

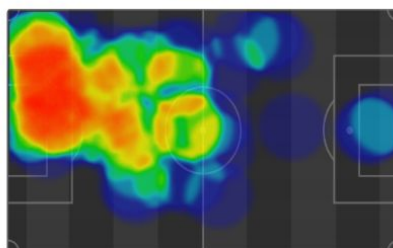
101



28/09/2025

2-2

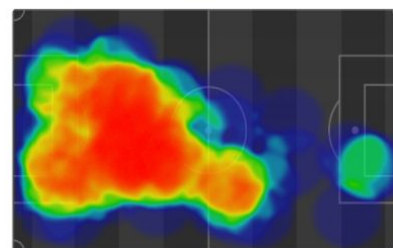
104



05/10/2025

1-0

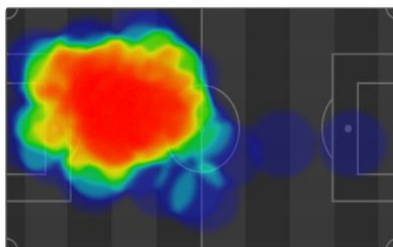
100



12/10/2025

1-0

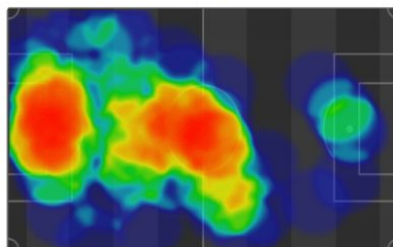
99



19/10/2025

1-2

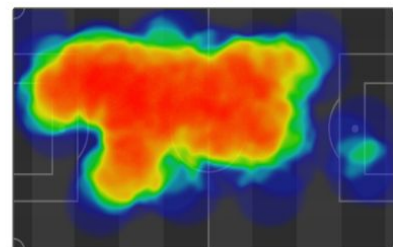
103



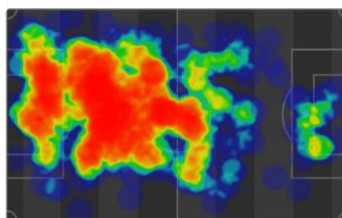
08/11/2025

3 (7-6) 3

106



GENERAL





# JACKSON RAGEN



Centre-Back  
Seattle Sounders

AGE  
**27**

CMS  
**198**

ELO  
**81**

REAP  
**1.71**



**Colorado Rapids**

Team Similarity

**89.4%**

Players Similarity

**89.3%**

SUITABILITY

**9.58**



**Chicago Fire**

Team Similarity

**90.7%**

Players Similarity

**84.6%**

SUITABILITY

**9.15**



**FC Cincinnati**

Team Similarity

**93.2%**

Players Similarity

**88.3%**

SUITABILITY

**9.10**



**New York City**

Team Similarity

**97.4%**

Players Similarity

**82.8%**

SUITABILITY

**9.09**



**St. Louis City**

Team Similarity

**97.3%**

Players Similarity

**82.9%**

SUITABILITY

**9.08**



**Nashville SC**

Team Similarity

**94.6%**

Players Similarity

**84.8%**

SUITABILITY

**9.02**



**Charlotte FC**

Team Similarity

**87.7%**

Players Similarity

**84.7%**

SUITABILITY

**8.88**



**LA Galaxy**

Team Similarity

**89.9%**

Players Similarity

**85.7%**

SUITABILITY

**8.80**



**Sporting Kansas City**

Team Similarity

**94.3**

Players Similarity

**72.7%**

SUITABILITY

**8.71**



**San Jose Earthquakes**

Team Similarity

**92.8%**

Players Similarity

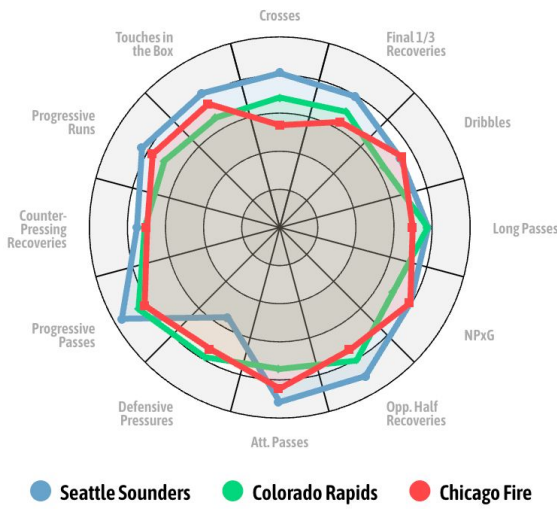
**80.1%**

SUITABILITY

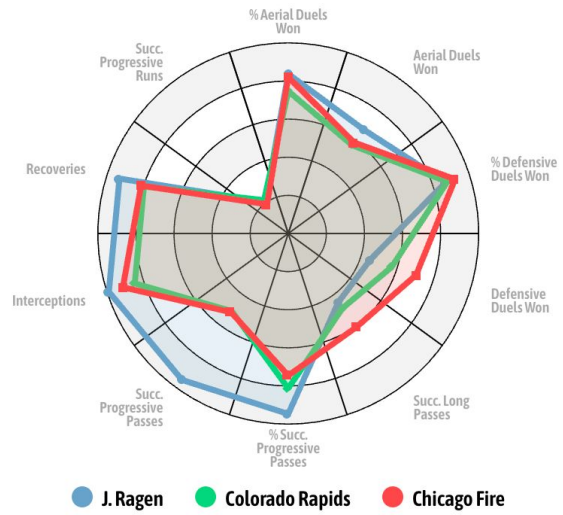
**8.71**



## Teams Comparison



## Players Comparison



### J. RAGEN

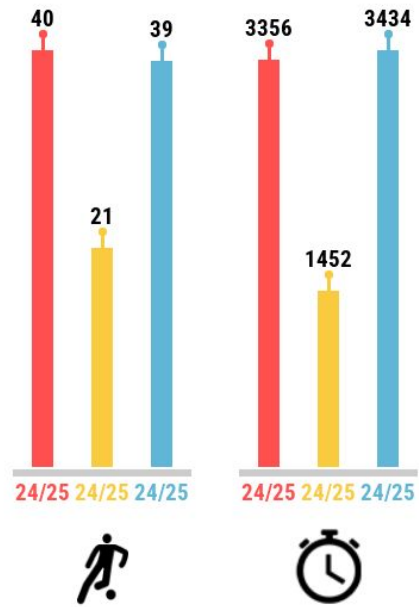
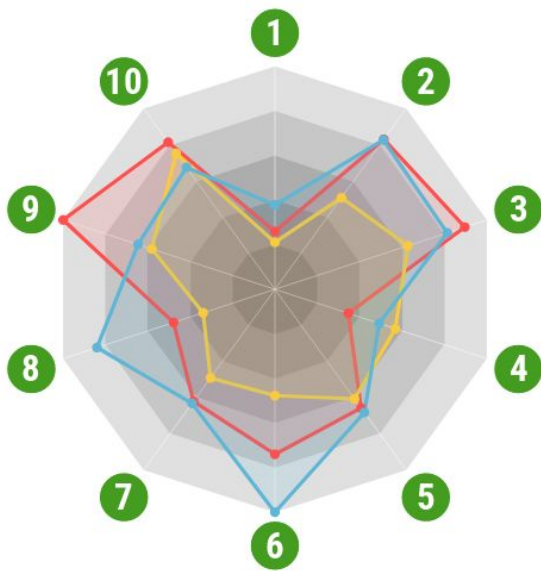
**RATING 66**  
 ELO 81  
 REAP 1.71  
 AGE 27 (1998)

### I. MURPHY

**RATING 52**  
 ELO 69  
 REAP 1.48  
 AGE 26 (2000)

### JACK ELLIOTT

**RATING 70**  
 ELO 78  
 REAP 1.62  
 AGE 30 (1995)



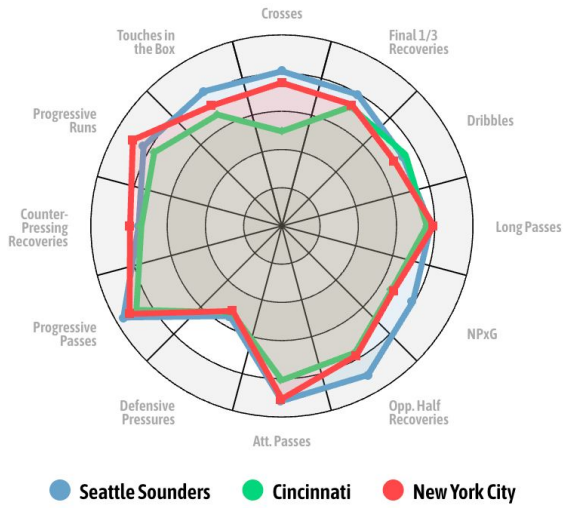
\*Stats per 90

	1	2	3	4	5	6	7	8	9	10
	Succ. Progressive Runs	Interceptions	Recoveries	Defensive Duels Won	% Defensive Duels Won	Aerial Duels Won	% Aerial Duels Won	Succ. Long Passes	Succ. Progressive Passes	% Succ. Progressive Passes
24/25	0.48	5.21	10.69	2.04	65.63	2.25	62	1.89	8.46	81.35
24/25	0.39	3.18	7.49	3.35	60.61	1.45	49.06	1.34	4.92	75.21
24/25	0.7	5.19	9.7	2.9	68.13	3.04	63.11	3.32	5.47	67.44

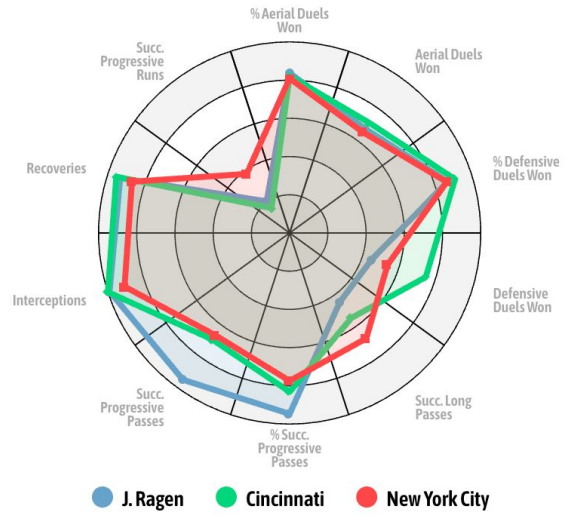
\* Ratings Averaged Regarding Chosen Metrics



## Teams Comparison



## Players Comparison



### J. RAGEN

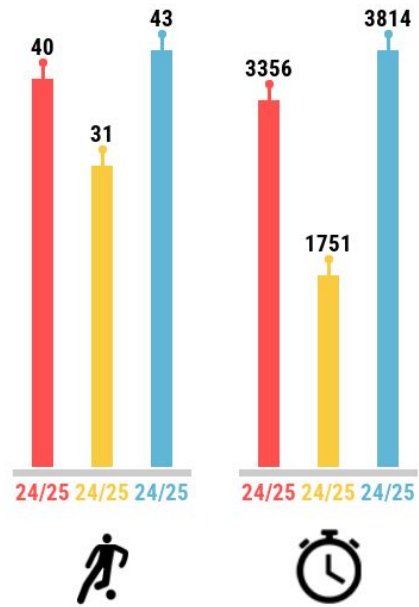
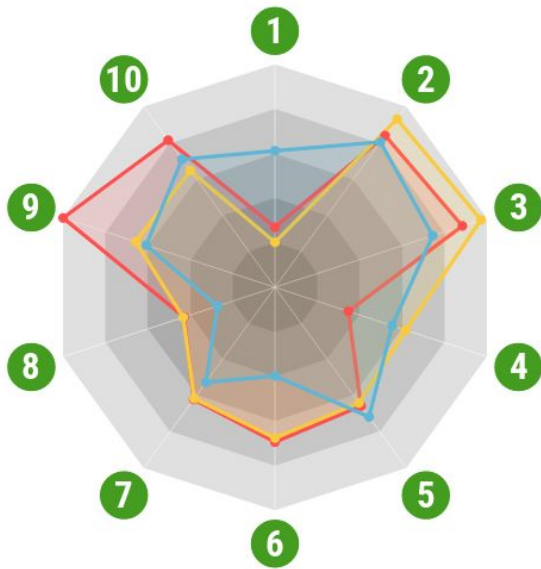
**RATING 66**  
 ELO 81  
 REAP 1.71  
 AGE 27 (1998)

### T. HADEBE

**RATING 64**  
 ELO 67  
 REAP 1.39  
 AGE 30 (1995)

### J. HAAK

**RATING 59**  
 ELO 74  
 REAP 1.69  
 AGE 24 (2001)



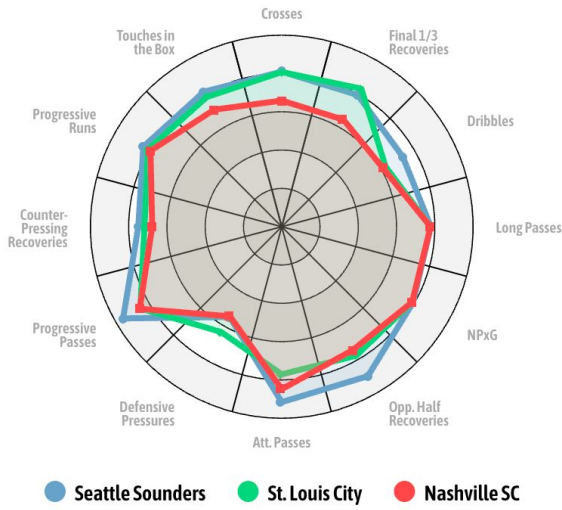
\*Stats per 90

	1	2	3	4	5	6	7	8	9	10
24/25	0.48	5.21	10.69	2.04	65.63	2.25	62	1.89	8.46	81.35
24/25	0.36	5.78	11.75	3.64	64	2.19	61.54	1.91	5.56	64.55
24/25	1.09	4.99	9	3.26	71.7	1.29	52.63	1.2	5.14	70.8

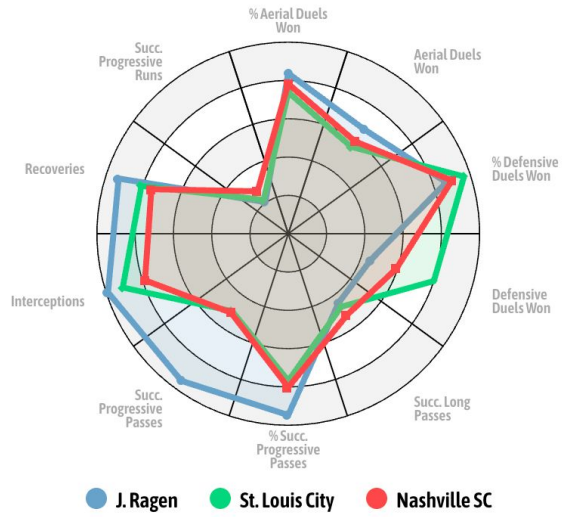
\* Ratings Averaged Regarding Chosen Metrics



## Teams Comparison



## Players Comparison



### J. RAGEN

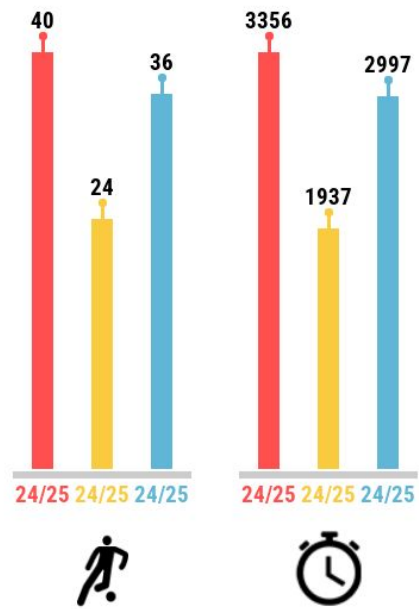
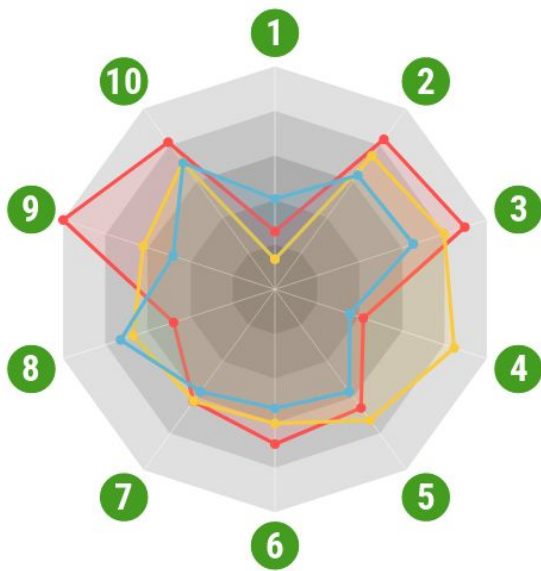
RATING **67**  
 ELO **81**  
 REAP **1.71**  
 AGE **27 (1998)**

### T. BAUMGARTL

RATING **65**  
 ELO **65**  
 REAP **1.34**  
 AGE **29 (1996)**

### J. MAHER

RATING **56**  
 ELO **75**  
 REAP **1.61**  
 AGE **26 (1999)**



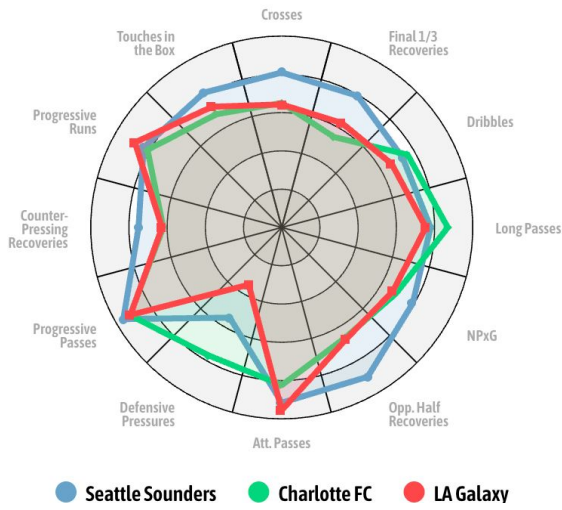
\*Stats per 90

	1	2	3	4	5	6	7	8	9	10
	Succ. Progressive Runs	Interceptions	Recoveries	Defensive Duels Won	% Defensive Duels Won	Aerial Duels Won	% Aerial Duels Won	Succ. Long Passes	Succ. Progressive Passes	% Succ. Progressive Passes
24/25	0.48	5.21	10.69	2.04	65.63	2.25	62	1.89	8.46	81.35
24/25	0.25	4.64	9.53	4.14	72.46	1.95	61.84	2.65	5.26	70.17
24/25	0.75	3.96	7.79	1.73	56.64	1.73	56.64	2.88	4.07	69.91

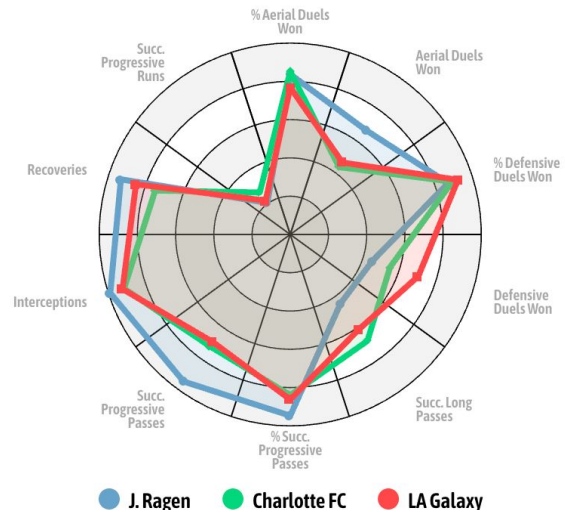
\* Ratings Averaged Regarding Chosen Metrics



## Teams Comparison



## Players Comparison



### J. RAGEN

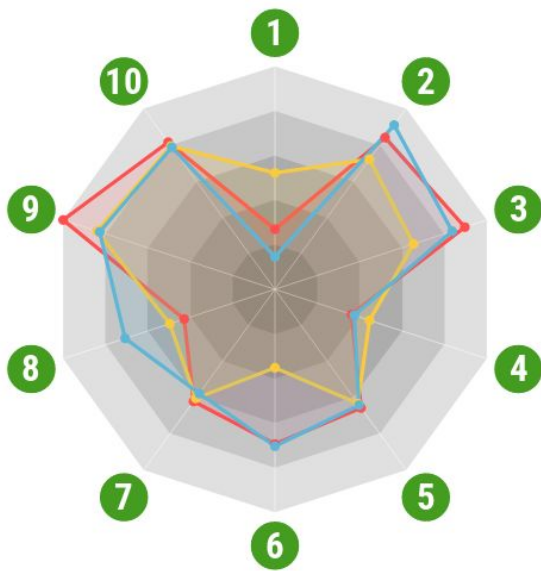
**RATING 66**  
 ELO 81  
 REAP 1.71  
 AGE 27 (1998)

### TIM REAM

**RATING 61**  
 ELO 79  
 REAP 1.63  
 AGE 38 (1987)

### M. YOSHIDA

**RATING 65**  
 ELO 77  
 REAP 1.61  
 AGE 37 (1988)



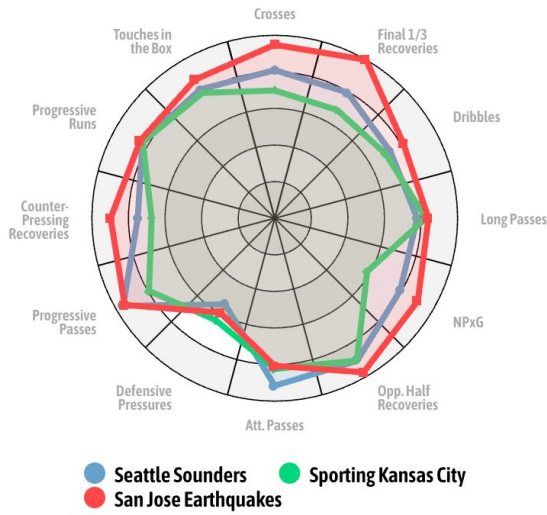
\*Stats per 90

	1	2	3	4	5	6	7	8	9	10
	Succ. Progressive Runs	Interceptions	Recoveries	Defensive Duels Won	% Defensive Duels Won	Aerial Duels Won	% Aerial Duels Won	Succ. Long Passes	Succ. Progressive Passes	% Succ. Progressive Passes
24/25	0.48	5.21	10.69	2.04	65.63	2.25	62	1.89	8.46	81.35
24/25	0.93	4.47	7.8	2.52	63.16	1.14	60.32	2.19	7.11	79.26
24/25	0.26	5.64	9.98	2.11	64.04	2.28	57.66	3.12	7	78.57

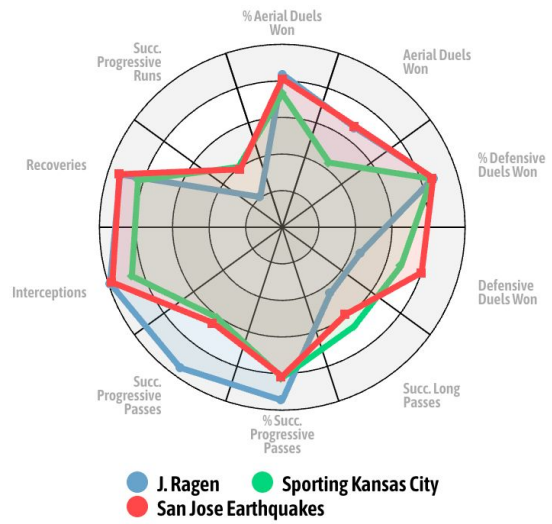
\* Ratings Averaged Regarding Chosen Metrics



## Teams Comparison



## Players Comparison



### J. RAGEN

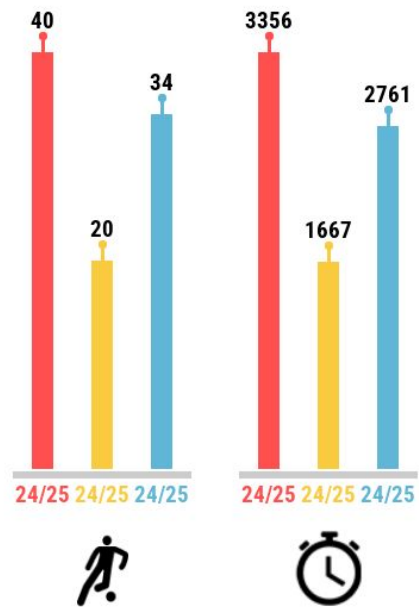
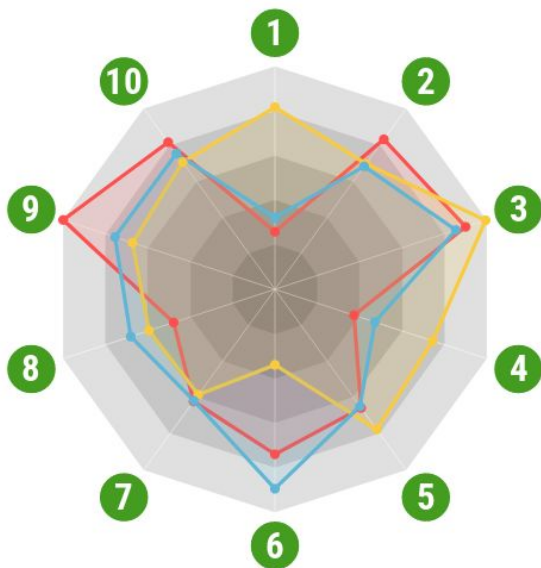
**RATING 67**  
 ELO 81  
 REAP 1.71  
 AGE 27 (1998)

### R. VOLODER

**RATING 69**  
 ELO 61  
 REAP 1.39  
 AGE 24 (2001)

### D. ROMNEY

**RATING 67**  
 ELO 72  
 REAP 1.44  
 AGE 32 (1993)



\*Stats per 90

	1	2	3	4	5	6	7	8	9	10
	Succ. Progressive Runs	Interceptions	Recoveries	Defensive Duels Won	% Defensive Duels Won	Aerial Duels Won	% Aerial Duels Won	Succ. Long Passes	Succ. Progressive Passes	% Succ. Progressive Passes
24/25	0.48	5.21	10.69	2.04	65.63	2.25	62	1.89	8.46	81.35
24/25	1.52	4.36	11.81	4.07	77.57	1.03	58.33	2.35	5.69	70.3
24/25	0.6	4.27	10.14	2.58	64.75	2.72	61.69	2.69	6.39	75.08

\* Ratings Averaged Regarding Chosen Metrics



# Centre-Backs Weighting

## MLS 2024-2025

KPIS WEIGHTING



Player	Team	Rating(1-5)	Succ. Progressive Runs	Interceptions	Recoveries	Defensive Duels Won	% Defensive Duels Won	Aerial Duels Won	% Aerial Duels Won	Succ. Long Passes	Succ. Progressive Passes	% Succ. Progressive Passes
Rodrigues		3.68	1.87	6.21	11.92	4.12	61.48	2.14	61.9	3.24	8.24	72.12
G. Campbell		3.63	0.73	5.96	14.72	5.35	70.4	1.52	53.19	3.95	7.48	71.51
O. Makhanya		3.61	1.75	5.51	12.44	3.93	70	2.48	65.79	3.23	4.79	65.91
Y. Gómez		3.56	0.53	5.04	12.07	4.14	69.39	2.97	70.87	2.48	8.53	70.23
T. Blackmon		3.49	1.11	5.49	10.76	2.15	73.17	1.79	65.79	3.52	7.46	77.32
R. Voloder		3.47	1.59	4.43	12.03	4.05	78.72	1.09	57.14	2.19	5.85	72.79
Y. Cheberko		3.46	2.02	4.35	11.06	4.42	68.65	1.08	41.33	1.81	8.04	81.05
Aaron Long		3.44	0.51	3.4	10.51	3.27	71.83	2.43	71.7	2.56	8.39	83.97
Noah Eile		3.43	1.61	4.95	10.7	3.28	73.61	1.89	53.98	2.57	7.27	77.05
Miles Robinson		3.39	0.54	5.31	10.81	2.94	72.66	2.09	57.39	2.5	7.97	79.25
J. Ragen		3.34	0.44	5.04	10.81	2.35	69.57	2.28	63.92	2.02	8.75	80.68
Matt Miazga		3.32	0.16	5.88	11.45	2.6	71.01	2.49	72.31	3.29	4.72	67.94
O. Urhohide		3.31	0.44	5.4	11.48	5.64	73.78	2.62	65.25	1.29	2.55	63.03
D. Munie		3.29	1.25	5.32	11.13	4.11	71.33	2.14	58.24	2.02	4.64	63.89
E. Garcés		3.28	0.9	3.64	10.39	5.38	74.03	0.76	59.26	1.84	5.57	73.29
J. Glesnes		3.26	0.81	4.5	11.37	3.17	63.69	2.31	58.45	3.03	6.12	72.37
Jack Elliott		3.25	0.75	5.28	9.9	2.86	67.86	2.96	61.14	3.32	5.33	66.88
N. Hagglund		3.22	0.53	6.26	10.71	2.34	58.82	2.93	55.56	2.52	6.44	74.32
A. Hack		3.22	1.53	4.97	13.71	3.55	64.36	3.22	62.77	7.26	12.94	80.34
S. Gregersen		3.22	1.71	4.16	9.92	3.92	63.37	1.47	55.81	2.39	5.14	72.41

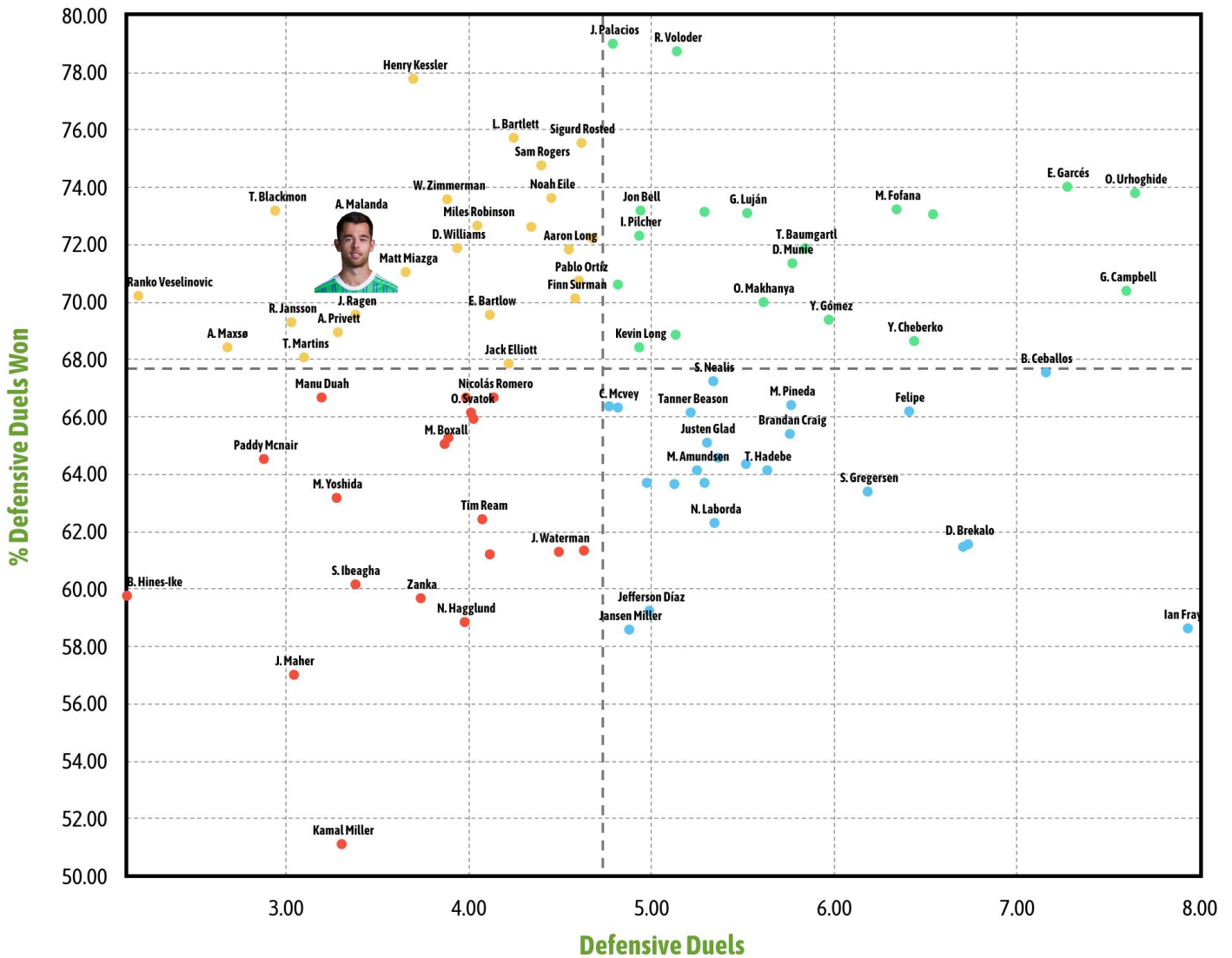


## DEFENSIVE DUELS

### DEFENSIVE DUELS VS % DEFENSIVE DUELS WON

Competitions: MLS, 2024/2025 Season.

\* Centre-Back with + 1400 minutes played. Per 90 minutes stats, as long as they are greater than 0



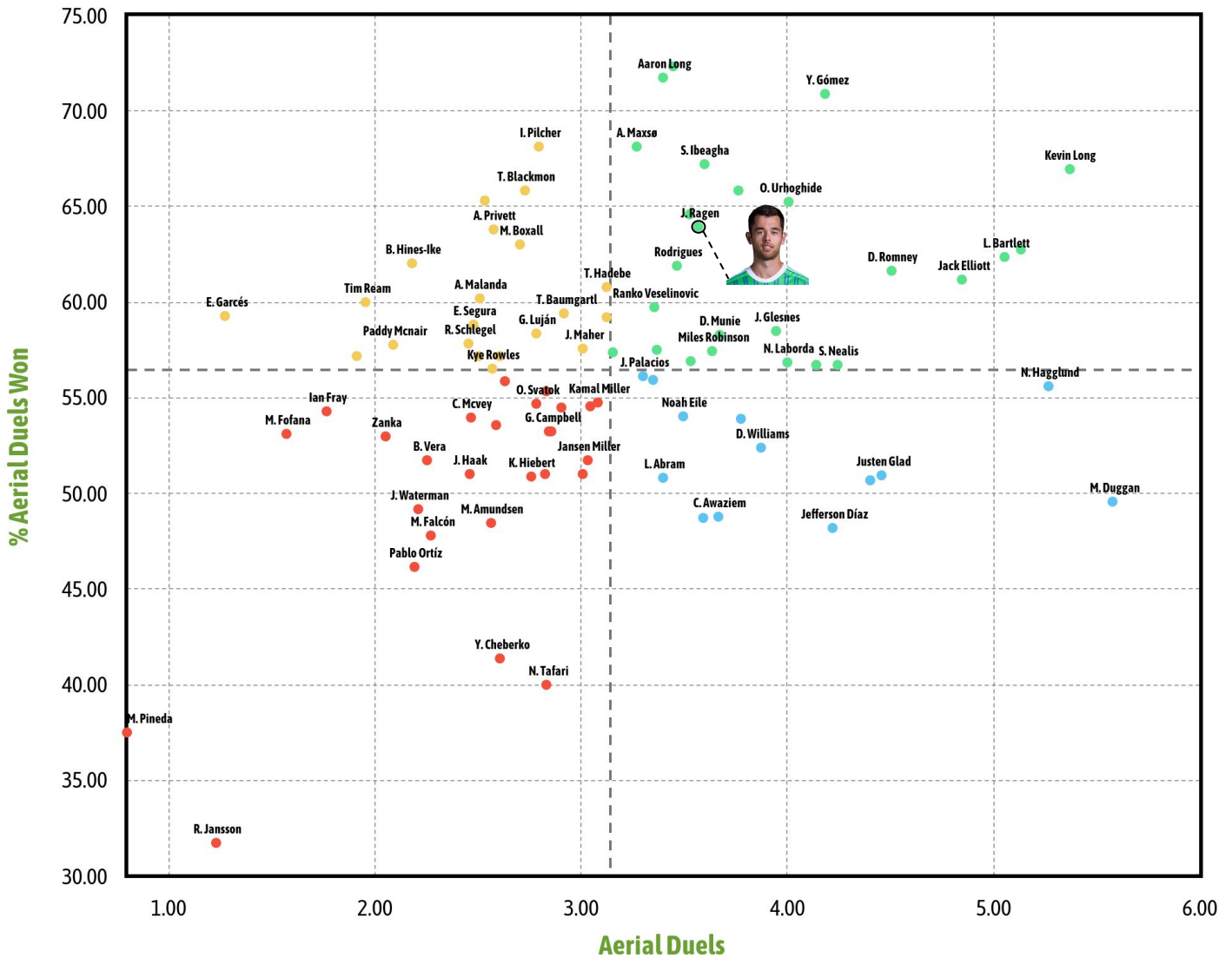


## AERIAL DOMINANCE

### AERIAL DUELS VS % AERIAL DUELS WON

Competitions: MLS, 2024/2025 Season.

\* Centre-Back with + 1400 minutes played. Per 90 minutes stats, as long as they are greater than 0



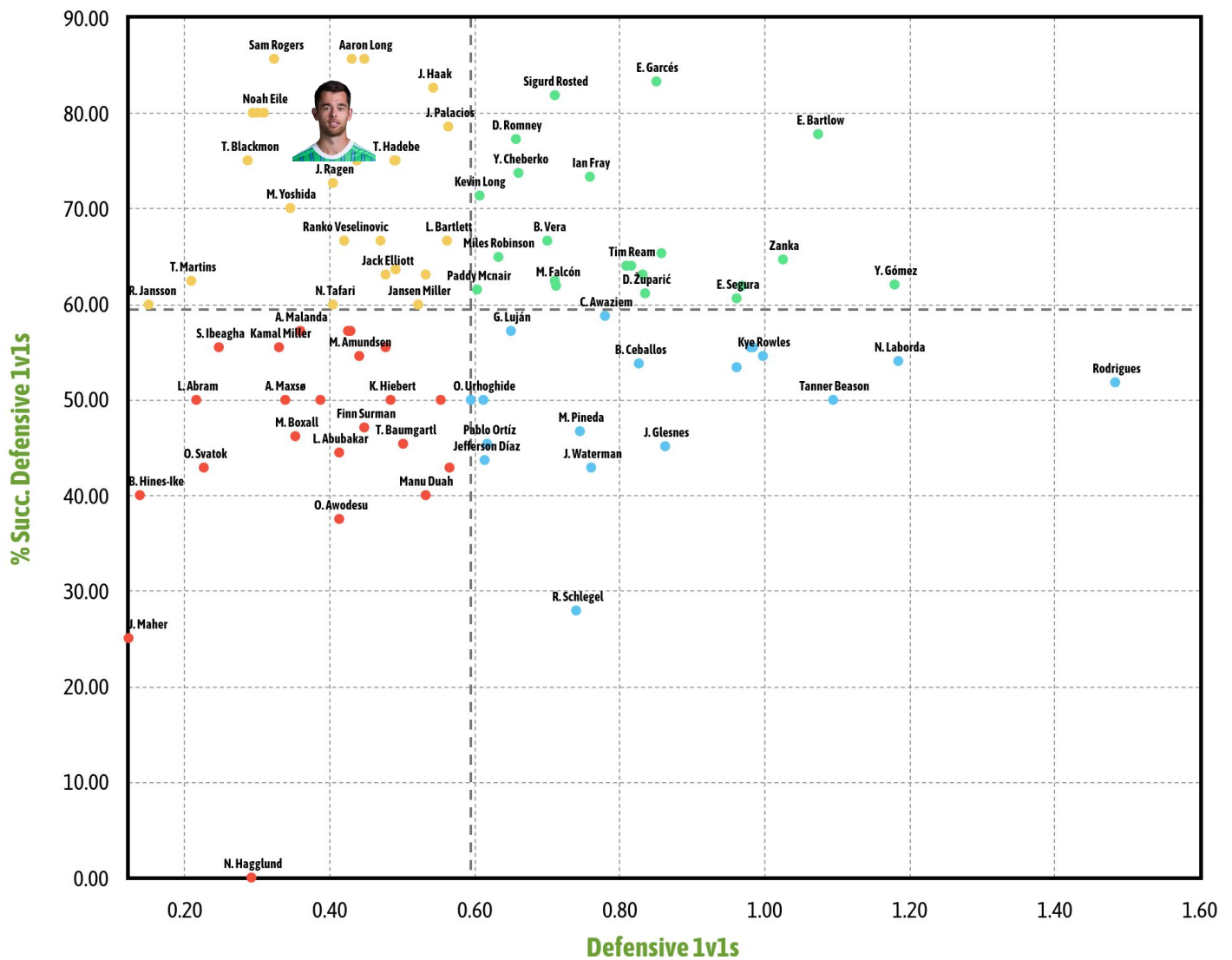


## DEFENSIVE 1vs1

### DEFENSIVE 1V1S VS % SUCC. DEFENSIVE 1V1S

Competitions: MLS, 2024/2025 Season.

\* Centre-Back with + 1400 minutes played. Per 90 minutes stats, as long as they are greater than 0



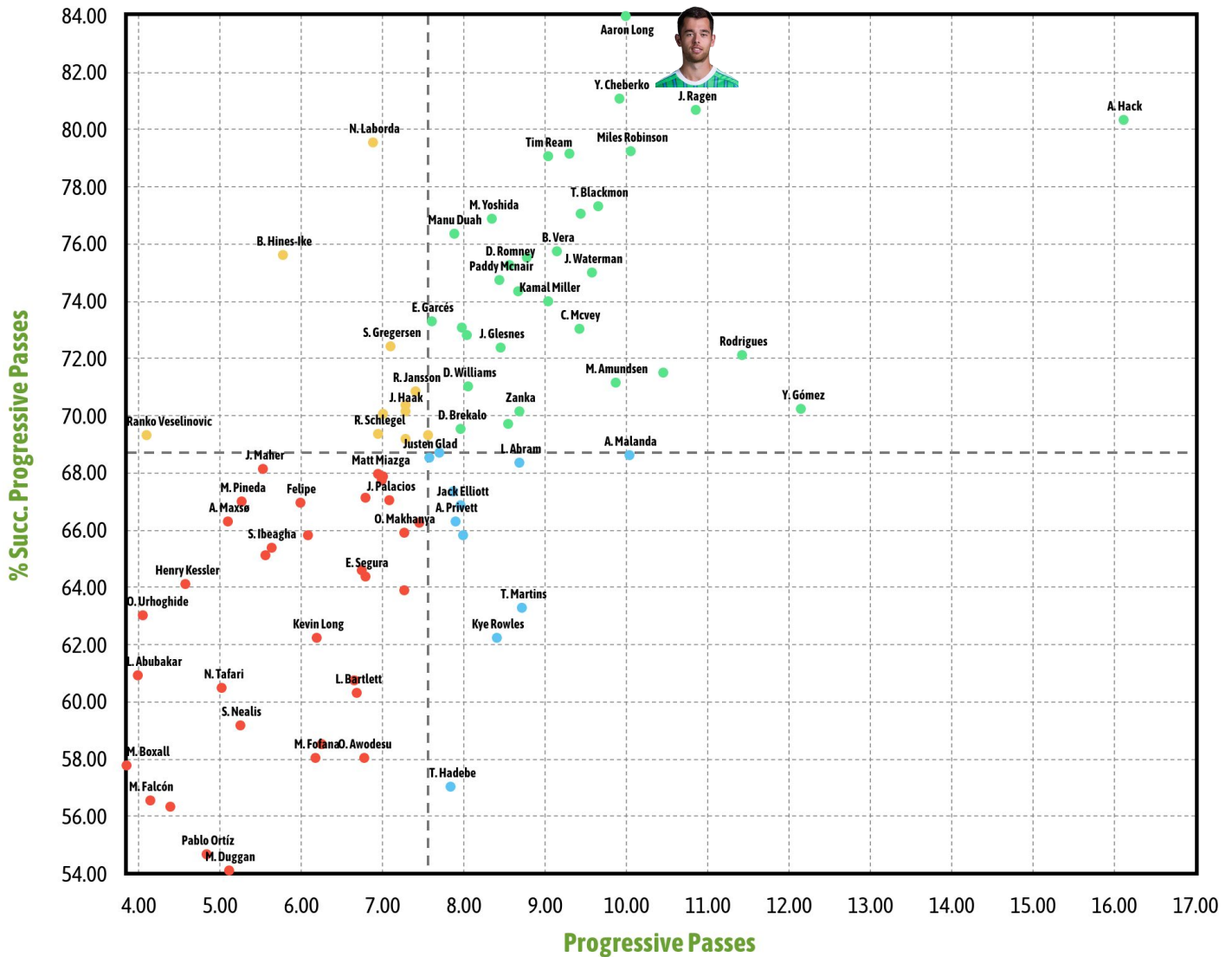


## PROGRESSIVE PASSING

### PROGRESSIVE PASSES VS % SUCC. PROGRESSIVE PASSES

Competitions: MLS, 2024/2025 Season.

\* Centre-Back with + 1400 minutes played. Per 90 minutes stats, as long as they are greater than 0



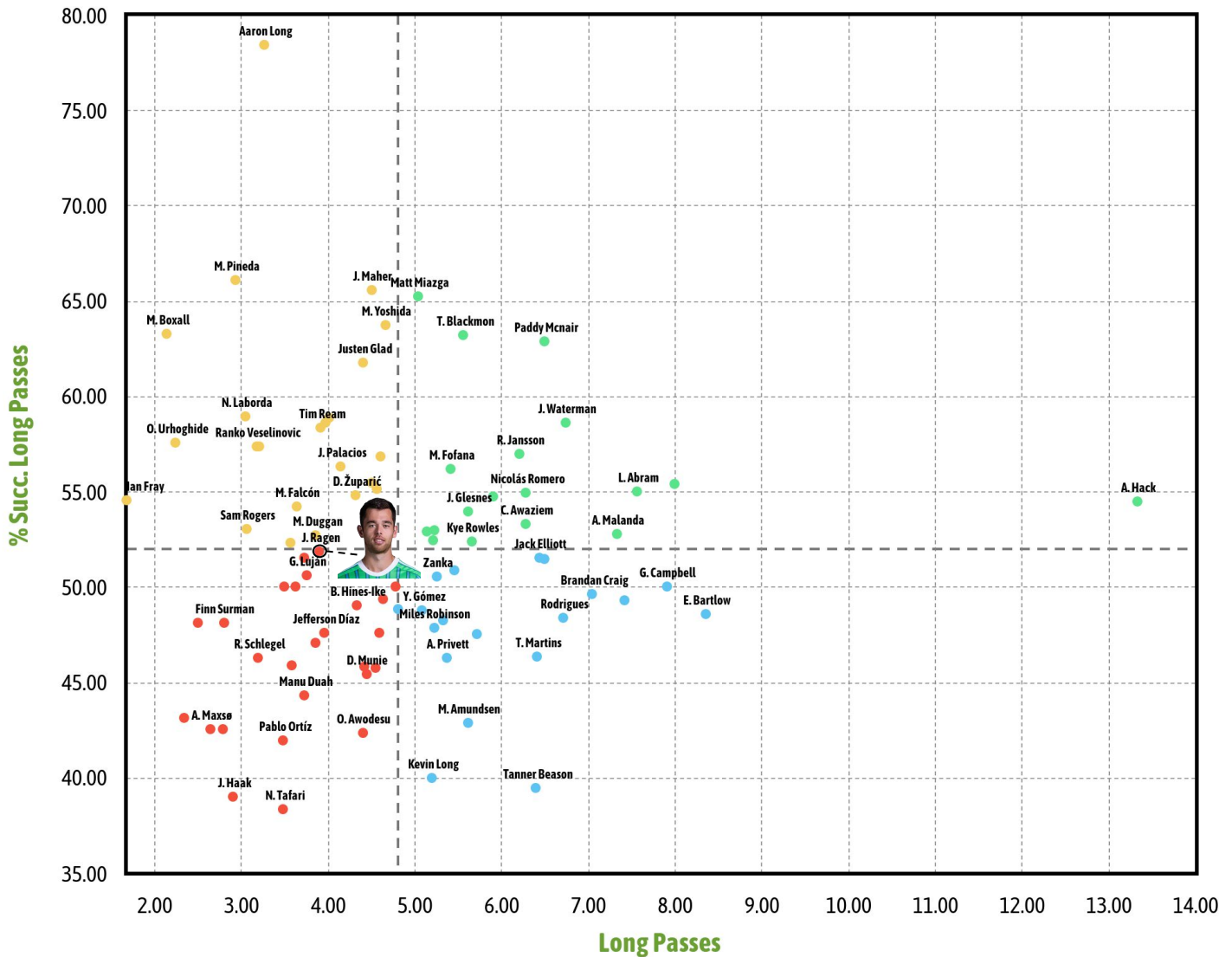


## LONG-RANGE PASSING

### LONG PASSES VS % SUCC. LONG PASSES

Competitions: MLS, 2024/2025 Season.

\* Centre-Back with + 1400 minutes played. Per 90 minutes stats, as long as they are greater than 0







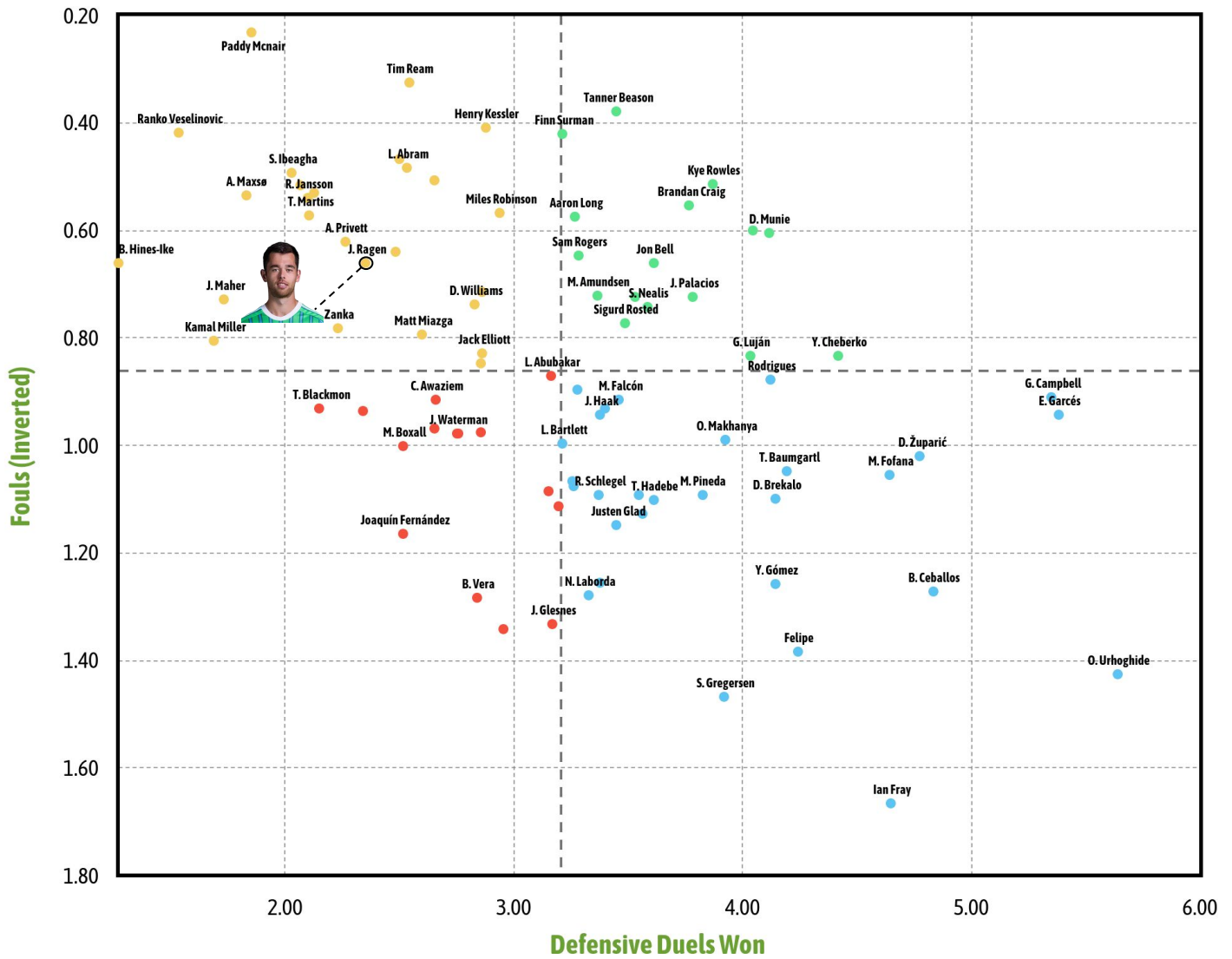


## DISCIPLINE

### DEFENSIVE DUELS WON VS FOULS

Competitions: MLS, 2024/2025 Season.

\* Centre-Back with + 1400 minutes played. Per 90 minutes stats, as long as they are greater than 0





<b>AGE RANGE</b>	<b>ELO</b>	<b>DESCRIPTION</b>
<b>&lt;=18 years</b>	<b>&gt;=80</b>	<b>Youth World Star</b>
	<b>60-79</b>	<b>Wonderkid</b>
	<b>40-59</b>	<b>Great Prospect</b>
	<b>&gt;40</b>	<b>Yet to Discover</b>
<b>19-24 years</b>	<b>&gt;=80</b>	<b>Youth World Star</b>
	<b>70 - 79</b>	<b>Young Top Player</b>
	<b>65 - 69</b>	<b>1st Level Young Player</b>
	<b>50 - 64</b>	<b>2nd Level Young Player</b>
	<b>40 - 49</b>	<b>3rd Level Young Player</b>
	<b>&lt;40</b>	<b>Little Relevance Young Player</b>
<b>&gt;24 years</b>	<b>&gt;=90</b>	<b>World Star</b>
	<b>80 - 89</b>	<b>Top Player</b>
	<b>75 - 79</b>	<b>1st Level Player</b>
	<b>65 - 74</b>	<b>2nd Level Player</b>
	<b>45 - 64</b>	<b>3rd Level Player</b>
	<b>&lt;45</b>	<b>Little Relevance Player</b>



## **ELO**

What is the ELO?

It is the value that determines the level of a player. It is calculated taking into account diverse variables: match difficulty, opponents, competitions, impact in high pressure moments, goals and decisive assists, states of form...

## **REAP**

What is the REAP?

It is a value that compares the performance of the player with others like him/her (players of similar age, position and leagues). We thus find out the profiles that are above average than what is expected of a determined player at a specific age.

## **Market Value**

What is the Market Value?

It is a mechanism that determines the value of a player in financial terms but after combining relative factors to sporting performance, transfer possibilities, good health/absence of injuries and business generation with sponsorship contracts.

## **Potential**

What is the Potential?

It is an estimation of the maximum ELO possible that a player can reach according to his/her particular performance in a precise moment of his/her career, and the years left that the player in question has ahead of him/her.



**FOOTBALL TURNED INTO STATS**  
the stats tool

