

SEAN DULIC



TWO-FOOTED FOOT
20 AGE
187 CMS



DFC
POS

LEOPOLD WURM



DFC
POS

194 CMS
19 AGE
RIGHT FOOT



SEAN DULIC



Centre-Back
1860 München



Position
Centre-Back



Born in München, DE
05 June 2005



187 centimeters
82 kilograms



Preferred foot
Two-Footed



Agent
B360 Sports



Contract will expire on
30 June 2028

1ST LEVEL YOUNG PLAYER

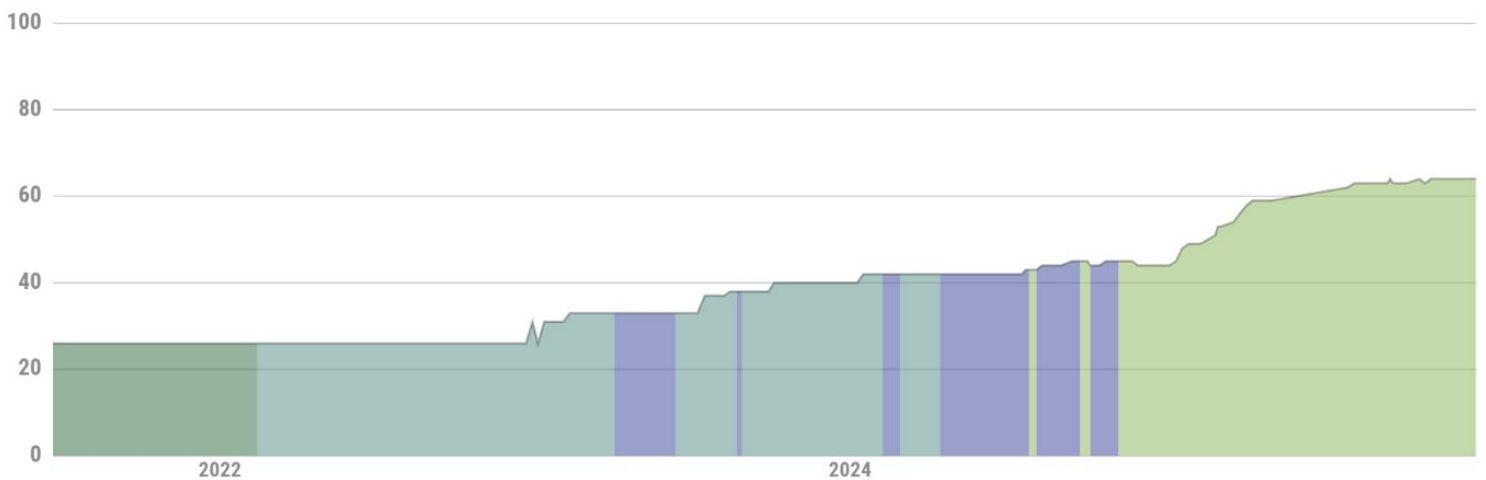


Stats 25/26 season



ELO Evolution

▲ 2 ▲ 10 ▲ 23 =
6 months ago 1 year ago 2 years ago Top. ELO



CENTRE-BACK SEAN DULIC

ELO



POT

REAP

+/- ELO

65

77

1.81

8



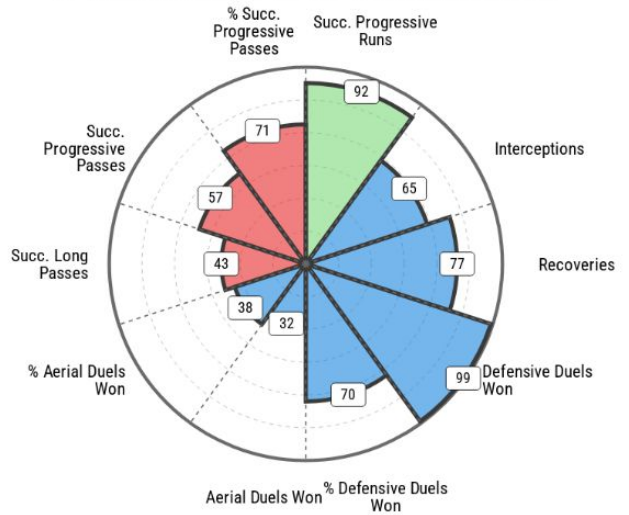
3. LIGA



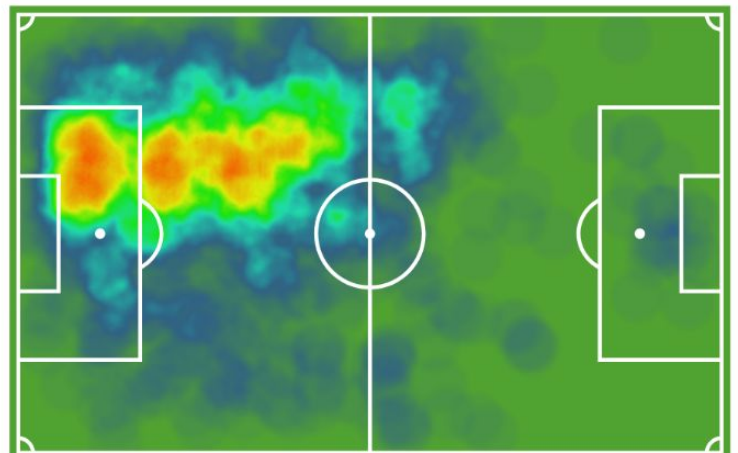
3. LIGA 25/26

MINUTES PLAYED	1710
CALLED UP	19
GAMES PLAYED	19
STARTS	19
YELLOW CARDS	1
GOALS	1

OVERALL PERFORMANCE



HEAT MAP



LONG PASSES



ATT. PASSES



PROGRESSIVE PASSES



PROGRESSIVE RUNS



AERIAL DUELS



DEFENSIVE DUELS



* PER 90 MINUTES STATS

** DONUT CHART LINKED TO % OF SUCCESS

CAREER ANALYSIS

PERFORMANCE EVOLUTION



SEAN DULIC



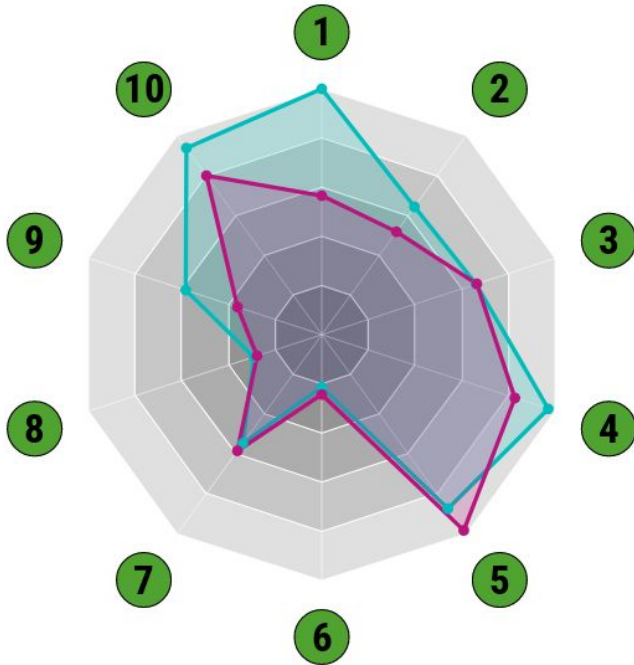
Centre-Back
1860 München

AGE
20

CMS
187

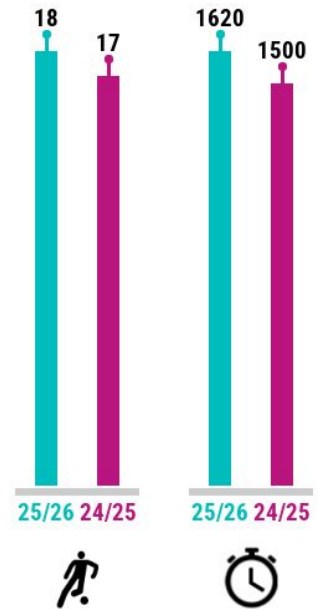
ELO
65

REAP
1.80



67
Rating

58
Rating



*Stats per 90

	1	2	3	4	5	6	7	8	9	10
25/26	1.61	4.41	10.64	5.57	70.25	1.25	39.68	1.86	5.17	73.05
24/25	0.91	3.55	10.69	4.75	79.05	1.43	42.37	1.77	3.2	62.22

CAREER

Seas.	Club	GP	S	⊕	Min.	Seas.	Club	GP	S	⊕	Min.
25/26	1860 München	19	19	1	1710	23/24	1860 München U19	26	26	2	2286
24/25	1860 München	20	18	0	1635	22/23	1860 München U19	14	9	2	838
	1860 München II	14	14	2	1260	21/22	TSV 1860 München U17	6	3	1	253
23/24	1860 München II	5	3	0	247						

NATIONAL TEAM

Germany U20	6	4	0	407
-------------	---	---	---	-----

CONTEXTUAL COMPARISON RADAR CHART



SEAN DULIC



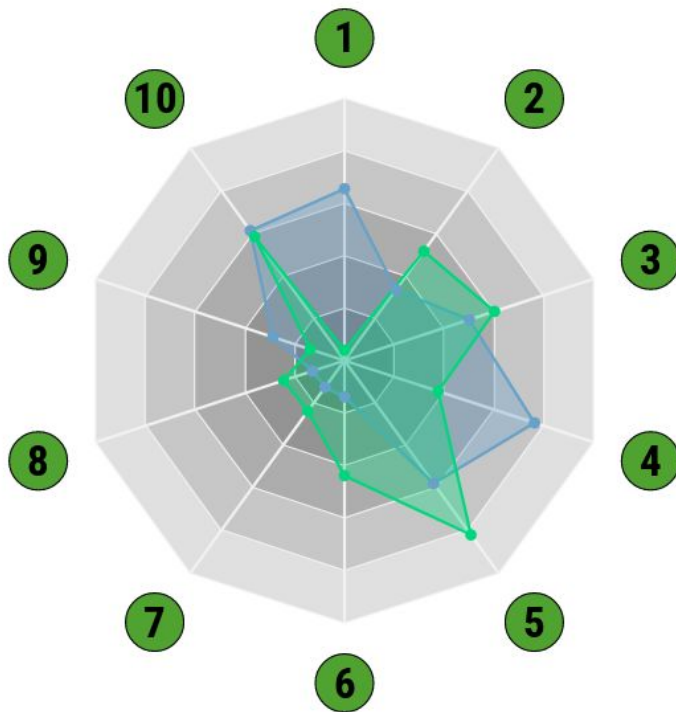
Centre-Back
1860 München

AGE
20

CMS
187

ELO
65

REAP
1.80



1	2	3	4	5	6	7	8	9	10
Succ. Progressive Runs	Interceptions	Recoveries	Defensive Duels Won	% Defensive Duels Won	Aerial Duels Won	% Aerial Duels Won	Succ. Long Passes	Succ. Progressive Passes	% Succ. Progressive Passes
1.57	4.32	10.73	5.46	69.7	1.19	38.46	1.85	5.22	71.43
0.28	5.17	11.67	3.97	74.89	2.43	43.05	2.44	4.04	70.62

Sean Dulic's 3. Liga Per 90' Stats
Compared to same position players in the TOP 5 in 3. Liga
Season player: 2025/2026 // Season sample: 2025/2026



LEOPOLD WURM



Centre-Back
Jahn Regensburg



Position
Centre-Back



Born in Regensburg, DE
21 March 2006



194 centimeters
76 kilograms



Preferred foot
Right



Agent
Sports360 GmbH



Contract will expire on
30 June 2026

1ST LEVEL YOUNG PLAYER

ELO
65

POT
79

REAP
1.92

€ MIL.
1.7

Stats 25/26 season

19

Games Played

1

Goals

2

Assists

1

Cards

1647

Minutes

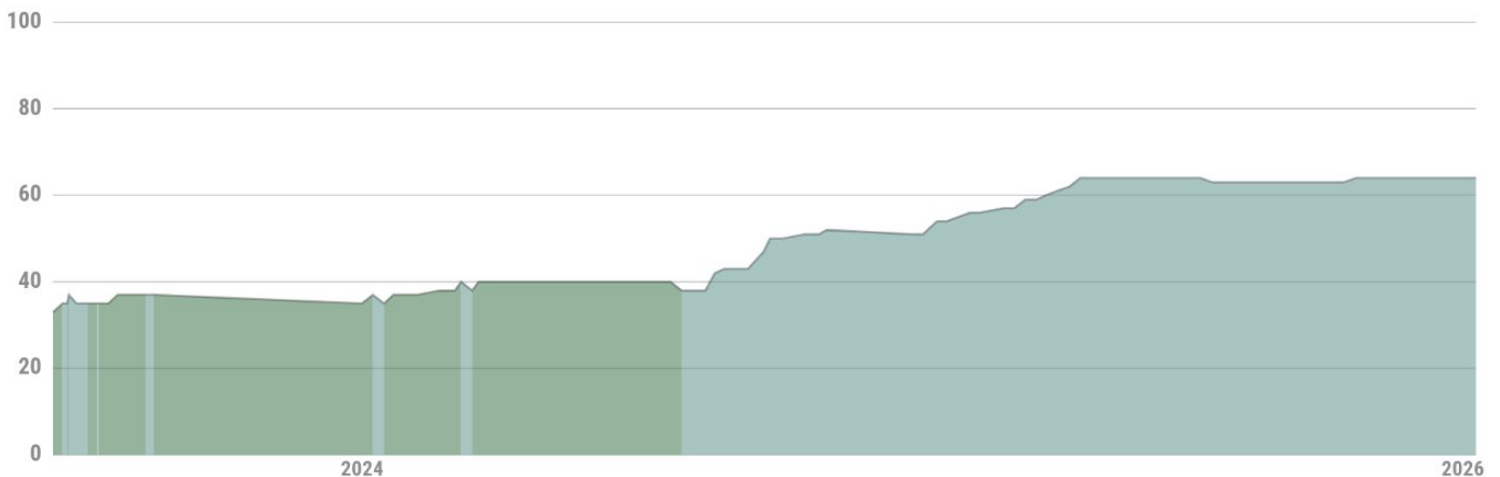
ELO Evolution

▲ 2
6 months ago

▲ 6
1 year ago

▲ 28
2 years ago

=
Top. ELO



CENTRE-BACK LEOPOLD WURM

ELO



POT

REAP

+/- ELO

65

79

1.92

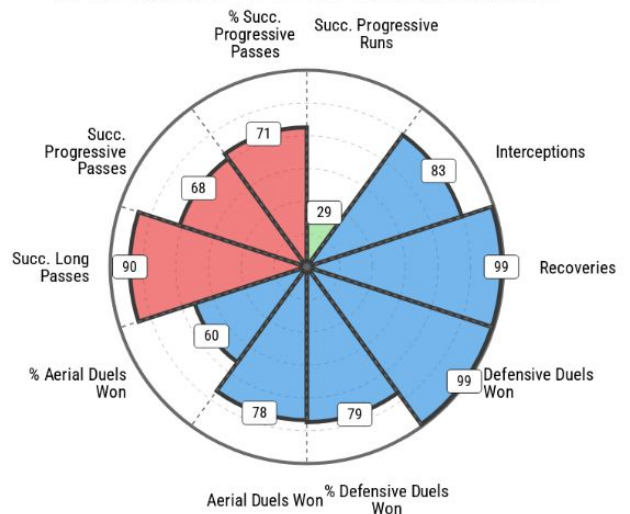
6



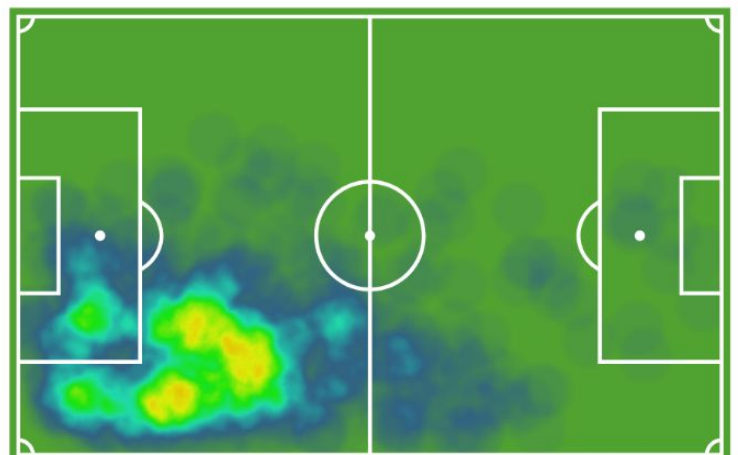
3. LIGA 25/26

MINUTES PLAYED	1557
CALLED UP	18
GAMES PLAYED	18
STARTS	18
YELLOW CARDS	1
GOALS	1

OVERALL PERFORMANCE



HEAT MAP



LONG PASSES



ATT. PASSES



PROGRESSIVE PASSES



PROGRESSIVE RUNS



AERIAL DUELS



DEFENSIVE DUELS



* PER 90 MINUTES STATS

** DONUT CHART LINKED TO % OF SUCCESS

CAREER ANALYSIS

PERFORMANCE EVOLUTION



LEOPOLD WURM

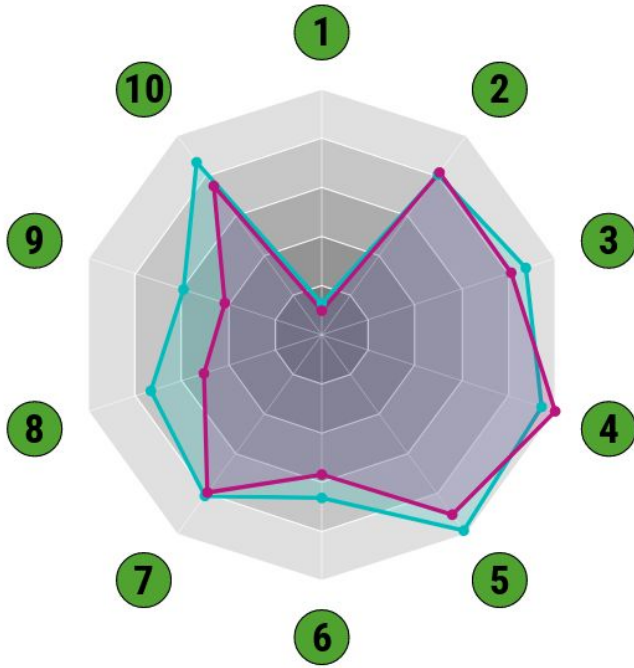
Centre-Back
Jahn Regensburg

AGE
19

CMS
194

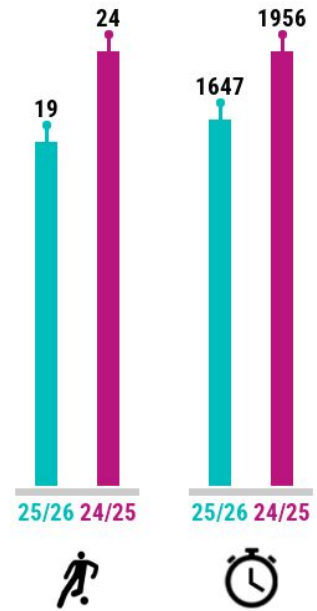
ELO
65

REAP
1.92



74
Rating

67
Rating



*Stats per 90

	1	2	3	4	5	6	7	8	9	10
Succ. Progressive Runs	0.47	5.31	13.37	6.03	78.38	2.86	59.14	3.8	6.09	71.34
Interceptions										
Recoveries										
Defensive Duels Won										
% Defensive Duels Won										
Aerial Duels Won										
% Aerial Duels Won										
Succ. Long Passes										
Succ. Progressive Passes										
% Succ. Progressive Passes										
25/26	0.47	5.31	13.37	6.03	78.38	2.86	59.14	3.8	6.09	71.34
24/25	0.36	5.38	12.41	6.4	72	2.45	57.89	2.62	4.27	61.54

CAREER

Seas.	Club	GP	S	⊕	Min.	Seas.	Club	GP	S	⊕	Min.
25/26	Jahn Regensburg	19	19	1	1647	23/24	Jahn Regensburg II	21	21	2	1821
24/25	Jahn Regensburg	24	22	1	1956		Jahn Regensburg	0	0	0	0
	Jahn Regensburg II	7	7	0	520	22/23	SSV Jahn Regensburg U17	15	15	3	1320

NATIONAL TEAM

Germany U20	6	2	0	203	Germany U18	2	2	0	122
Germany U19	5	4	2	401					

CONTEXTUAL COMPARISON RADAR CHART



LEOPOLD WURM



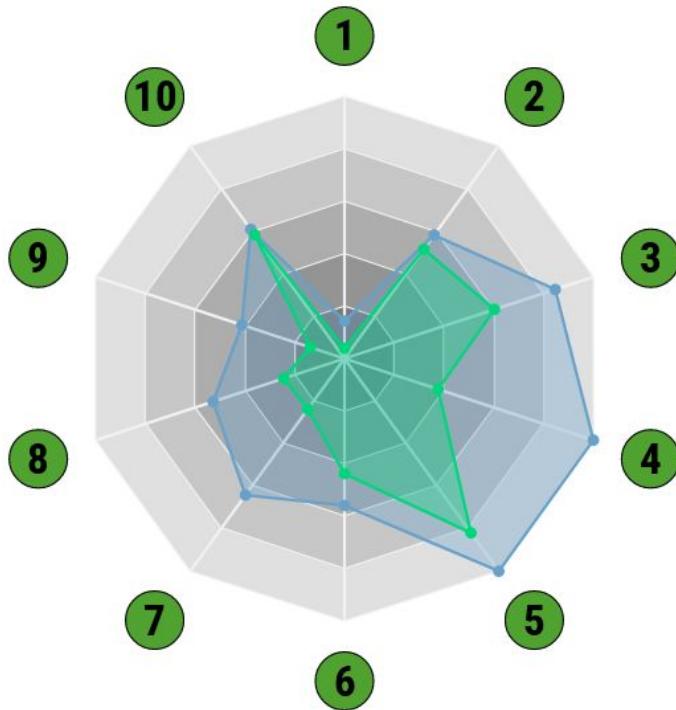
Centre-Back
Jahn Regensburg

AGE
19

CMS
194

ELO
65

REAP
1.92



Metric	Value	Contextual Value
1. Succ. Progressive Runs	0.5	0.28
2. Interceptions	5.48	5.17
3. Recoveries	13.95	11.67
4. Defensive Duels Won	6.37	3.97
5. % Defensive Duels Won	78.77	74.89
6. Aerial Duels Won	2.93	2.43
7. % Aerial Duels Won	59.55	43.05
8. Succ. Long Passes	3.87	2.44
9. Succ. Progressive Passes	6.2	4.04
10. % Succ. Progressive Passes	71.34	70.62

Leopold Wurm 's 3. Liga Per 90' Stats
Compared to same position players in the TOP 5 in 3. Liga
Season player: 2025/2026 // Season sample: 2025/2026

PERFORMANCE COMPARISON

PERCENTILE BAR CHART



SEAN DULIC

AGE **20** ELO **65** REAP **1.80**

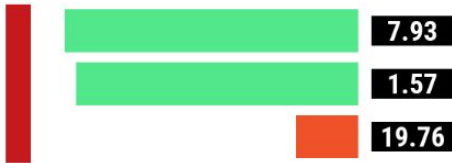


LEOPOLD WURM

AGE **19** ELO **65** REAP **1.92**

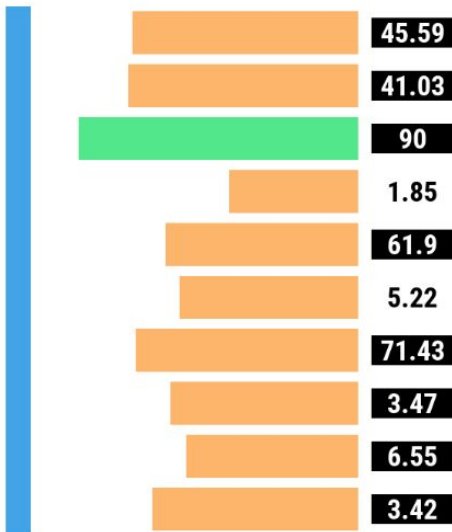


25/26 season



Progressive Runs
 Succ. Progressive Runs
 % Succ. Progressive Runs

3.12
 0.47
 15



Att. Passes
 Succ. Passes
 % Succ. Passes
 Succ. Long Passes
 % Succ. Long Passes
 Succ. Progressive Passes
 % Succ. Progressive Passes
 Succ. Passes to Final 1/3
 Dispossessed
 Dispossessed in Own Half

40.16
 34.49
 85.88
 3.8
 61.86
 6.09
 71.34
 2.71
 8.12
 3.85



Defensive Duels Won
 % Defensive Duels Won
 Aerial Duels Won
 % Aerial Duels Won
 Succ. Defensive 1v1s
 % Succ. Defensive 1v1s
 Shots Blocked (DEF)
 Interceptions
 Recoveries
 Tackles
 Clearances

6.03
 78.38
 2.86
 59.14
 0.99
 82.61
 0.83
 5.31
 13.37
 0.36
 2.29



100 50 0

0 50 100

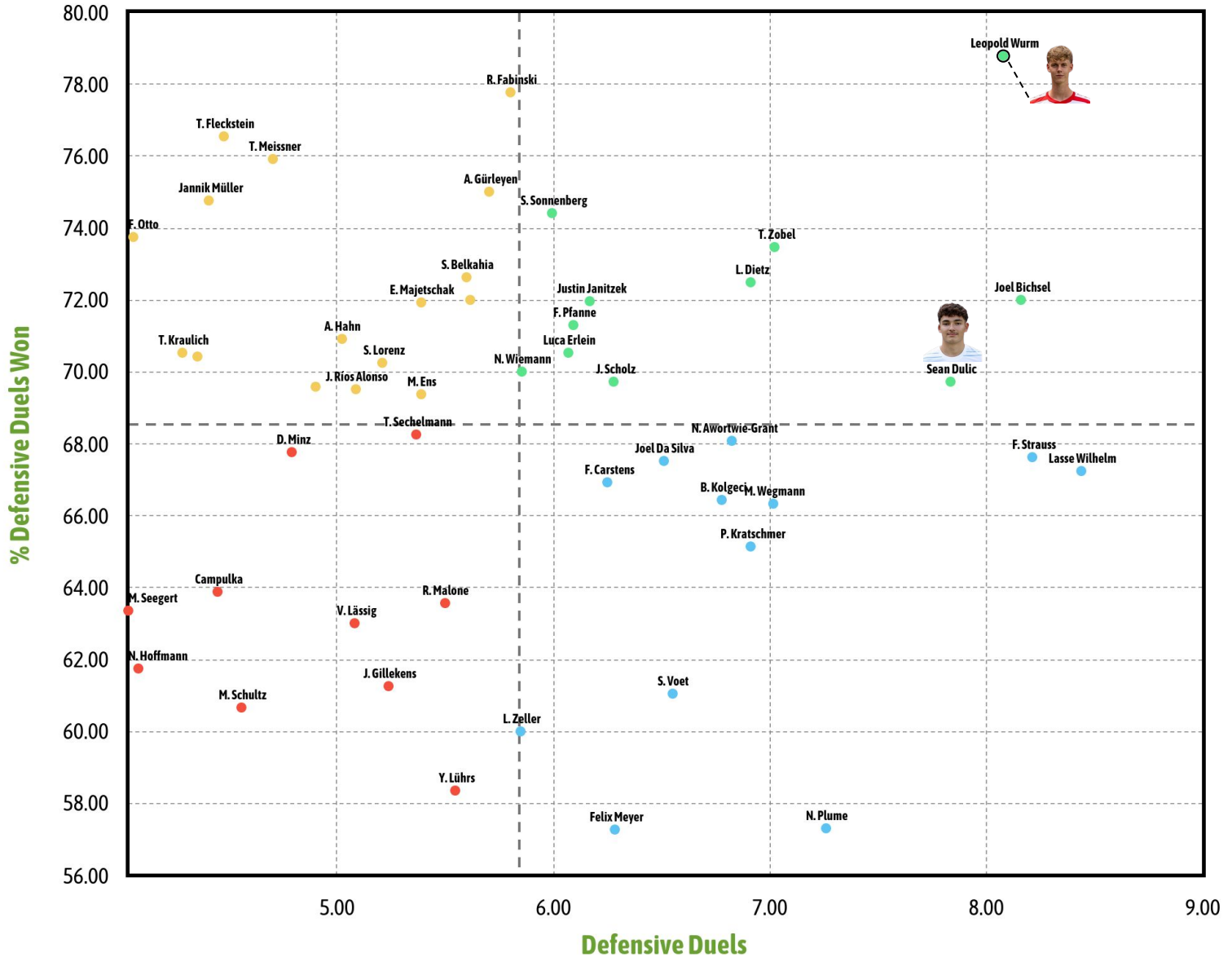


DEFENSIVE DUELS

DEFENSIVE DUELS VS % DEFENSIVE DUELS WON

Competitions: 3. Liga, 2025/2026 Season.

* Centre-Back with +1100 minutes played. Per 90 minutes stats, as long as they are greater than 0



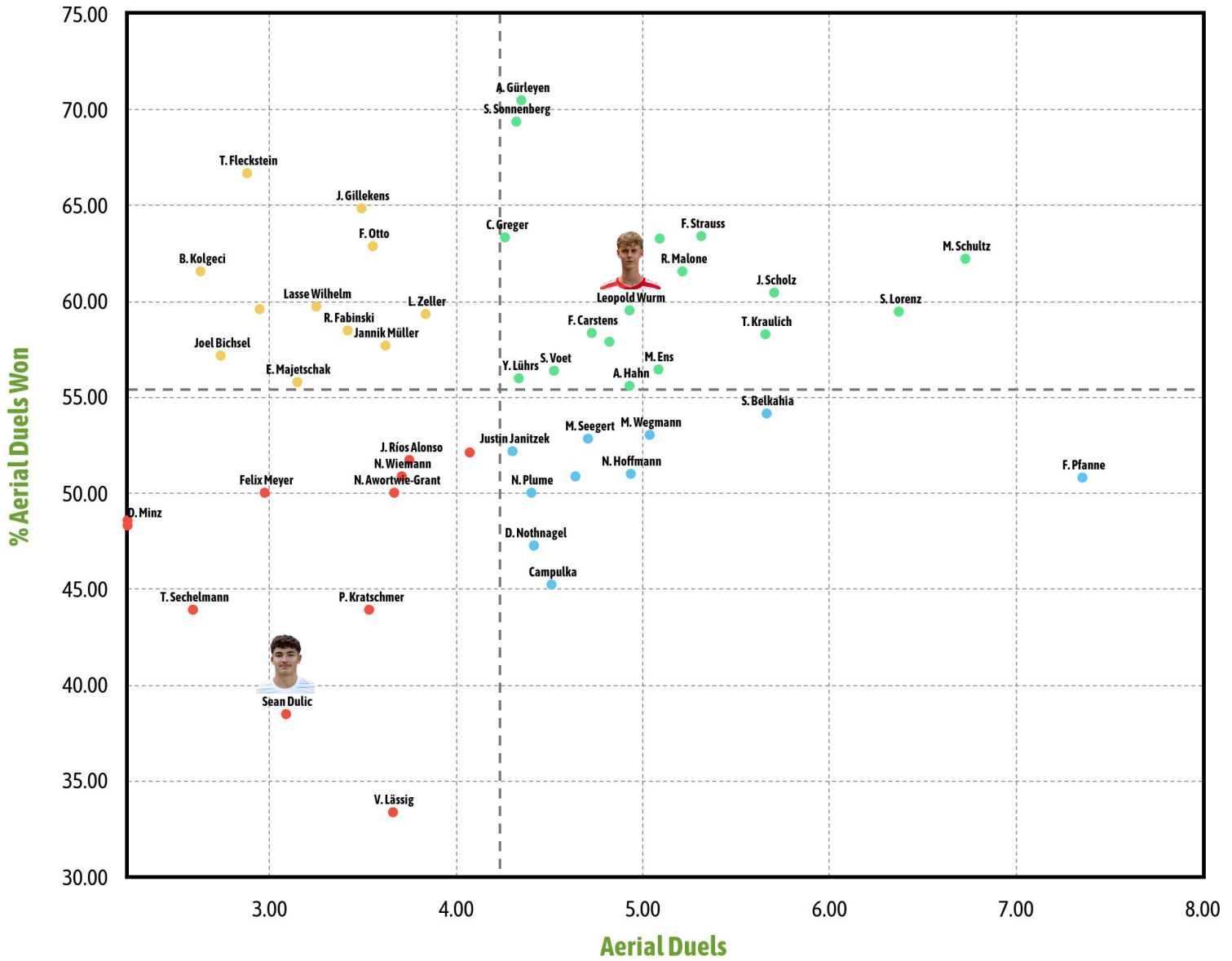


AERIAL DOMINANCE

AERIAL DUELS VS % AERIAL DUELS WON

Competitions: 3. Liga, 2025/2026 Season.

* Centre-Back with +1100 minutes played. Per 90 minutes stats, as long as they are greater than 0



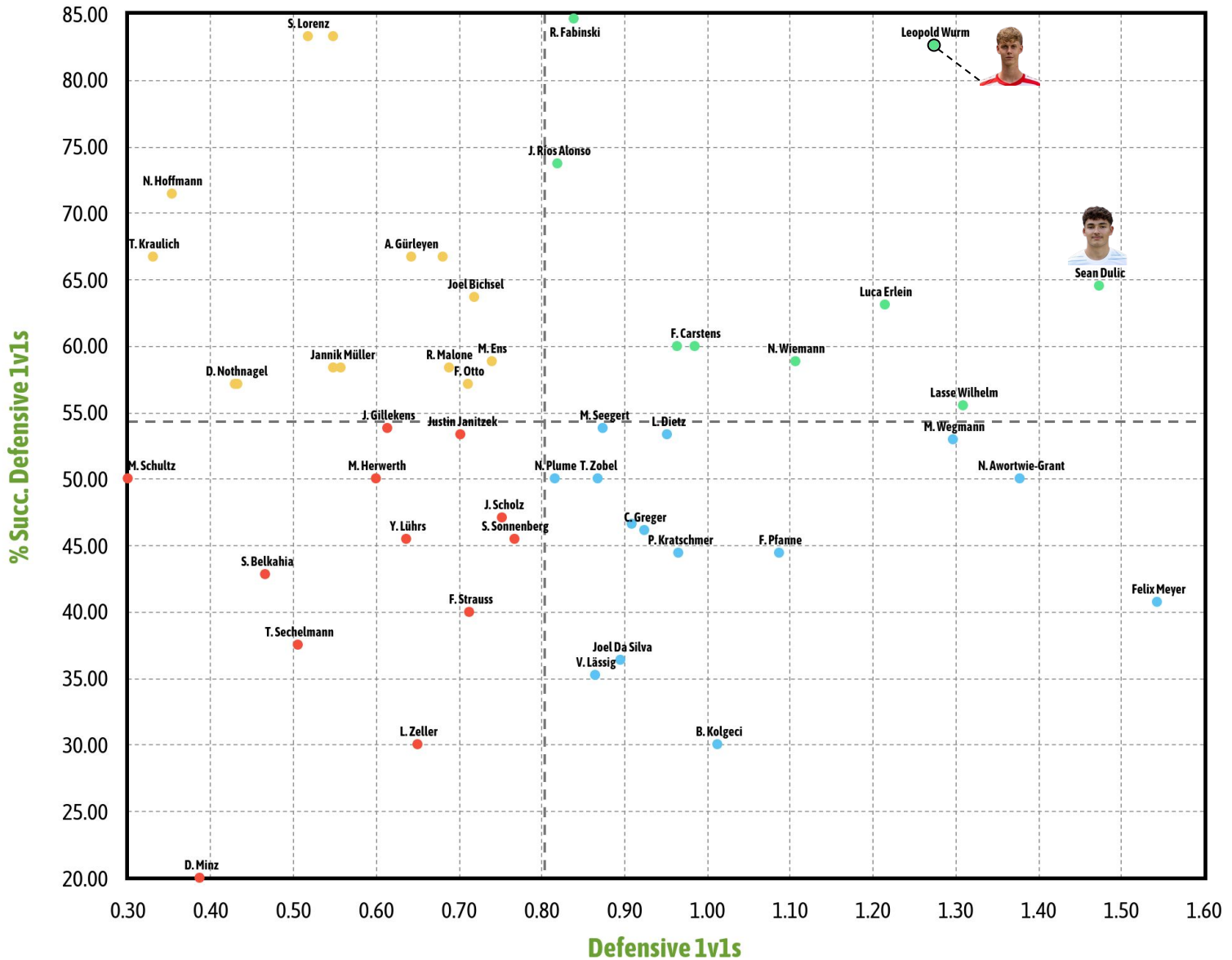


DEFENSIVE 1vs1

DEFENSIVE 1V1S VS % SUCC. DEFENSIVE 1V1S

Competitions: 3. Liga, 2025/2026 Season.

* Centre-Back with +1100 minutes played. Per 90 minutes stats, as long as they are greater than 0



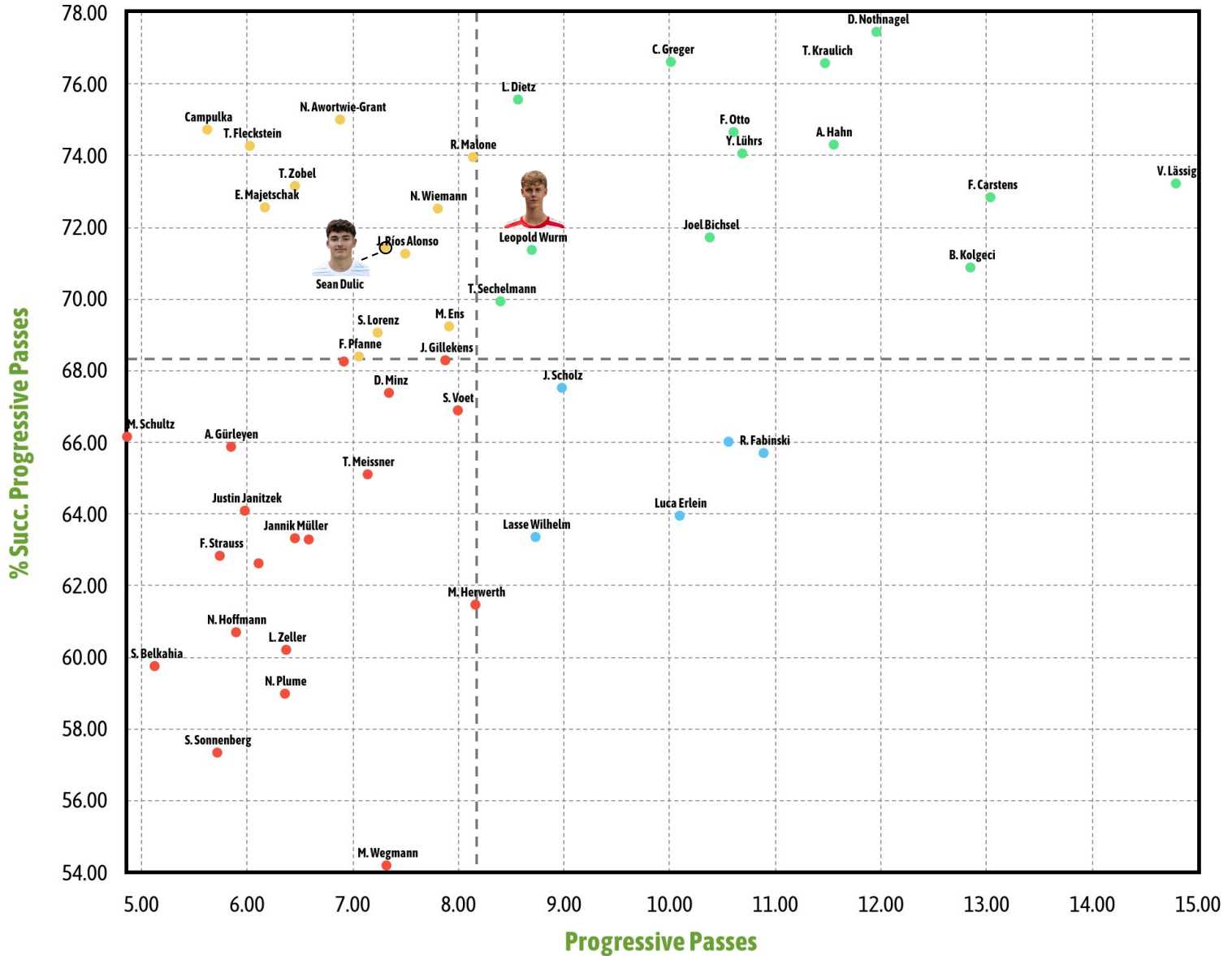


PROGRESSIVE PASSING

PROGRESSIVE PASSES VS % SUCC. PROGRESSIVE PASSES

Competitions: 3. Liga, 2025/2026 Season.

* Centre-Back with +1100 minutes played. Per 90 minutes stats, as long as they are greater than 0



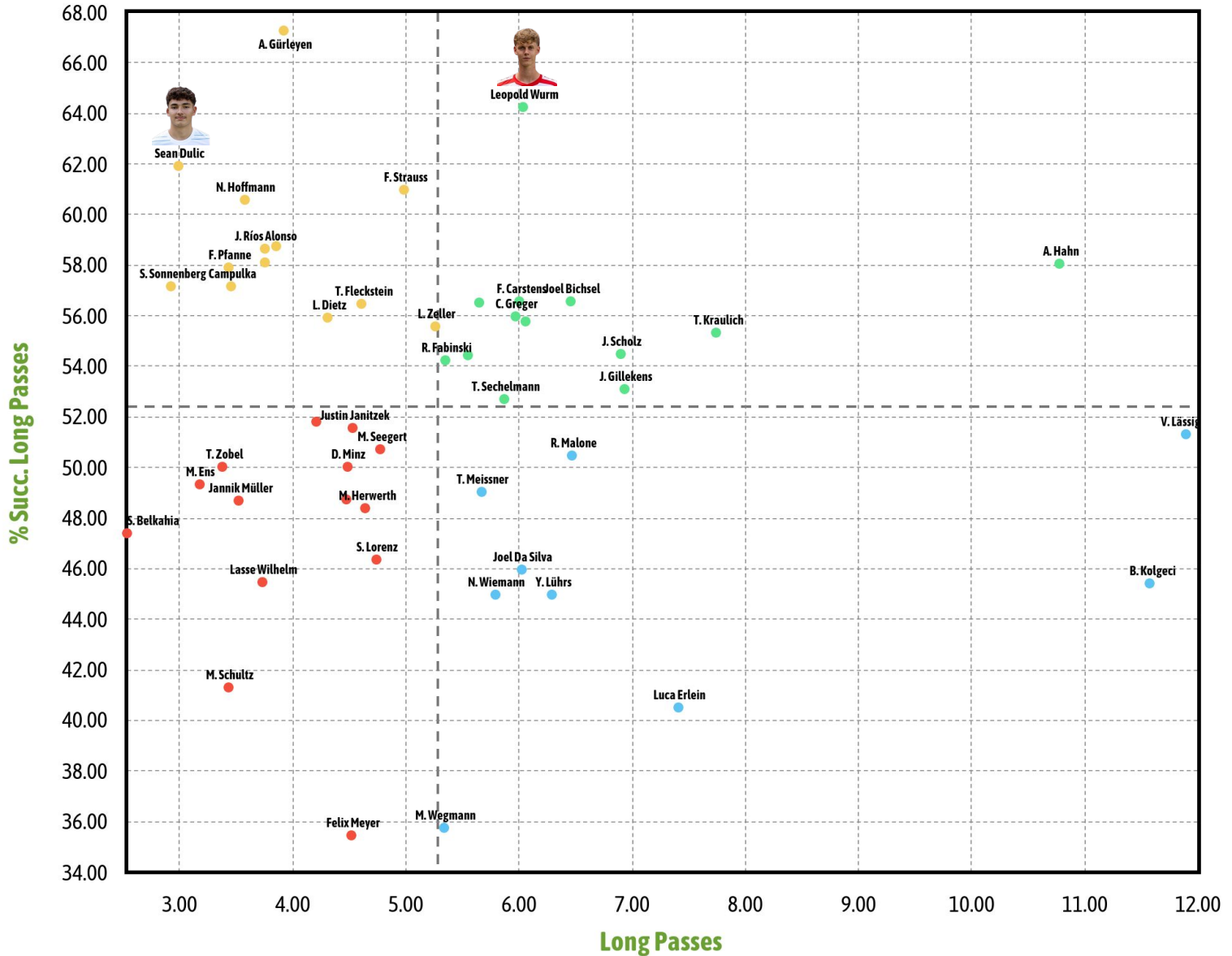


LONG-RANGE PASSING

LONG PASSES VS % SUCC. LONG PASSES

Competitions: 3. Liga, 2025/2026 Season.

* Centre-Back with +1100 minutes played. Per 90 minutes stats, as long as they are greater than 0



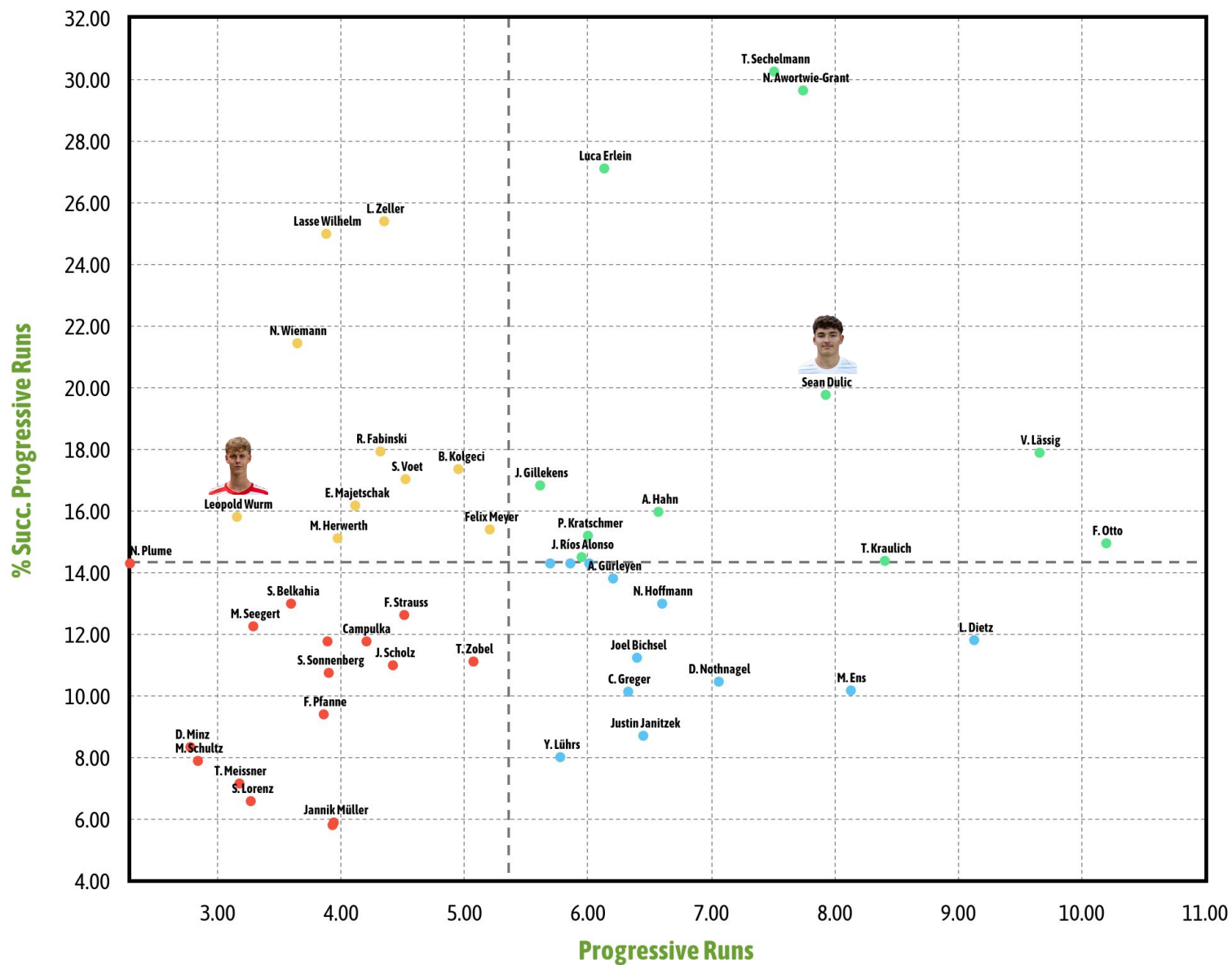


BALL CARRIES

PROGRESSIVE RUNS VS % SUCC. PROGRESSIVE RUNS

Competitions: 3. Liga, 2025/2026 Season.

* Centre-Back with +1100 minutes played. Per 90 minutes stats, as long as they are greater than 0



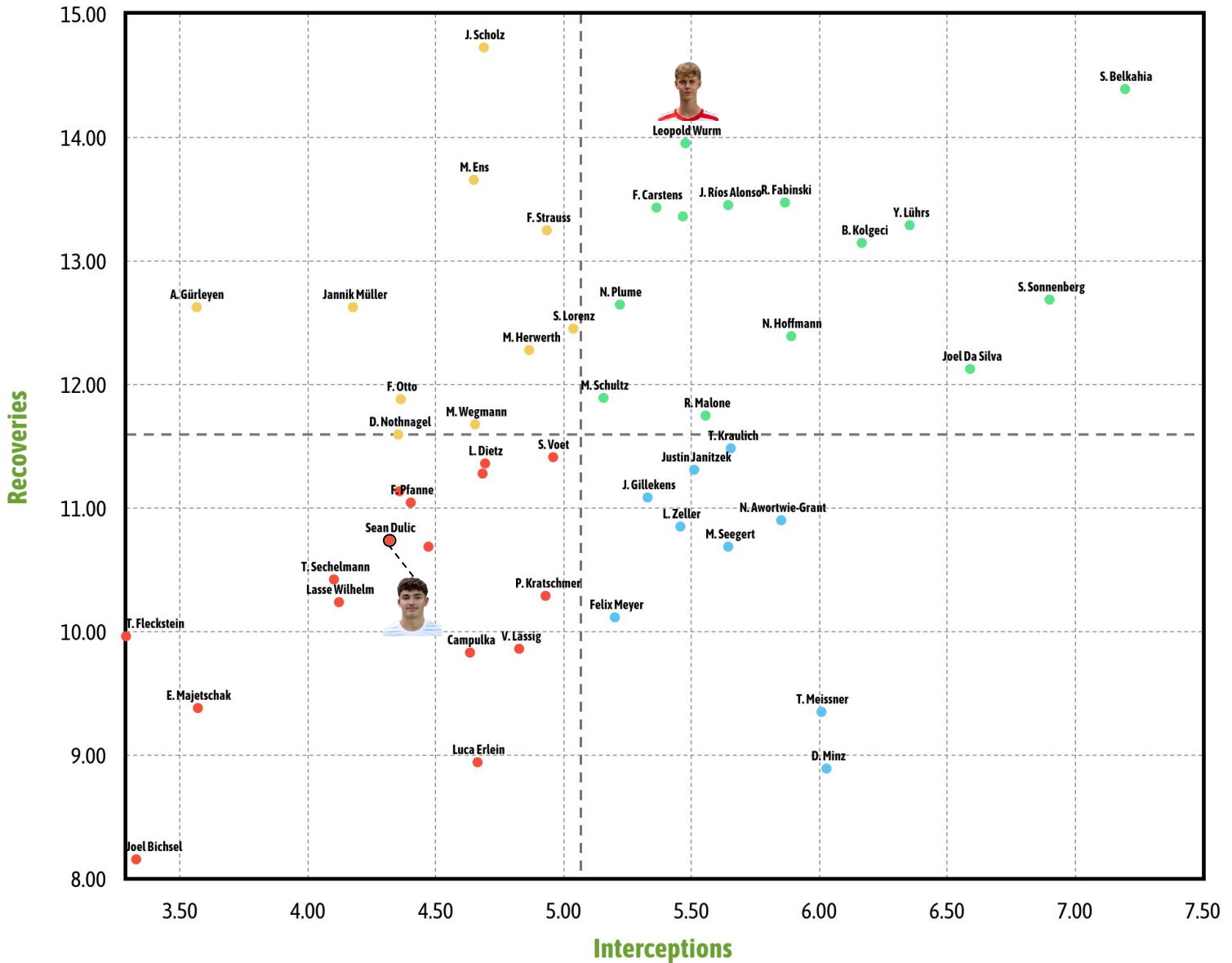


DEFENSIVE INTENSITY

INTERCEPTIONS VS RECOVERIES

Competitions: 3. Liga, 2025/2026 Season.

* Centre-Back with +1100 minutes played. Per 90 minutes stats, as long as they are greater than 0



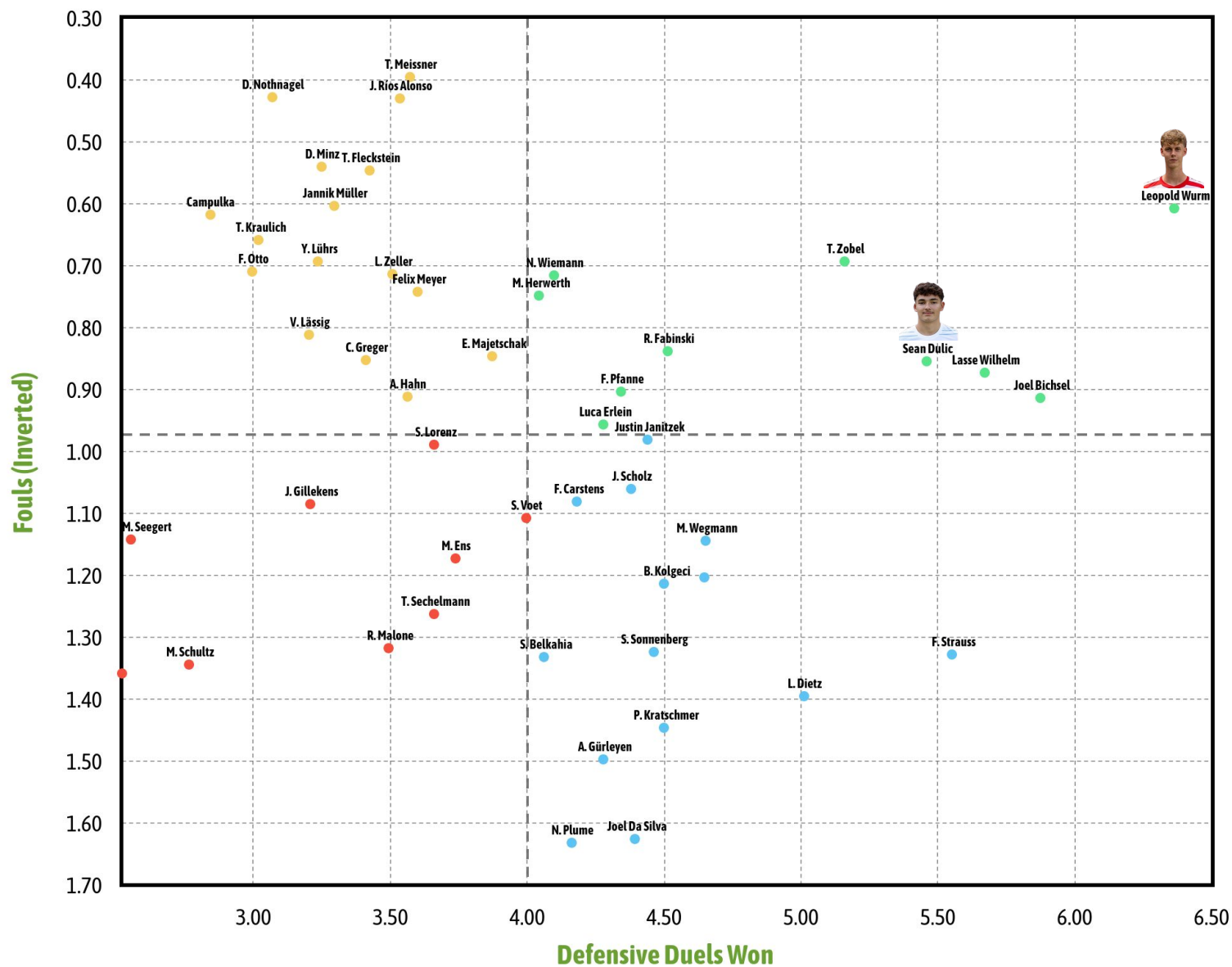


DISCIPLINE

DEFENSIVE DUELS WON VS FOULS

Competitions: 3. Liga, 2025/2026 Season.

* Centre-Back with +1100 minutes played. Per 90 minutes stats, as long as they are greater than 0



PERFORMANCE COMPARISON

ELO EVOLUTION



SEAN DULIC



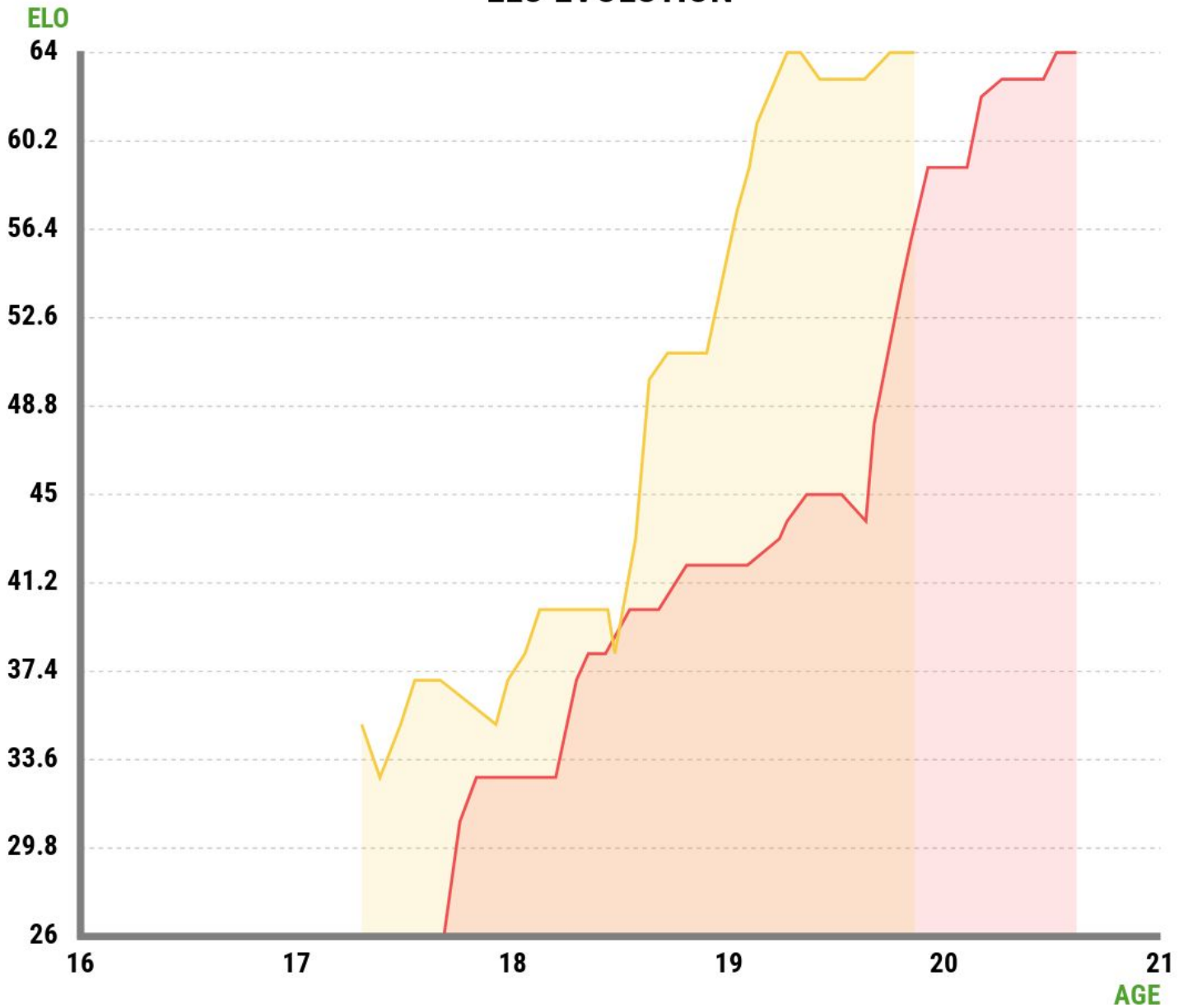
ELO 65
REAP 1.80
AGE 20 (2005)

LEOPOLD WURM



ELO 65
REAP 1.92
AGE 19 (2006)

ELO EVOLUTION



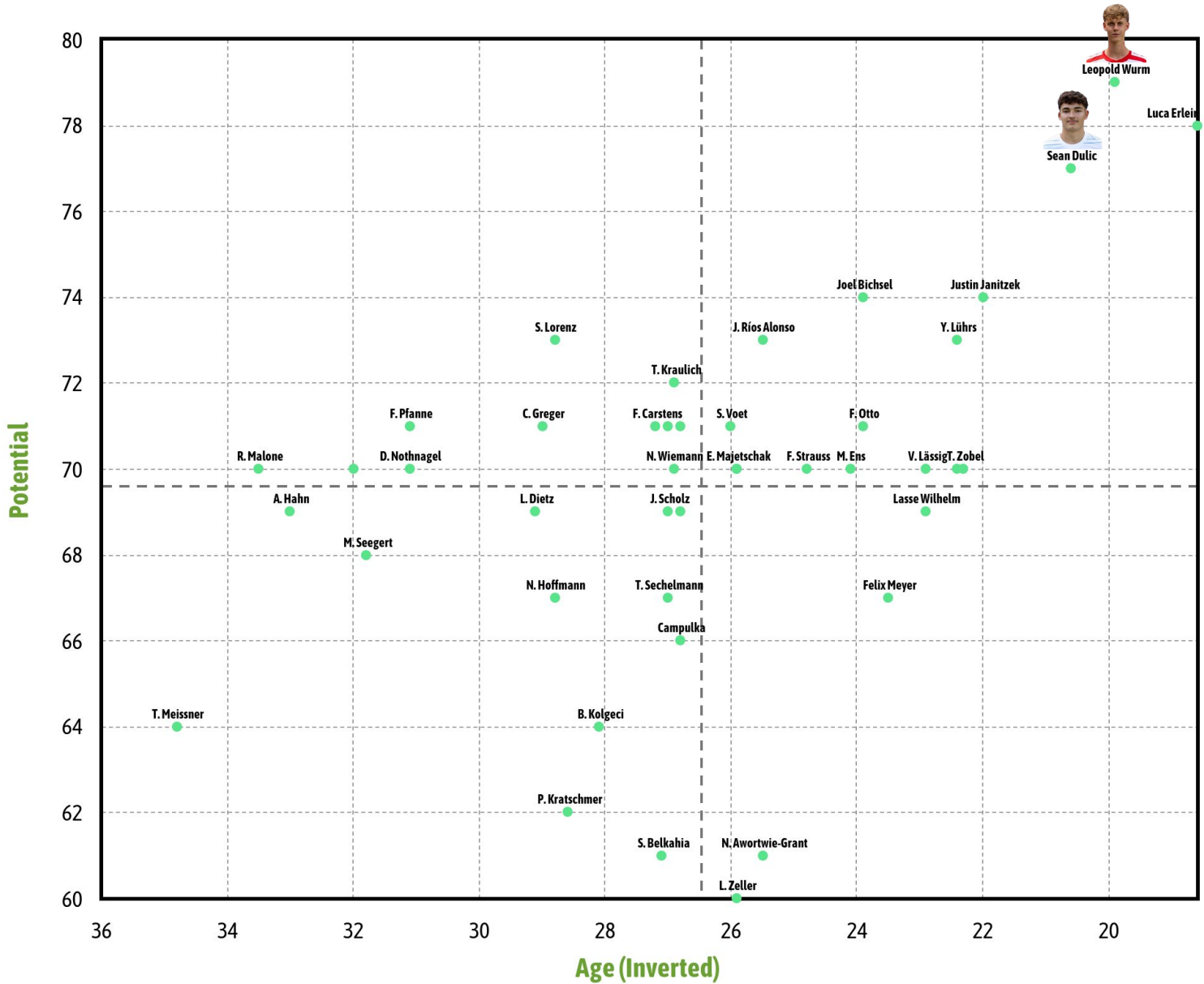


AGE vs POTENTIAL

AGE VS POTENTIAL

Competitions: 3. Liga, 2025/2026 Season.

* Centre-Back with +1100 minutes played. Per 90 minutes stats, as long as they are greater than 0



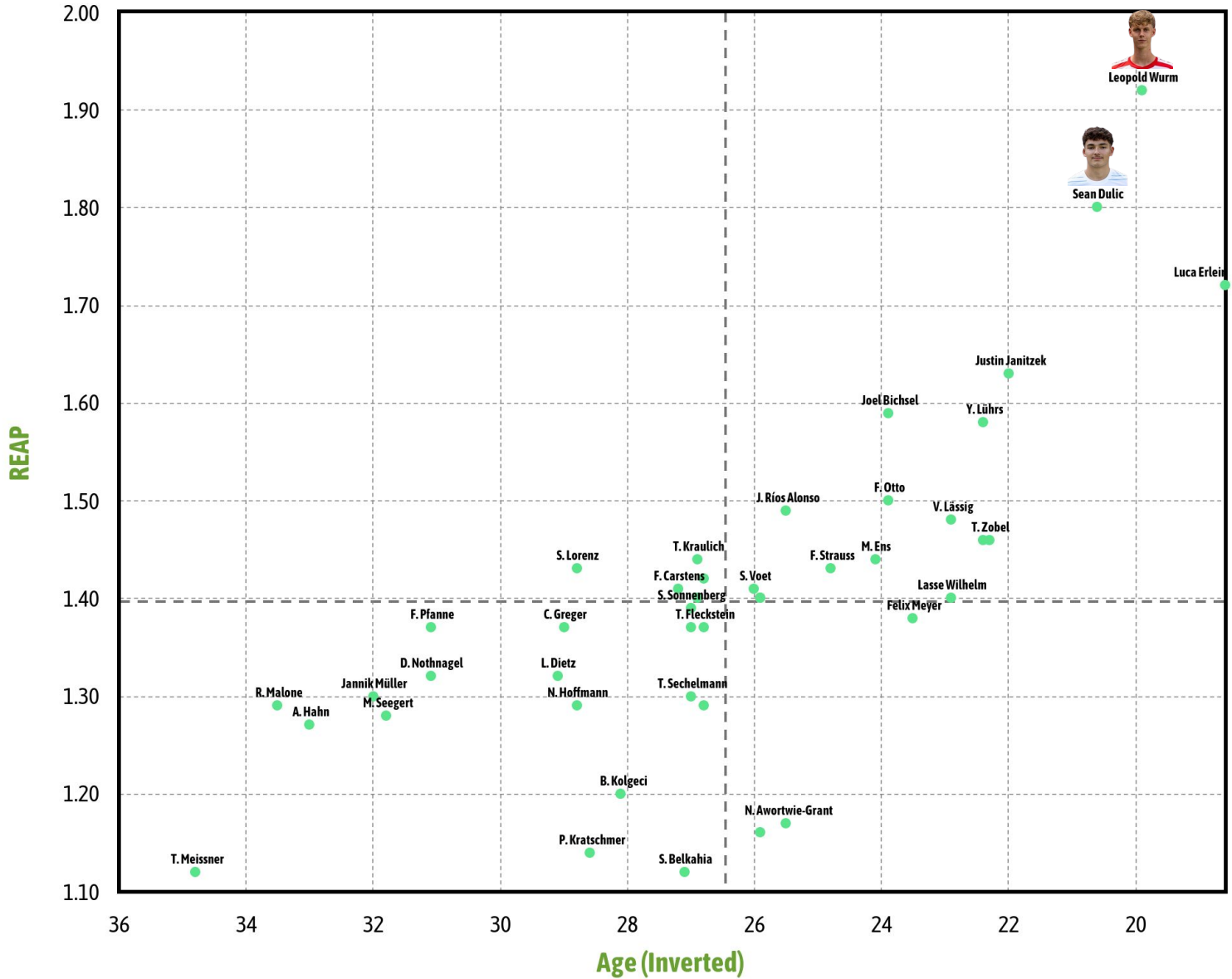


AGE vs REAP

AGE VS REAP

Competitions: 3. Liga, 2025/2026 Season.

* Centre-Back with +1100 minutes played. Per 90 minutes stats, as long as they are greater than 0





AGE RANGE	ELO	DESCRIPTION
<=18 years	>=80	Youth World Star
	60-79	Wonderkid
	40-59	Great Prospect
	>40	Yet to Discover
19-24 years	>=80	Youth World Star
	70 - 79	Young Top Player
	65 - 69	1st Level Young Player
	50 - 64	2nd Level Young Player
	40 - 49	3rd Level Young Player
	<40	Little Relevance Young Player
>24 years	>=90	World Star
	80 - 89	Top Player
	75 - 79	1st Level Player
	65 - 74	2nd Level Player
	45 - 64	3rd Level Player
	<45	Little Relevance Player



ELO

What is the ELO?
It is the value that determines the level of a player. It is calculated taking into account diverse variables: match difficulty, opponents, competitions, impact in high pressure moments, goals and decisive assists, states of form...

REAP

What is the REAP?
It is a value that compares the performance of the player with others like him/her (players of similar age, position and leagues). We thus find out the profiles that are above average than what is expected of a determined player at a specific age.

Market Value

What is the Market Value?
It is a mechanism that determines the value of a player in financial terms but after combining relative factors to sporting performance, transfer possibilities, good health/absence of injuries and business generation with sponsorship contracts.

Potential

What is the Potential?
It is an estimation of the maximum ELO possible that a player can reach according to his/her particular performance in a precise moment of his/her career, and the years left that the player in question has ahead of him/her.



FOOTBALL TURNED INTO STATS
the stats tool

